



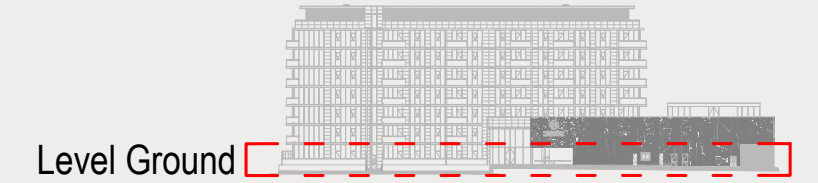
**MOHAMMED BIN RASHID  
AL MAKTOUM CITY**

**DISTRICT ONE**

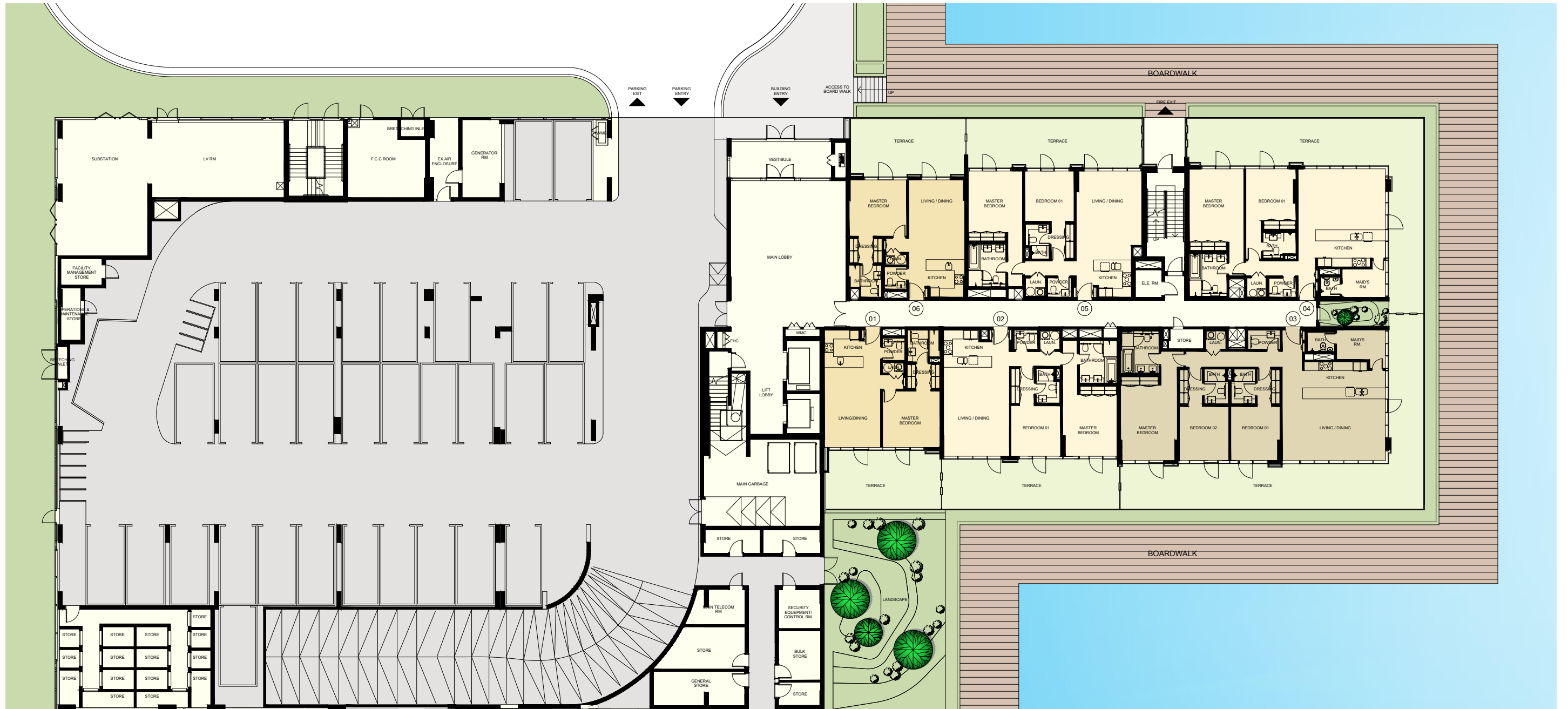
## G+6 Apartments

GROUND FLOOR

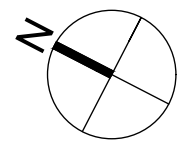
1, 2 and 3 Bedroom Apartments



Key Elevation



**DISCLAIMER:** All measurements, dimensions, coordinates and drawings given in the Property (Site/Floor) Plans are approximate and provided only for the purpose of illustration, information and general guidance as such drawings are not to scale. All the floor/site plans including concerned plot/room/swimming pool sizes, specifications, locations and orientations shown have been taken from concept designs prior to the actual development/construction and therefore their accuracy in relation to actual construction cannot be confirmed. Hence, we make no guarantee, warranty or representation as to the accuracy and completeness of the Property (Site/Floor) plan information as changes may be made during the development process, without notice. Always refer to latest IFC design available in the sales office for the most accurate representation of all construction details.





**MOHAMMED BIN RASHID  
AL MAKTOUM CITY**

**DISTRICT ONE**

## G+6 Apartments

FIRST FLOOR

1, 2 and 3 Bedroom Apartments

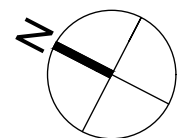
Level 01



Key Elevation



**DISCLAIMER:** All measurements, dimensions, coordinates and drawings given in the Property (Site/Floor) Plans are approximate and provided only for the purpose of illustration, information and general guidance as such drawings are not to scale. All the floor/site plans including concerned plot/room/swimming pool sizes, specifications, locations and orientations shown have been taken from concept designs prior to the actual development/construction and therefore their accuracy in relation to actual construction cannot be confirmed. Hence, we make no guarantee, warranty or representation as to the accuracy and completeness of the Property (Site/Floor) plan information as changes may be made during the development process, without notice. Always refer to latest IFC design available in the sales office for the most accurate representation of all construction details.





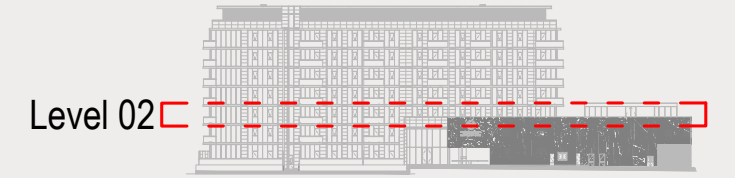
**MOHAMMED BIN RASHID  
AL MAKTOUM CITY**

**DISTRICT ONE**

## G+6 Apartments

SECOND FLOOR

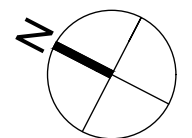
1, 2 and 3 Bedroom Apartments



Key Elevation



**DISCLAIMER:** All measurements, dimensions, coordinates and drawings given in the Property (Site/Floor) Plans are approximate and provided only for the purpose of illustration, information and general guidance as such drawings are not to scale. All the floor/site plans including concerned plot/room/swimming pool sizes, specifications, locations and orientations shown have been taken from concept designs prior to the actual development/construction and therefore their accuracy in relation to actual construction cannot be confirmed. Hence, we make no guarantee, warranty or representation as to the accuracy and completeness of the Property (Site/Floor) plan information as changes may be made during the development process, without notice. Always refer to latest IFC design available in the sales office for the most accurate representation of all construction details.





**MOHAMMED BIN RASHID  
AL MAKTOUM CITY**

**DISTRICT ONE**

## G+6 Apartments

THIRD TO SIXTH FLOORS

1, 2 and 3 Bedroom Apartments

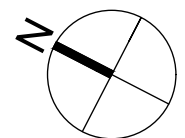
Levels 03 - 06



Key Elevation



**DISCLAIMER:** All measurements, dimensions, coordinates and drawings given in the Property (Site/Floor) Plans are approximate and provided only for the purpose of illustration, information and general guidance as such drawings are not to scale. All the floor/site plans including concerned plot/room/swimming pool sizes, specifications, locations and orientations shown have been taken from concept designs prior to the actual development/construction and therefore their accuracy in relation to actual construction cannot be confirmed. Hence, we make no guarantee, warranty or representation as to the accuracy and completeness of the Property (Site/Floor) plan information as changes may be made during the development process, without notice. Always refer to latest IFC design available in the sales office for the most accurate representation of all construction details.





**MOHAMMED BIN RASHID  
AL MAKTUUM CITY**

DISTRICT ONE

**LEVEL**

Ground

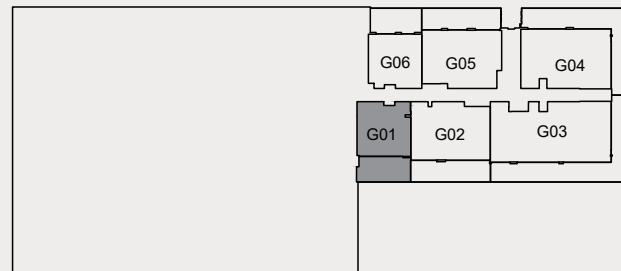
**1 Bedroom**

Unit G01, Ground Floor

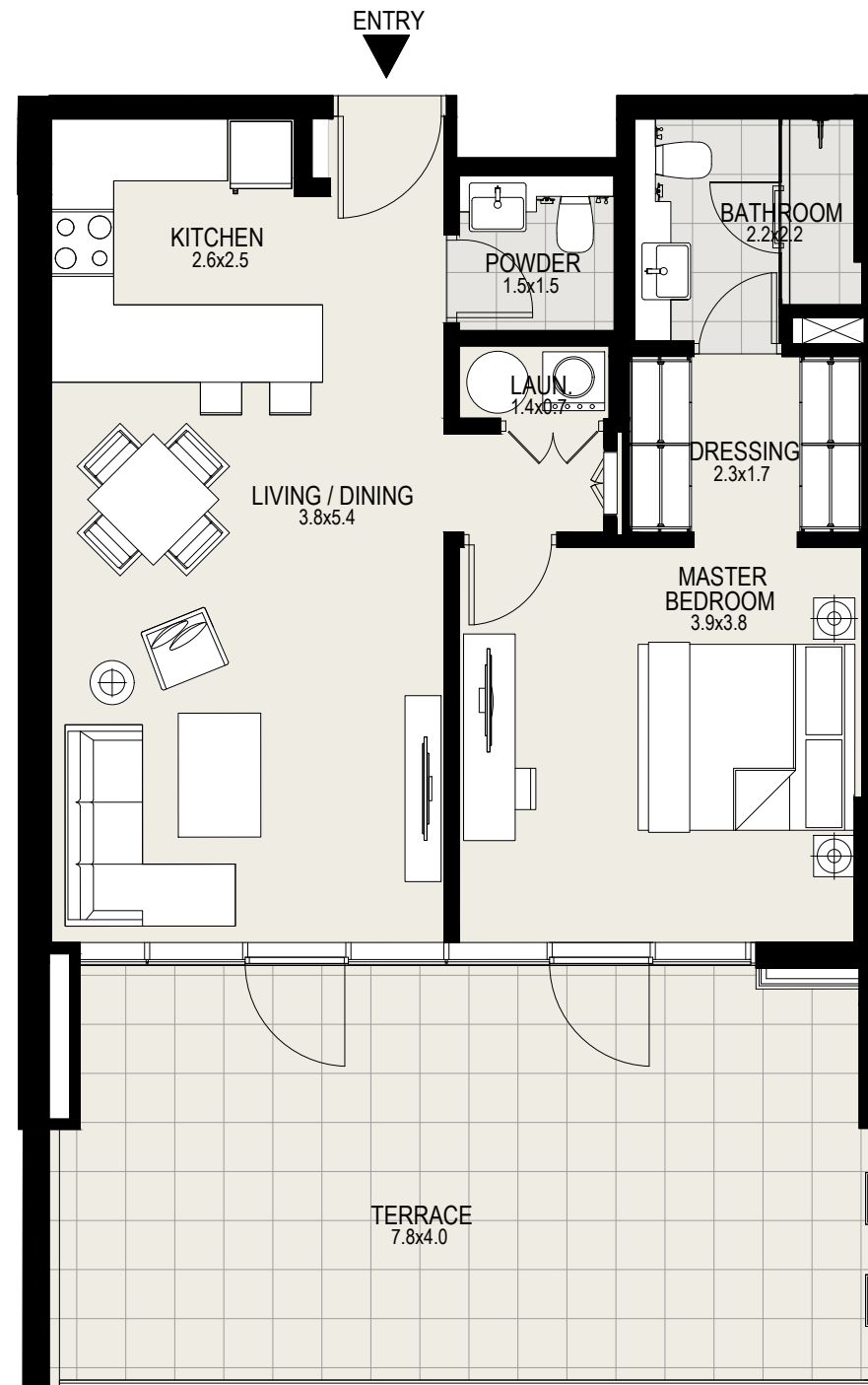
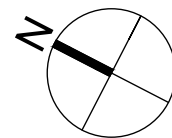
Suite Area : 712 sq. ft.

Balcony Area : 332 sq. ft.

Total Area : 1,044 sq. ft.



KEY PLAN



DISCLAIMER: All measurements, dimensions, coordinates and drawings given in the Property (Site/Floor) Plans are approximate and provided only for the purpose of illustration, information and general guidance as such drawings are not to scale. All the floor/site plans including concerned plot/room/swimming pool sizes, specifications, locations and orientations shown have been taken from concept designs prior to the actual development/construction and therefore their accuracy in relation to actual construction cannot be confirmed. Hence, we make no guarantee, warranty or representation as to the accuracy and completeness of the Property (Site/Floor) plan information as changes may be made during the development process, without notice. Always refer to latest IFC design available in the sales office for the most accurate representation of all construction details.



**MOHAMMED BIN RASHID  
AL MAKTOUM CITY**

DISTRICT ONE

**LEVEL**

Ground

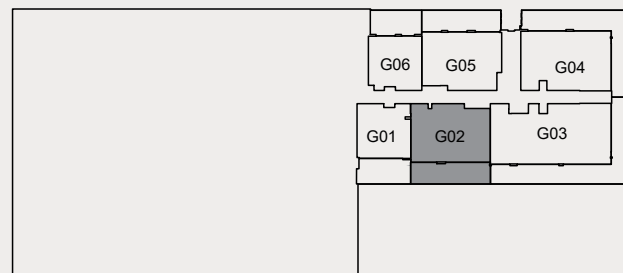
**2 Bedroom**

Unit G02, Ground Floor

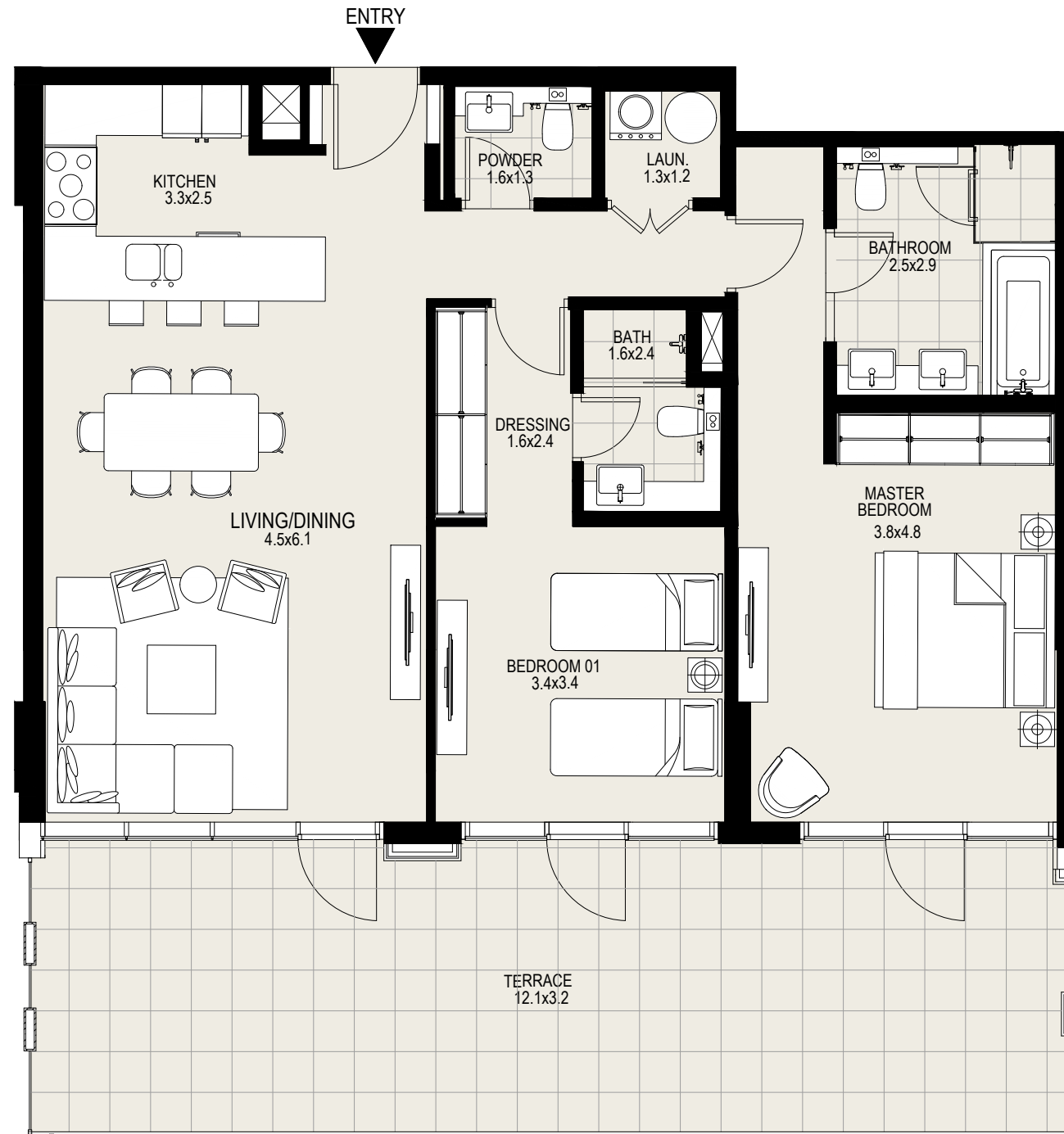
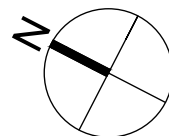
Suite Area : 1,113 sq. ft.

Balcony Area : 422 sq. ft.

Total Area : 1,535 sq. ft.



KEY PLAN



DISCLAIMER: All measurements, dimensions, coordinates and drawings given in the Property (Site/Floor) Plans are approximate and provided only for the purpose of illustration, information and general guidance as such drawings are not to scale. All the floor/site plans including concerned plot/room/swimming pool sizes, specifications, locations and orientations shown have been taken from concept designs prior to the actual development/construction and therefore their accuracy in relation to actual construction cannot be confirmed. Hence, we make no guarantee, warranty or representation as to the accuracy and completeness of the Property (Site/Floor) plan information as changes may be made during the development process, without notice. Always refer to latest IFC design available in the sales office for the most accurate representation of all construction details.



**MOHAMMED BIN RASHID  
AL MAKTOUN CITY**

DISTRICT ONE

**LEVEL**

Ground

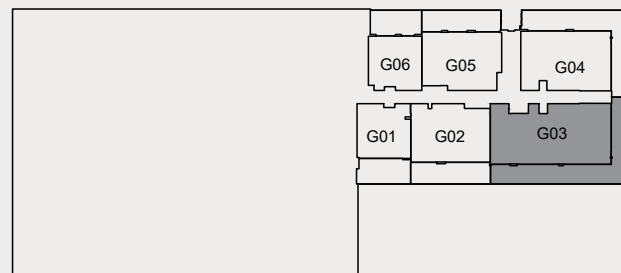
**3 Bedroom**

Unit G03, Ground Floor

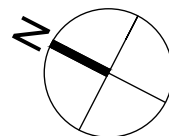
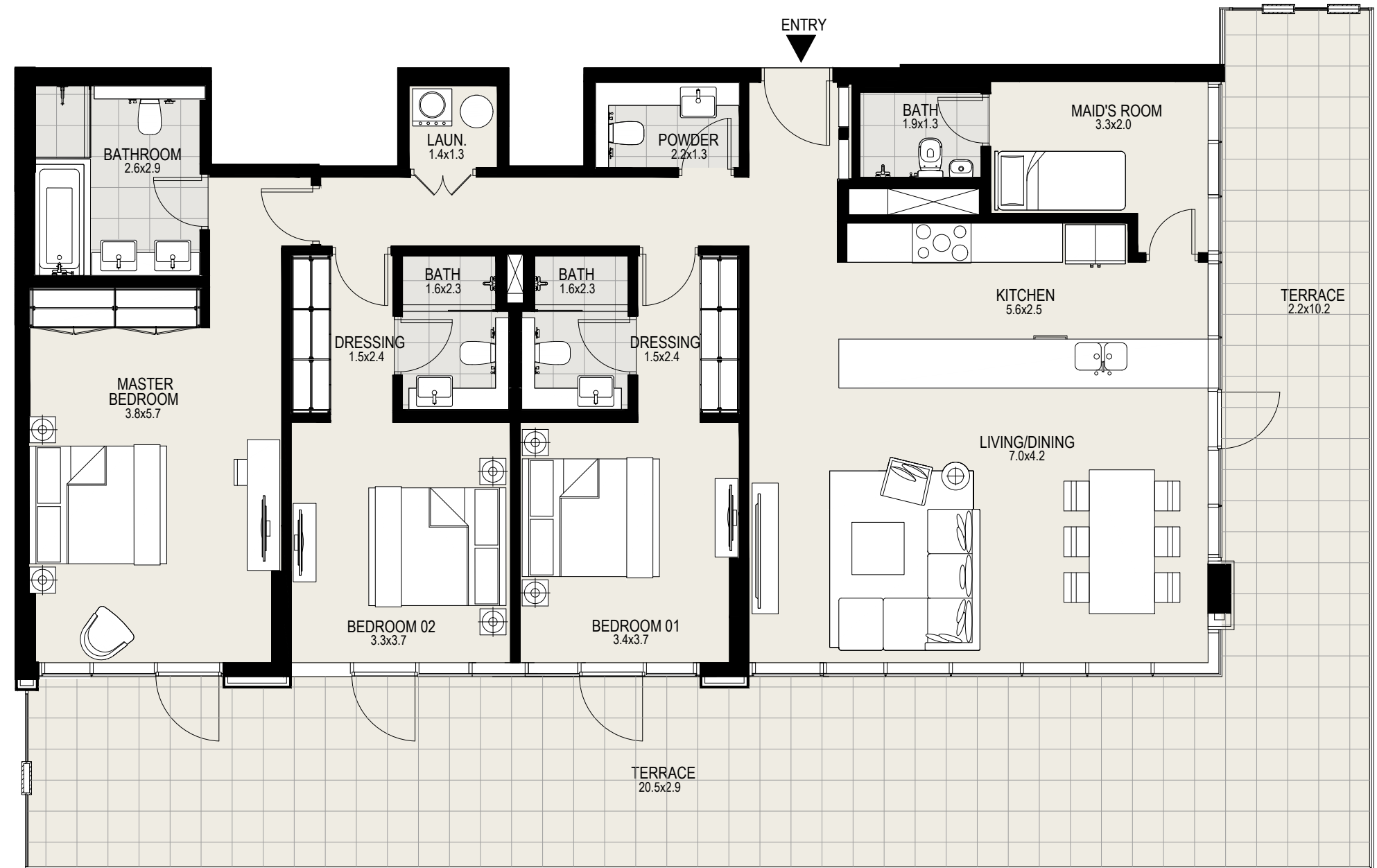
Suite Area : 1,730 sq. ft.

Balcony Area : 899 sq. ft.

Total Area : 2,629 sq. ft.



KEY PLAN



DISCLAIMER: All measurements, dimensions, coordinates and drawings given in the Property (Site/Floor) Plans are approximate and provided only for the purpose of illustration, information and general guidance as such drawings are not to scale. All the floor/site plans including concerned plot/room/swimming pool sizes, specifications, locations and orientations shown have been taken from concept designs prior to the actual development/construction and therefore their accuracy in relation to actual construction cannot be confirmed. Hence, we make no guarantee, warranty or representation as to the accuracy and completeness of the Property (Site/Floor) plan information as changes may be made during the development process, without notice. Always refer to latest IFC design available in the sales office for the most accurate representation of all construction details.



**MOHAMMED BIN RASHID  
AL MAKTOUM CITY**

DISTRICT ONE

**LEVEL**

Ground

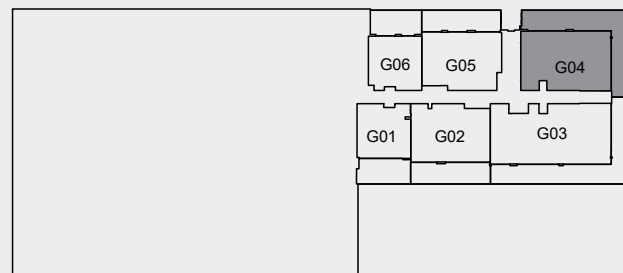
**2 Bedroom**

Unit G04, Ground Floor

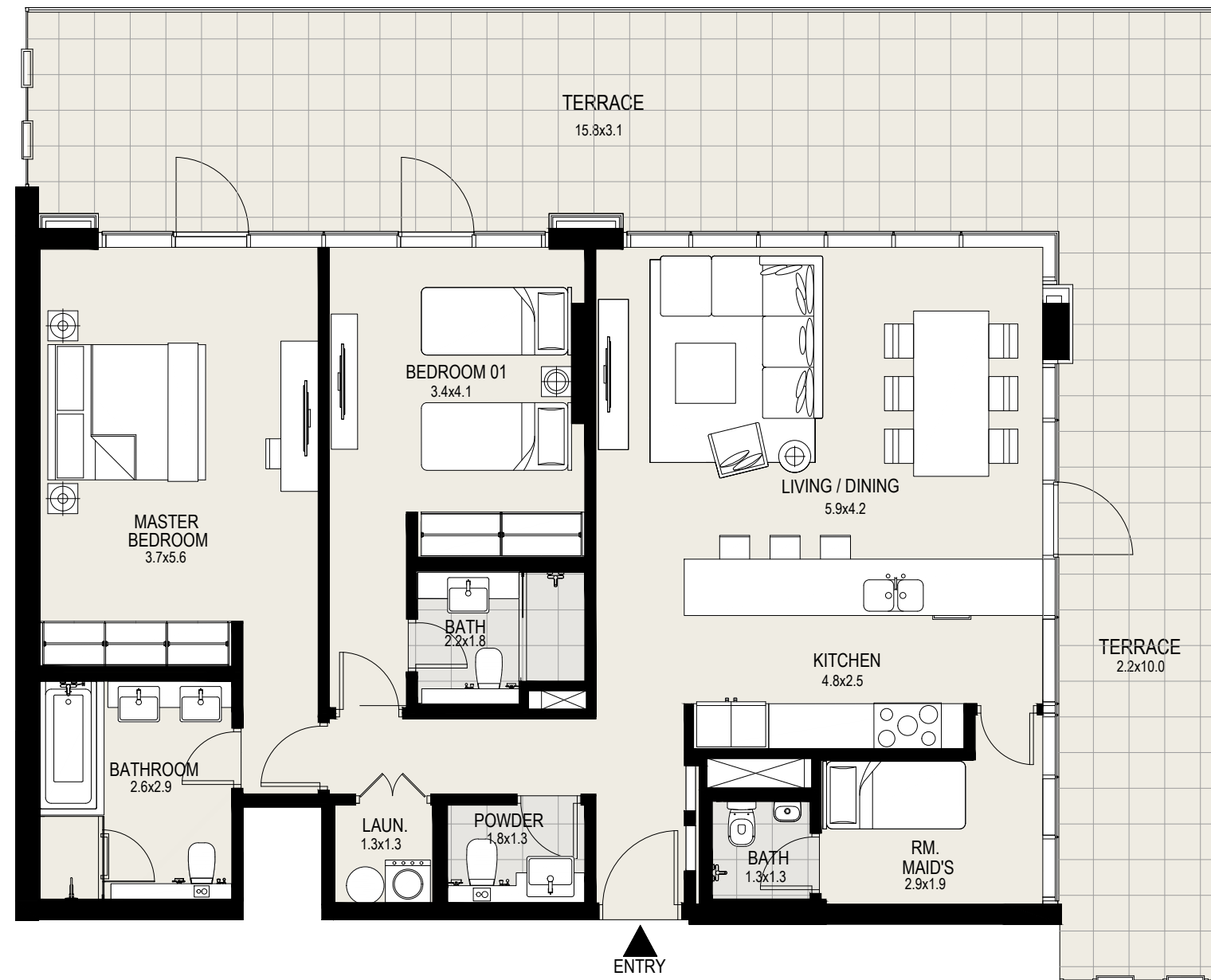
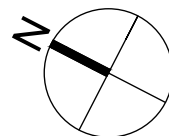
Suite Area : 1,303 sq. ft.

Balcony Area : 771 sq. ft.

Total Area : 2,074 sq. ft.



KEY PLAN



DISCLAIMER: All measurements, dimensions, coordinates and drawings given in the Property (Site/Floor) Plans are approximate and provided only for the purpose of illustration, information and general guidance as such drawings are not to scale. All the floor/site plans including concerned plot/room/swimming pool sizes, specifications, locations and orientations shown have been taken from concept designs prior to the actual development/construction and therefore their accuracy in relation to actual construction cannot be confirmed. Hence, we make no guarantee, warranty or representation as to the accuracy and completeness of the Property (Site/Floor) plan information as changes may be made during the development process, without notice. Always refer to latest IFC design available in the sales office for the most accurate representation of all construction details.





**MOHAMMED BIN RASHID  
AL MAKTOUM CITY**

DISTRICT ONE

**LEVEL**

Ground

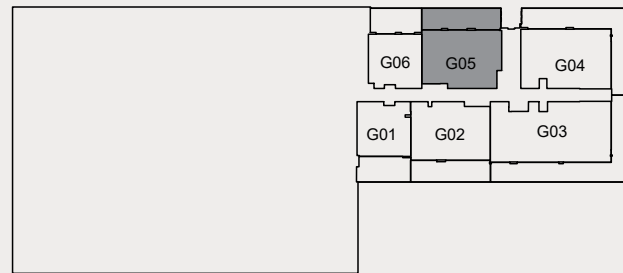
**2 Bedroom**

Unit G05, Ground Floor

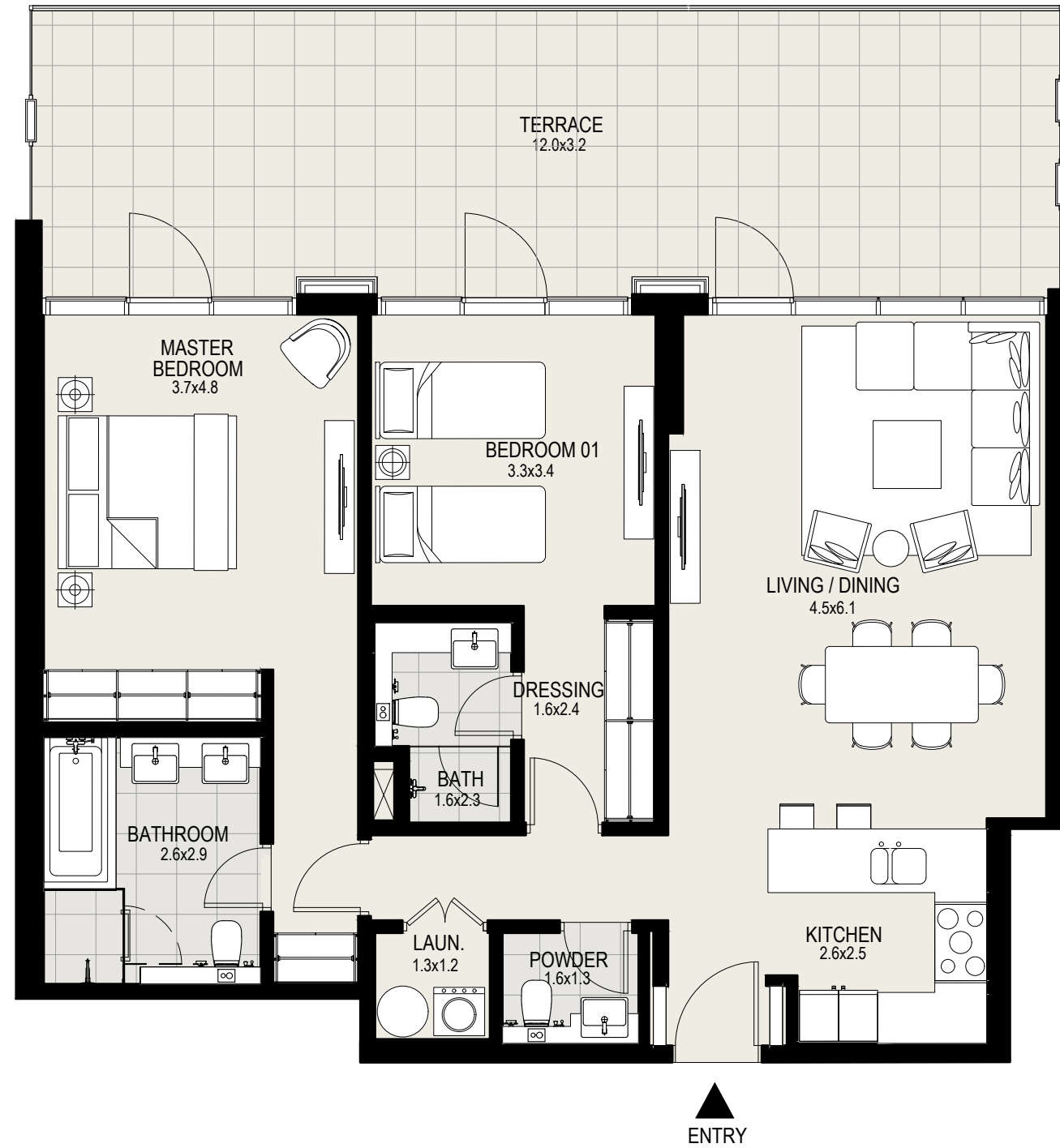
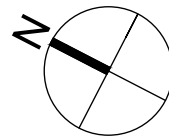
Suite Area : 1,100 sq. ft.

Balcony Area : 416 sq. ft.

Total Area : 1,516 sq. ft.



KEY PLAN



DISCLAIMER: All measurements, dimensions, coordinates and drawings given in the Property (Site/Floor) Plans are approximate and provided only for the purpose of illustration, information and general guidance as such drawings are not to scale. All the floor/site plans including concerned plot/room/swimming pool sizes, specifications, locations and orientations shown have been taken from concept designs prior to the actual development/construction and therefore their accuracy in relation to actual construction cannot be confirmed. Hence, we make no guarantee, warranty or representation as to the accuracy and completeness of the Property (Site/Floor) plan information as changes may be made during the development process, without notice. Always refer to latest IFC design available in the sales office for the most accurate representation of all construction details.



**MOHAMMED BIN RASHID  
AL MAKTOUN CITY**

DISTRICT ONE

**LEVEL**

Ground

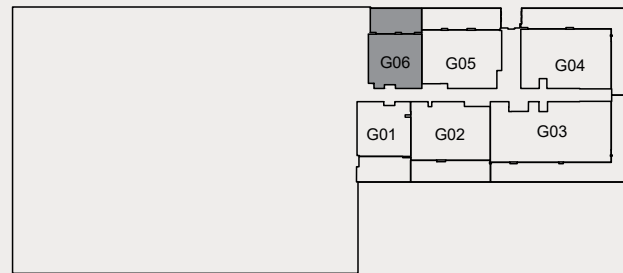
**1 Bedroom**

Unit G06, Ground Floor

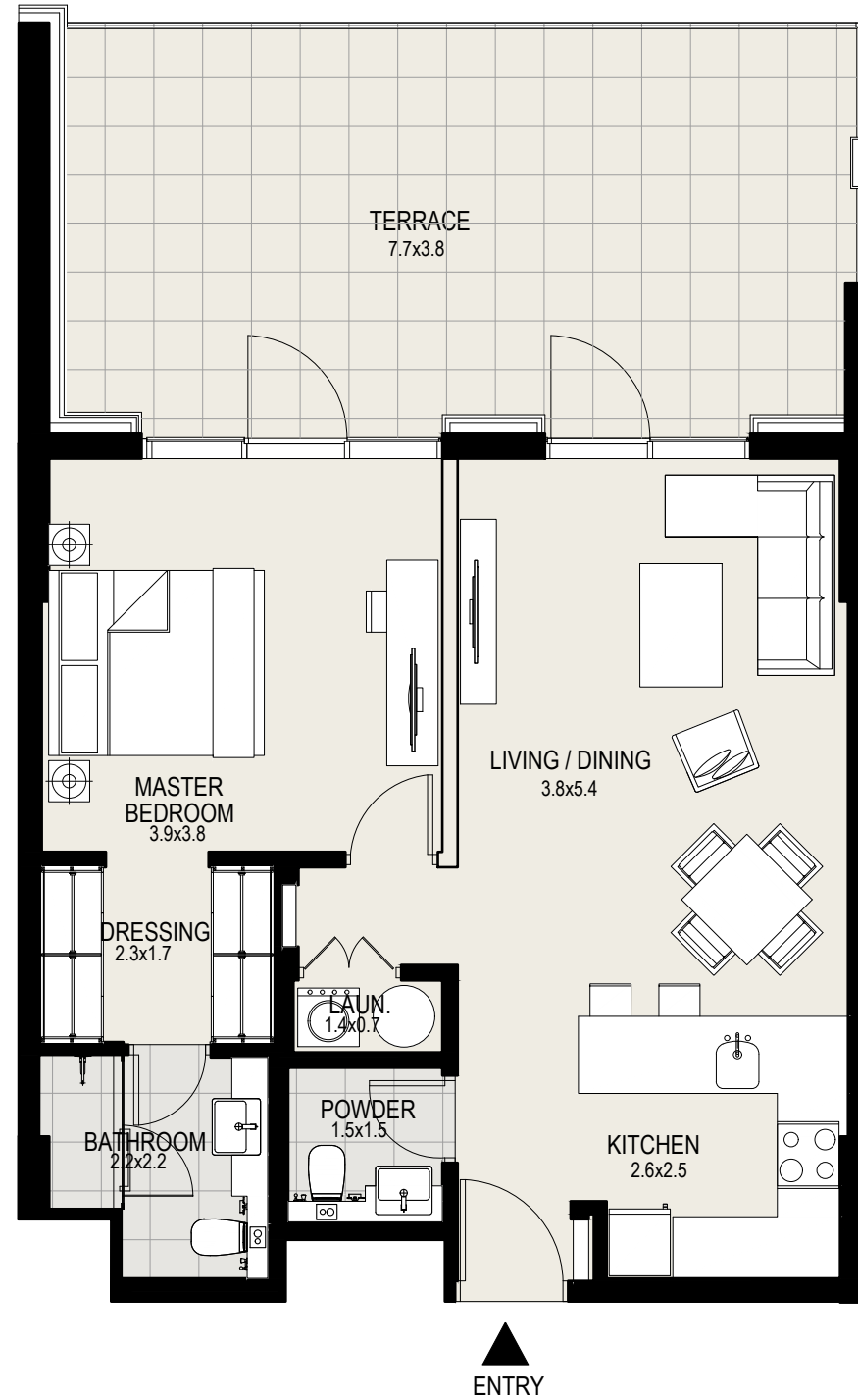
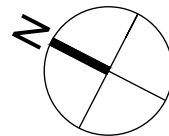
Suite Area : 703 sq. ft.

Balcony Area : 318 sq. ft.

Total Area : 1,021 sq. ft.



KEY PLAN



DISCLAIMER: All measurements, dimensions, coordinates and drawings given in the Property (Site/Floor) Plans are approximate and provided only for the purpose of illustration, information and general guidance as such drawings are not to scale. All the floor/site plans including concerned plot/room/swimming pool sizes, specifications, locations and orientations shown have been taken from concept designs prior to the actual development/construction and therefore their accuracy in relation to actual construction cannot be confirmed. Hence, we make no guarantee, warranty or representation as to the accuracy and completeness of the Property (Site/Floor) plan information as changes may be made during the development process, without notice. Always refer to latest IFC design available in the sales office for the most accurate representation of all construction details.



**MOHAMMED BIN RASHID  
AL MAKTOUM CITY**

DISTRICT ONE

LEVEL

01

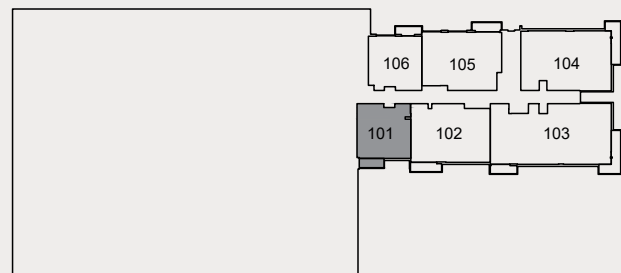
1 Bedroom

Unit 101, First Floor

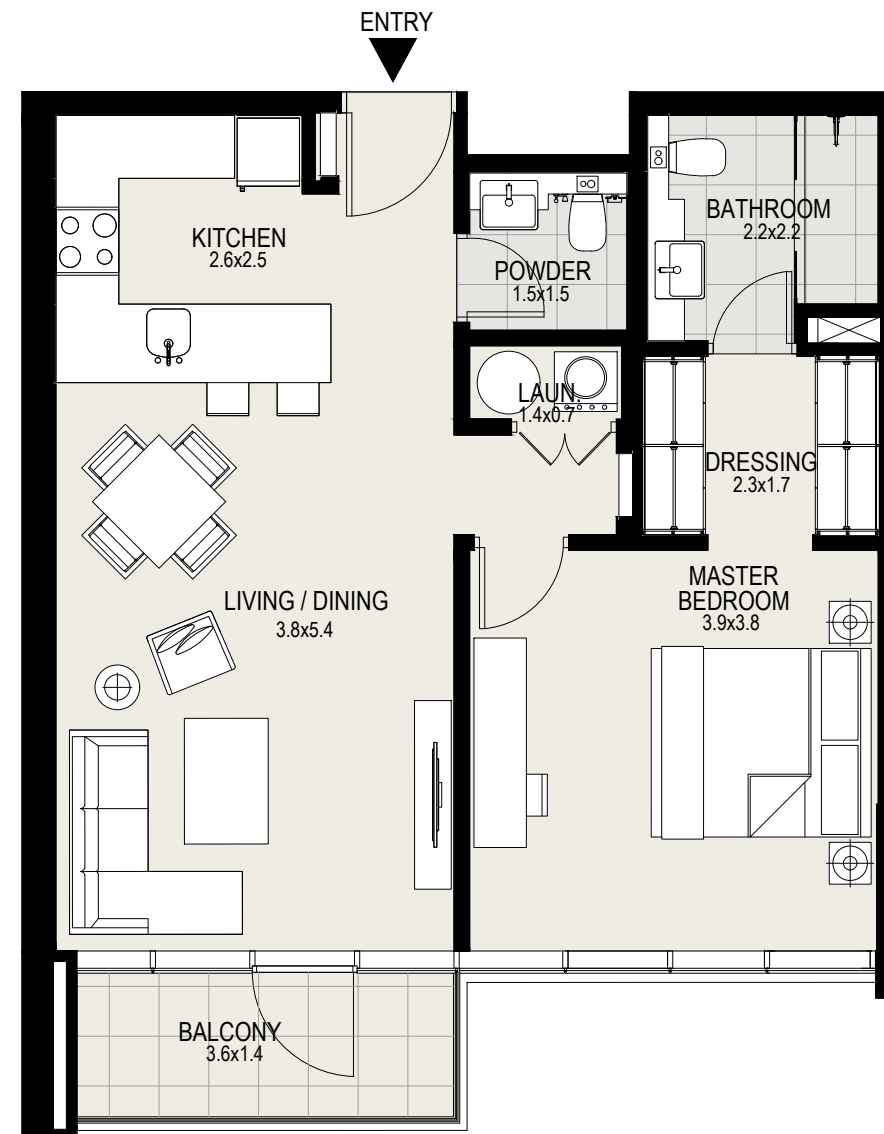
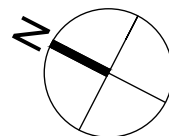
Suite Area : 712 sq. ft.

Balcony Area : 57 sq. ft.

Total Area : 769 sq. ft.



KEY PLAN



DISCLAIMER: All measurements, dimensions, coordinates and drawings given in the Property (Site/Floor) Plans are approximate and provided only for the purpose of illustration, information and general guidance as such drawings are not to scale. All the floor/site plans including concerned plot/room/swimming pool sizes, specifications, locations and orientations shown have been taken from concept designs prior to the actual development/construction and therefore their accuracy in relation to actual construction cannot be confirmed. Hence, we make no guarantee, warranty or representation as to the accuracy and completeness of the Property (Site/Floor) plan information as changes may be made during the development process, without notice. Always refer to latest IFC design available in the sales office for the most accurate representation of all construction details.



**MOHAMMED BIN RASHID  
AL MAKTOUN CITY**

DISTRICT ONE

**LEVEL**

01

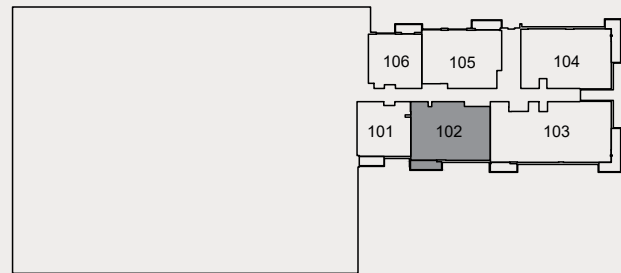
**2 Bedroom**

Unit 102, First Floor

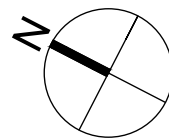
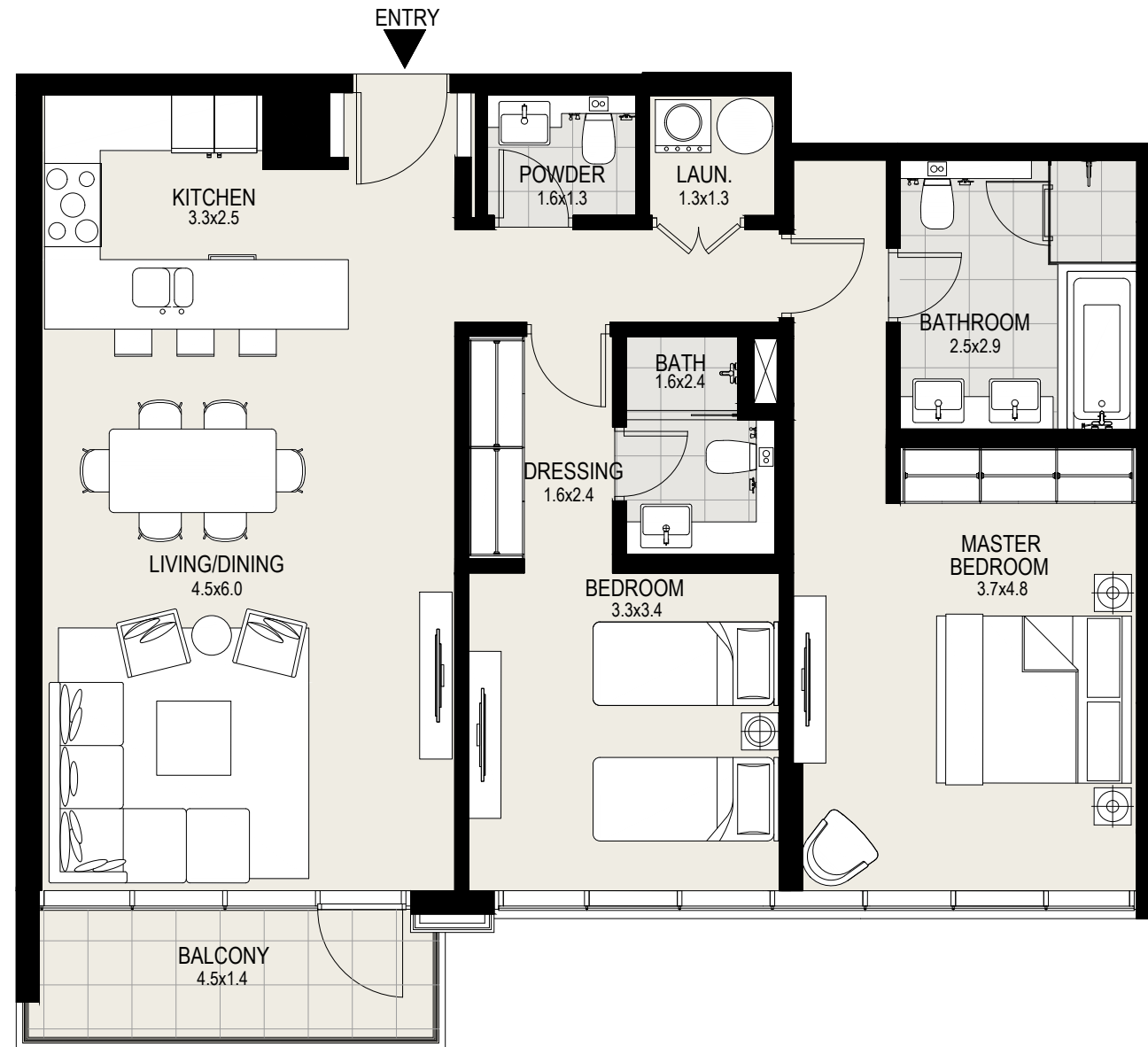
Suite Area : 1,113 sq. ft.

Balcony Area : 70 sq. ft.

Total Area : 1,183 sq. ft.



KEY PLAN



DISCLAIMER: All measurements, dimensions, coordinates and drawings given in the Property (Site/Floor) Plans are approximate and provided only for the purpose of illustration, information and general guidance as such drawings are not to scale. All the floor/site plans including concerned plot/room/swimming pool sizes, specifications, locations and orientations shown have been taken from concept designs prior to the actual development/construction and therefore their accuracy in relation to actual construction cannot be confirmed. Hence, we make no guarantee, warranty or representation as to the accuracy and completeness of the Property (Site/Floor) plan information as changes may be made during the development process, without notice. Always refer to latest IFC design available in the sales office for the most accurate representation of all construction details.



**MOHAMMED BIN RASHID  
AL MAKTOUM CITY**

DISTRICT ONE

LEVEL

01

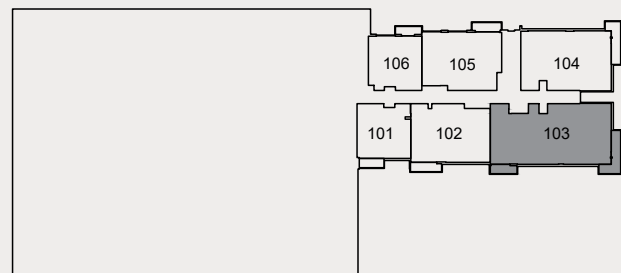
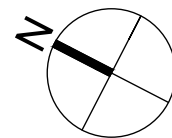
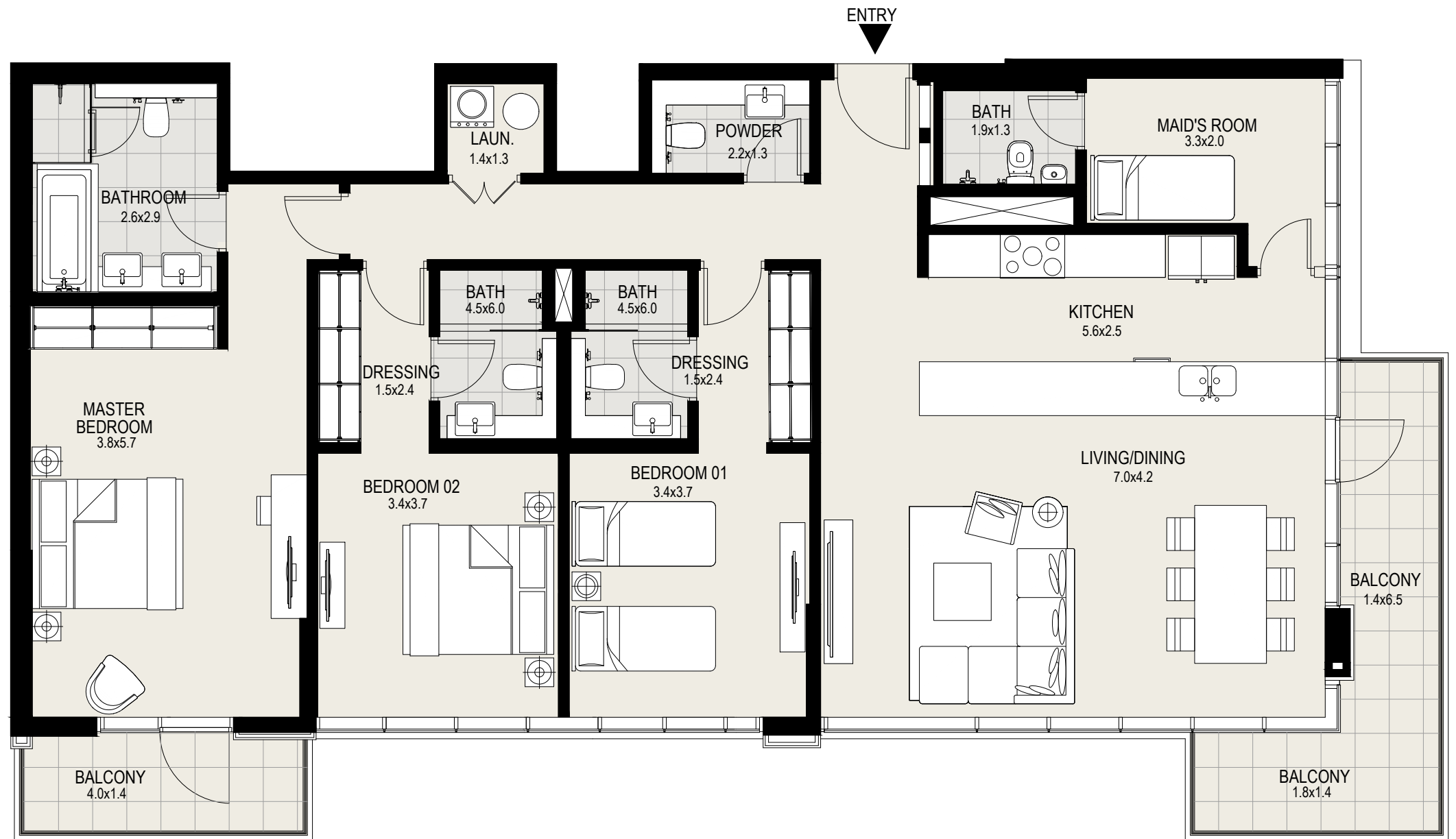
3 Bedroom

Unit 103, First Floor

Suite Area : 1,730 sq. ft.

Balcony Area : 187 sq. ft.

Total Area : 1,917 sq. ft.



KEY PLAN

DISCLAIMER: All measurements, dimensions, coordinates and drawings given in the Property (Site/Floor) Plans are approximate and provided only for the purpose of illustration, information and general guidance as such drawings are not to scale. All the floor/site plans including concerned plot/room/swimming pool sizes, specifications, locations and orientations shown have been taken from concept designs prior to the actual development/construction and therefore their accuracy in relation to actual construction cannot be confirmed. Hence, we make no guarantee, warranty or representation as to the accuracy and completeness of the Property (Site/Floor) plan information as changes may be made during the development process, without notice. Always refer to latest IFC design available in the sales office for the most accurate representation of all construction details.



**MOHAMMED BIN RASHID  
AL MAKTOUM CITY**

DISTRICT ONE

**LEVEL**

01

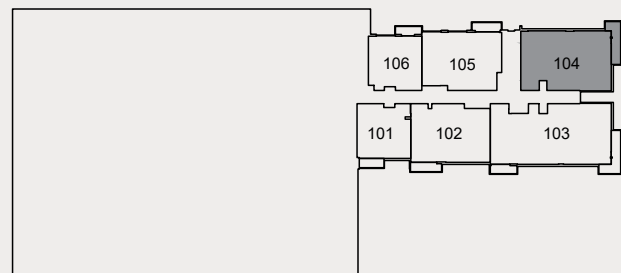
**2 Bedroom**

Unit 104, First Floor

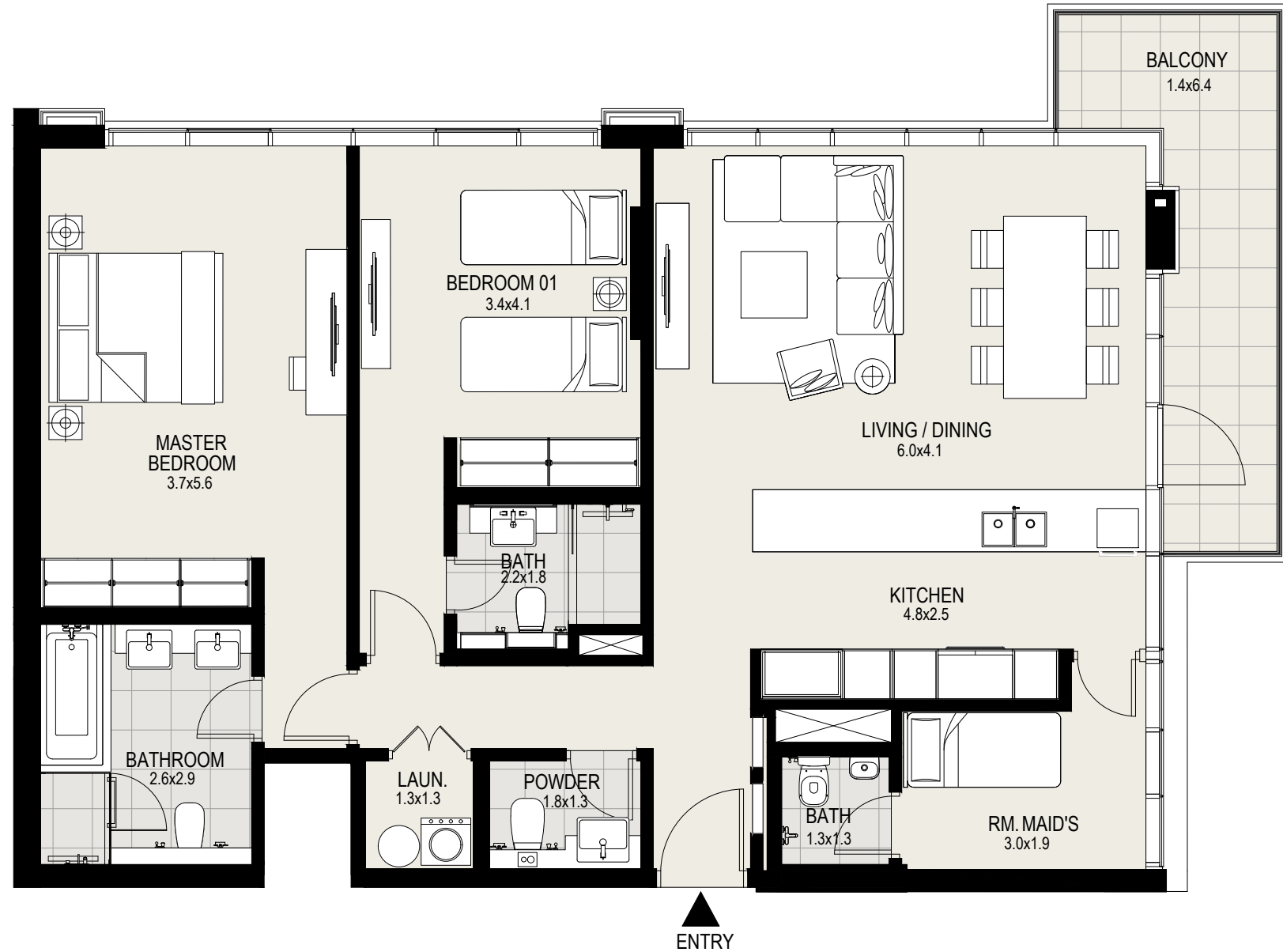
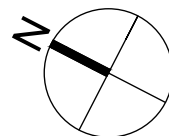
Suite Area : 1,303 sq. ft.

Balcony Area : 113 sq. ft.

Total Area : 1,416 sq. ft.



KEY PLAN



DISCLAIMER: All measurements, dimensions, coordinates and drawings given in the Property (Site/Floor) Plans are approximate and provided only for the purpose of illustration, information and general guidance as such drawings are not to scale. All the floor/site plans including concerned plot/room/swimming pool sizes, specifications, locations and orientations shown have been taken from concept designs prior to the actual development/construction and therefore their accuracy in relation to actual construction cannot be confirmed. Hence, we make no guarantee, warranty or representation as to the accuracy and completeness of the Property (Site/Floor) plan information as changes may be made during the development process, without notice. Always refer to latest IFC design available in the sales office for the most accurate representation of all construction details.



**MOHAMMED BIN RASHID  
AL MAKTOUM CITY**

DISTRICT ONE

LEVEL

01

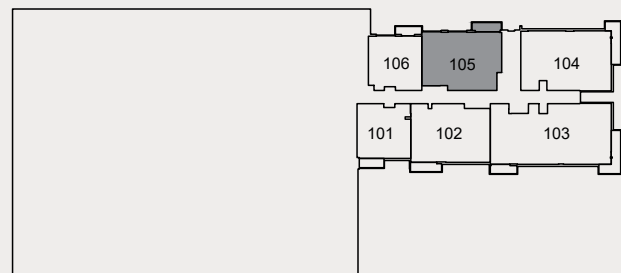
2 Bedroom

Unit 105, First Floor

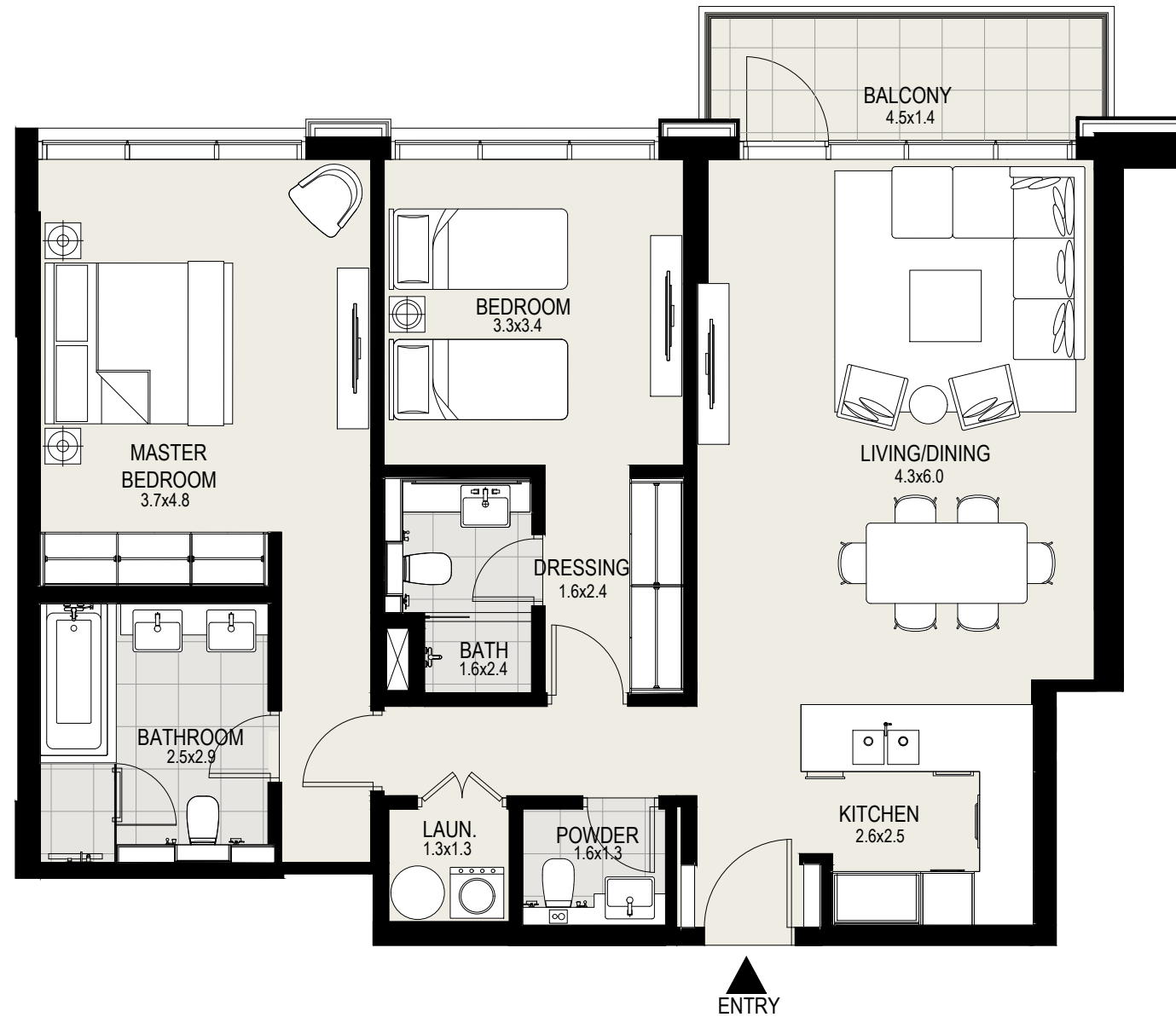
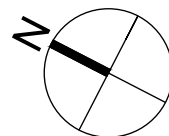
Suite Area : 1,100 sq. ft.

Balcony Area : 66 sq. ft.

Total Area : 1,166 sq. ft.



KEY PLAN



DISCLAIMER: All measurements, dimensions, coordinates and drawings given in the Property (Site/Floor) Plans are approximate and provided only for the purpose of illustration, information and general guidance as such drawings are not to scale. All the floor/site plans including concerned plot/room/swimming pool sizes, specifications, locations and orientations shown have been taken from concept designs prior to the actual development/construction and therefore their accuracy in relation to actual construction cannot be confirmed. Hence, we make no guarantee, warranty or representation as to the accuracy and completeness of the Property (Site/Floor) plan information as changes may be made during the development process, without notice. Always refer to latest IFC design available in the sales office for the most accurate representation of all construction details.



**MOHAMMED BIN RASHID  
AL MAKTOUM CITY**

DISTRICT ONE

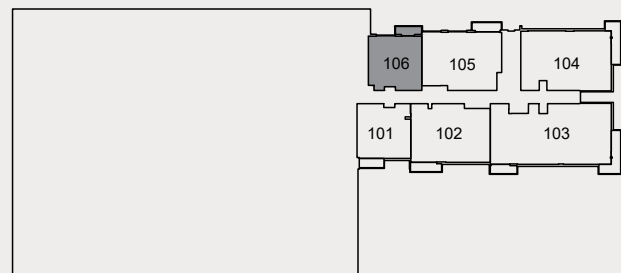
**LEVEL**

01

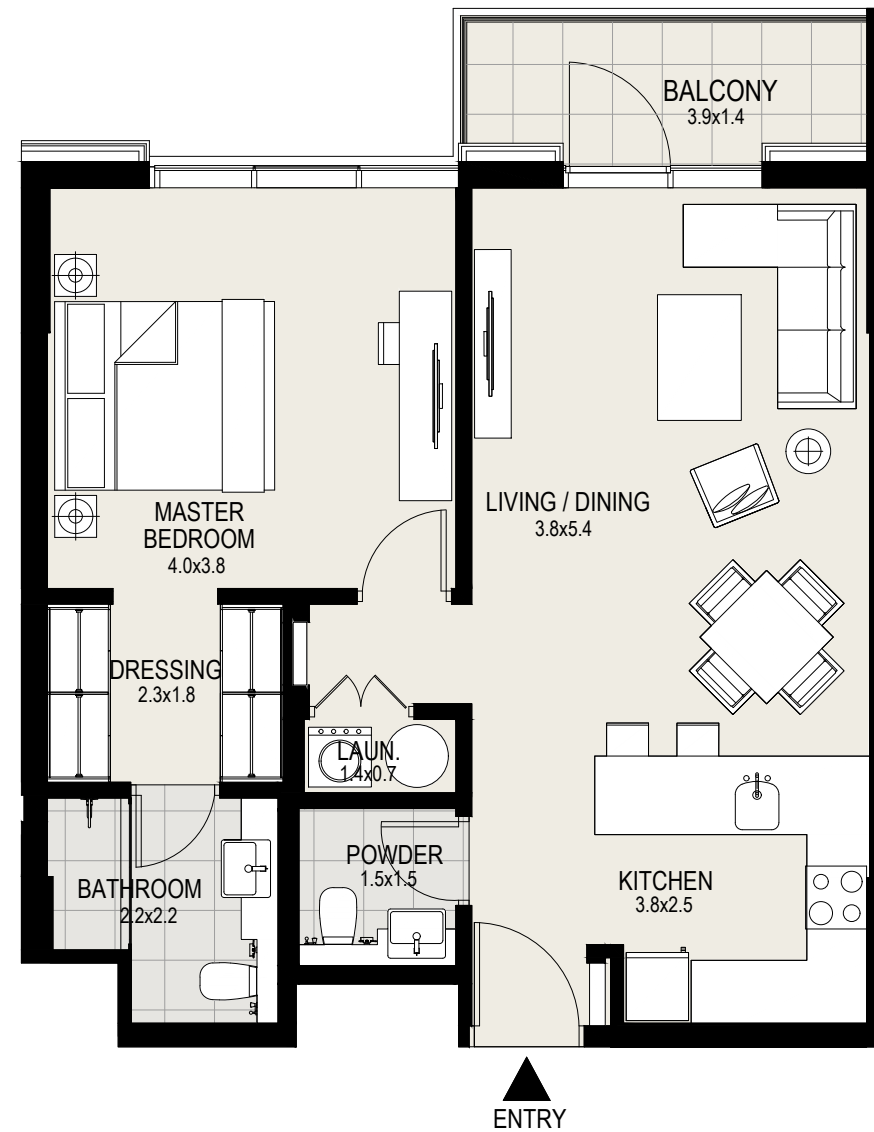
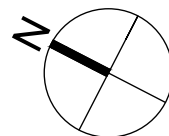
**1 Bedroom**

Unit 106, First Floor

Suite Area :	703	sq. ft.
Balcony Area :	56	sq. ft.
Total Area :	759	sq. ft.



KEY PLAN



DISCLAIMER: All measurements, dimensions, coordinates and drawings given in the Property (Site/Floor) Plans are approximate and provided only for the purpose of illustration, information and general guidance as such drawings are not to scale. All the floor/site plans including concerned plot/room/swimming pool sizes, specifications, locations and orientations shown have been taken from concept designs prior to the actual development/construction and therefore their accuracy in relation to actual construction cannot be confirmed. Hence, we make no guarantee, warranty or representation as to the accuracy and completeness of the Property (Site/Floor) plan information as changes may be made during the development process, without notice. Always refer to latest IFC design available in the sales office for the most accurate representation of all construction details.





**MOHAMMED BIN RASHID  
AL MAKTOUN CITY**

DISTRICT ONE

LEVEL

02

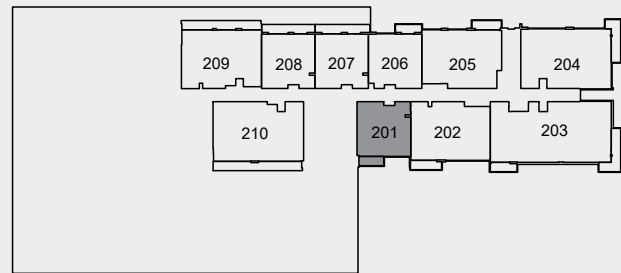
1 Bedroom

Unit 201, 2nd Floor

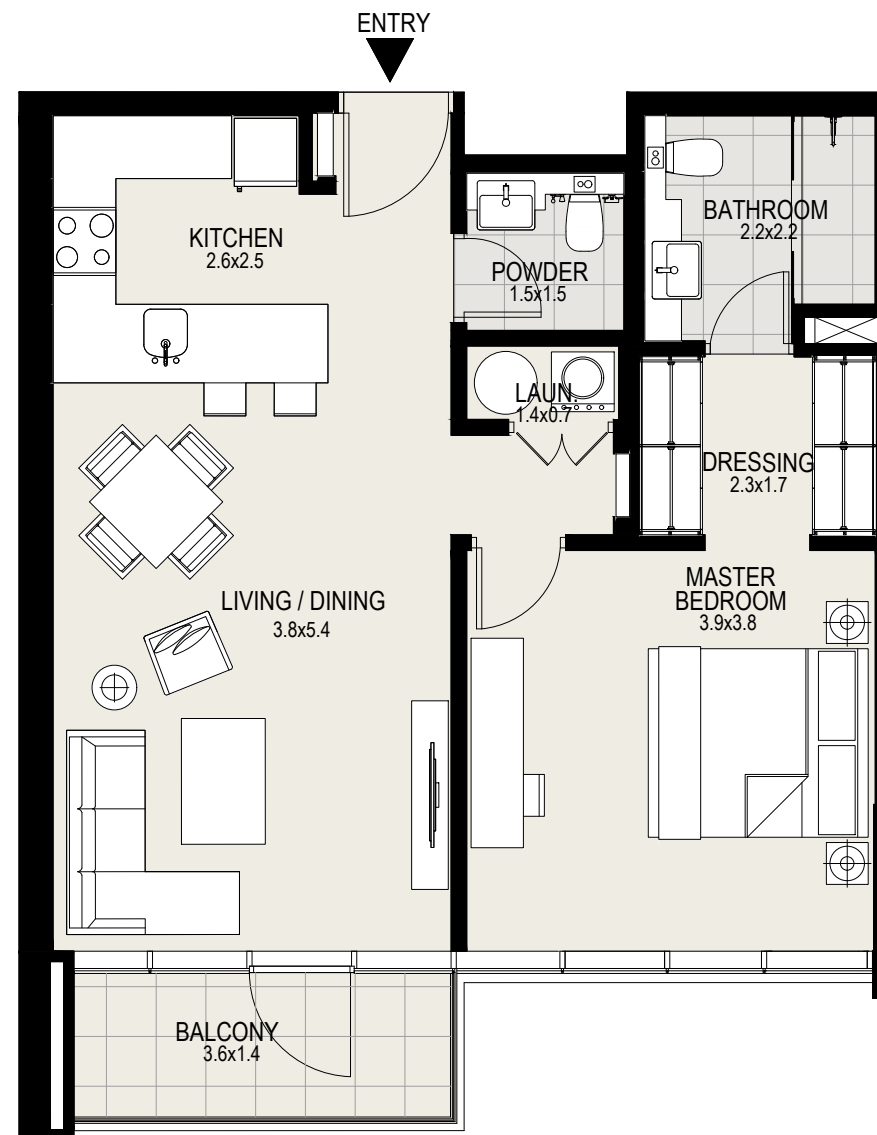
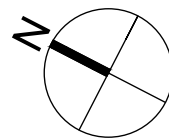
Suite Area : 712 sq. ft.

Balcony Area : 57 sq. ft.

Total Area : 769 sq. ft.



KEY PLAN



DISCLAIMER: All measurements, dimensions, coordinates and drawings given in the Property (Site/Floor) Plans are approximate and provided only for the purpose of illustration, information and general guidance as such drawings are not to scale. All the floor/site plans including concerned plot/room/swimming pool sizes, specifications, locations and orientations shown have been taken from concept designs prior to the actual development/construction and therefore their accuracy in relation to actual construction cannot be confirmed. Hence, we make no guarantee, warranty or representation as to the accuracy and completeness of the Property (Site/Floor) plan information as changes may be made during the development process, without notice. Always refer to latest IFC design available in the sales office for the most accurate representation of all construction details.



**MOHAMMED BIN RASHID  
AL MAKTOUM CITY**

DISTRICT ONE

LEVEL

02

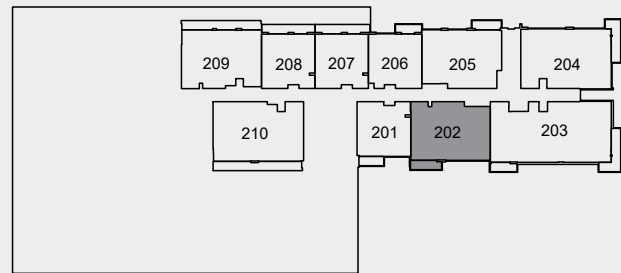
2 Bedroom

Unit 202, 2nd Floor

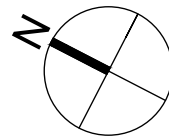
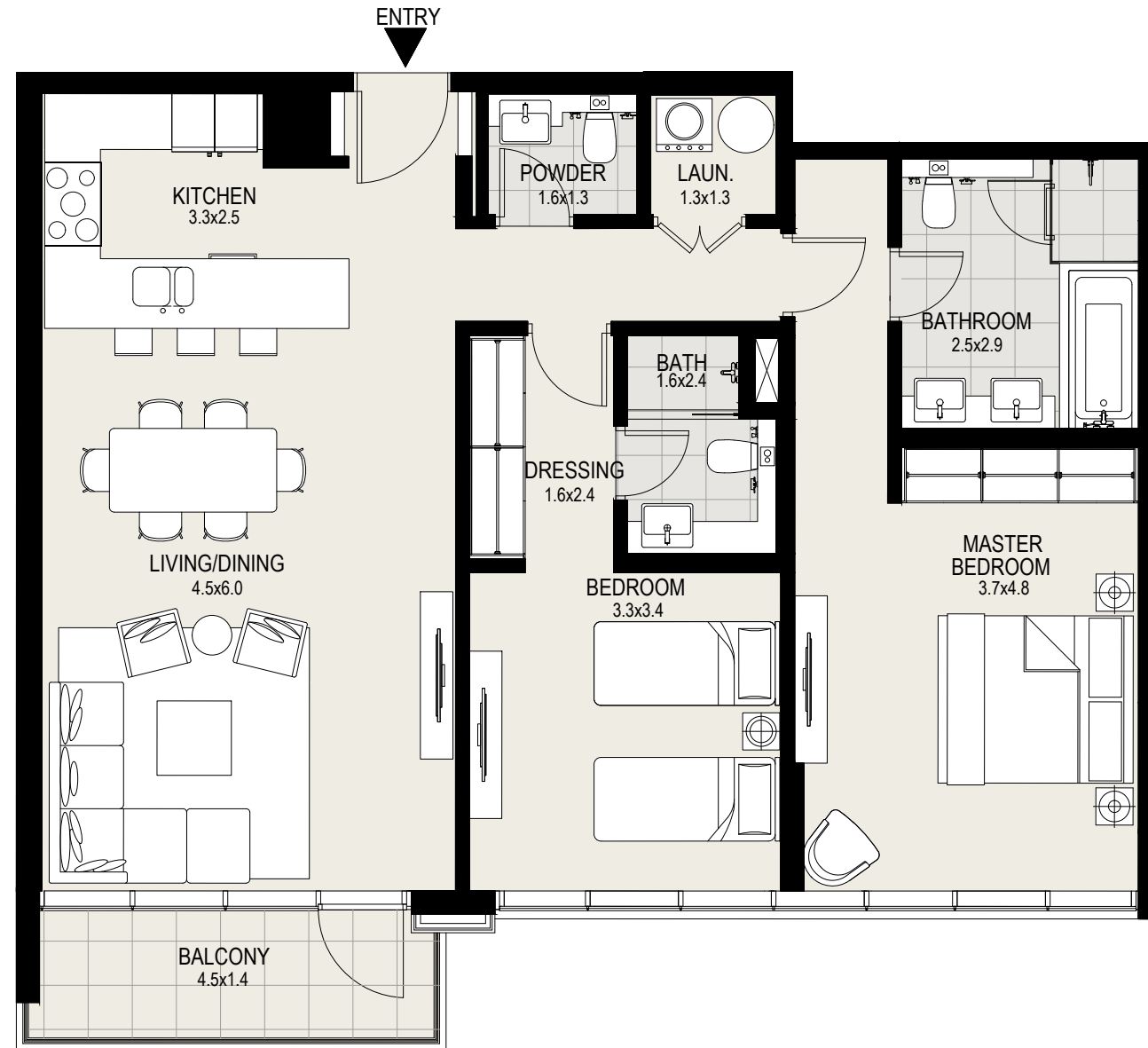
Suite Area : 1,113 sq. ft.

Balcony Area : 70 sq. ft.

Total Area : 1,183 sq. ft.



KEY PLAN



DISCLAIMER: All measurements, dimensions, coordinates and drawings given in the Property (Site/Floor) Plans are approximate and provided only for the purpose of illustration, information and general guidance as such drawings are not to scale. All the floor/site plans including concerned plot/room/swimming pool sizes, specifications, locations and orientations shown have been taken from concept designs prior to the actual development/construction and therefore their accuracy in relation to actual construction cannot be confirmed. Hence, we make no guarantee, warranty or representation as to the accuracy and completeness of the Property (Site/Floor) plan information as changes may be made during the development process, without notice. Always refer to latest IFC design available in the sales office for the most accurate representation of all construction details.



**MOHAMMED BIN RASHID  
AL MAKTOUN CITY**

DISTRICT ONE

LEVEL

02

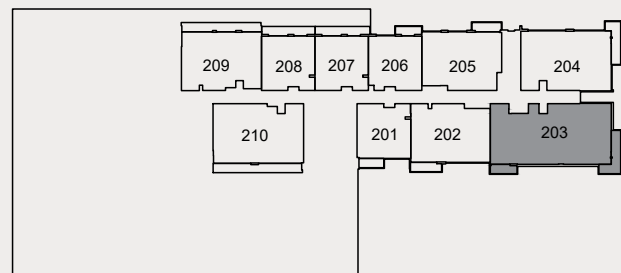
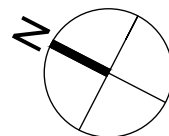
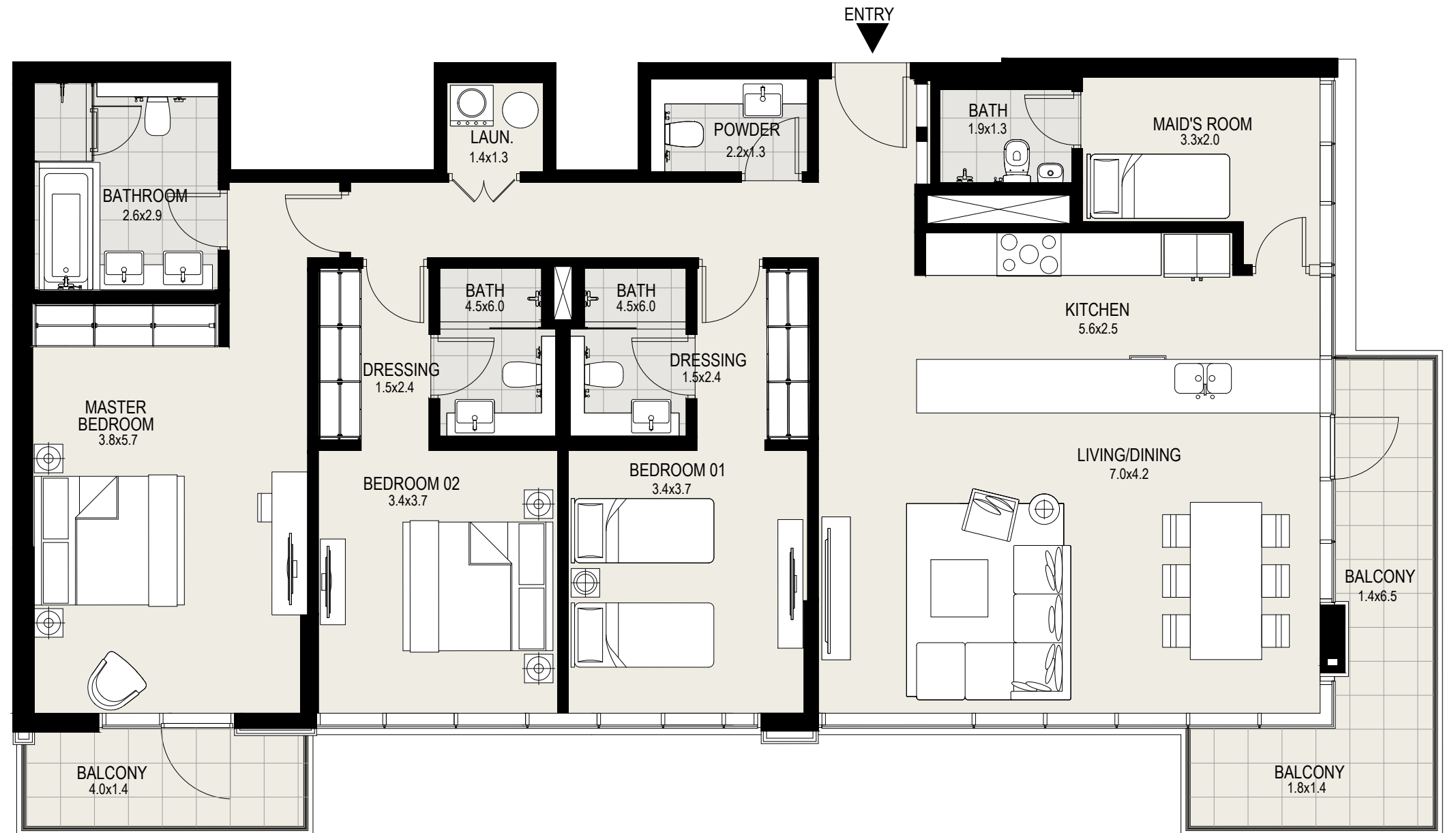
3 Bedroom

Unit 203, 2nd Floor

Suite Area : 1,730 sq. ft.

Balcony Area : 187 sq. ft.

Total Area : 1,917 sq. ft.



KEY PLAN

DISCLAIMER: All measurements, dimensions, coordinates and drawings given in the Property (Site/Floor) Plans are approximate and provided only for the purpose of illustration, information and general guidance as such drawings are not to scale. All the floor/site plans including concerned plot/room/swimming pool sizes, specifications, locations and orientations shown have been taken from concept designs prior to the actual development/construction and therefore their accuracy in relation to actual construction cannot be confirmed. Hence, we make no guarantee, warranty or representation as to the accuracy and completeness of the Property (Site/Floor) plan information as changes may be made during the development process, without notice. Always refer to latest IFC design available in the sales office for the most accurate representation of all construction details.



**MOHAMMED BIN RASHID  
AL MAKTOUM CITY**

DISTRICT ONE

LEVEL

02

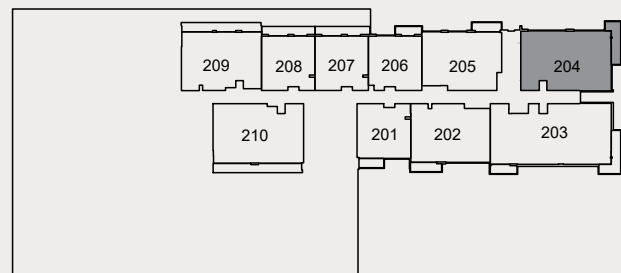
2 Bedroom

Unit 204, 2nd Floor

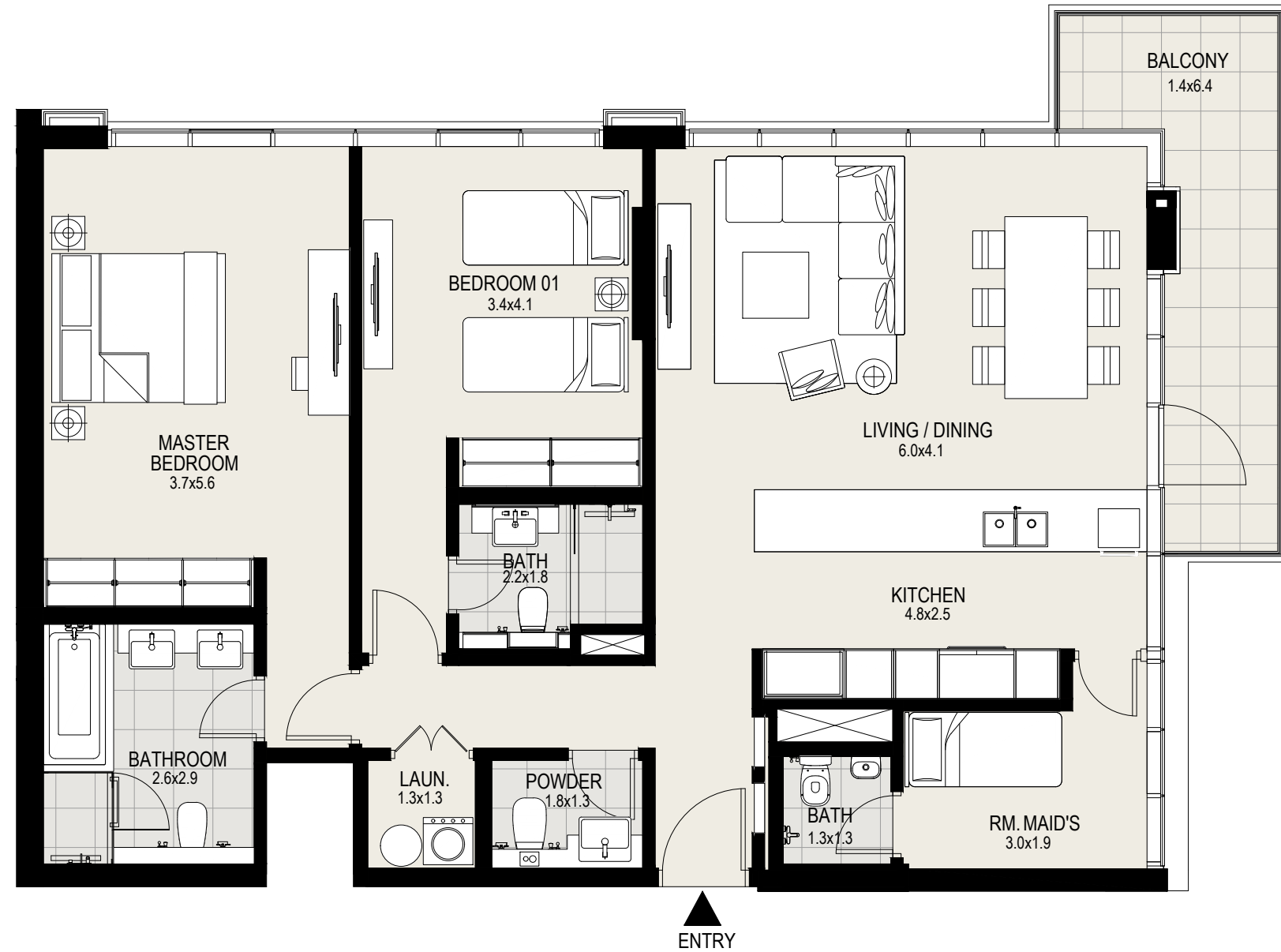
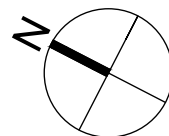
Suite Area : 1,303 sq. ft.

Balcony Area : 113 sq. ft.

Total Area : 1,416 sq. ft.



KEY PLAN



DISCLAIMER: All measurements, dimensions, coordinates and drawings given in the Property (Site/Floor) Plans are approximate and provided only for the purpose of illustration, information and general guidance as such drawings are not to scale. All the floor/site plans including concerned plot/room/swimming pool sizes, specifications, locations and orientations shown have been taken from concept designs prior to the actual development/construction and therefore their accuracy in relation to actual construction cannot be confirmed. Hence, we make no guarantee, warranty or representation as to the accuracy and completeness of the Property (Site/Floor) plan information as changes may be made during the development process, without notice. Always refer to latest IFC design available in the sales office for the most accurate representation of all construction details.



**MOHAMMED BIN RASHID  
AL MAKTOUM CITY**

DISTRICT ONE

LEVEL

02

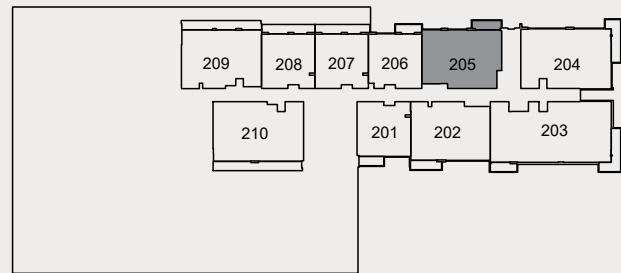
2 Bedroom

Unit 205, 2nd Floor

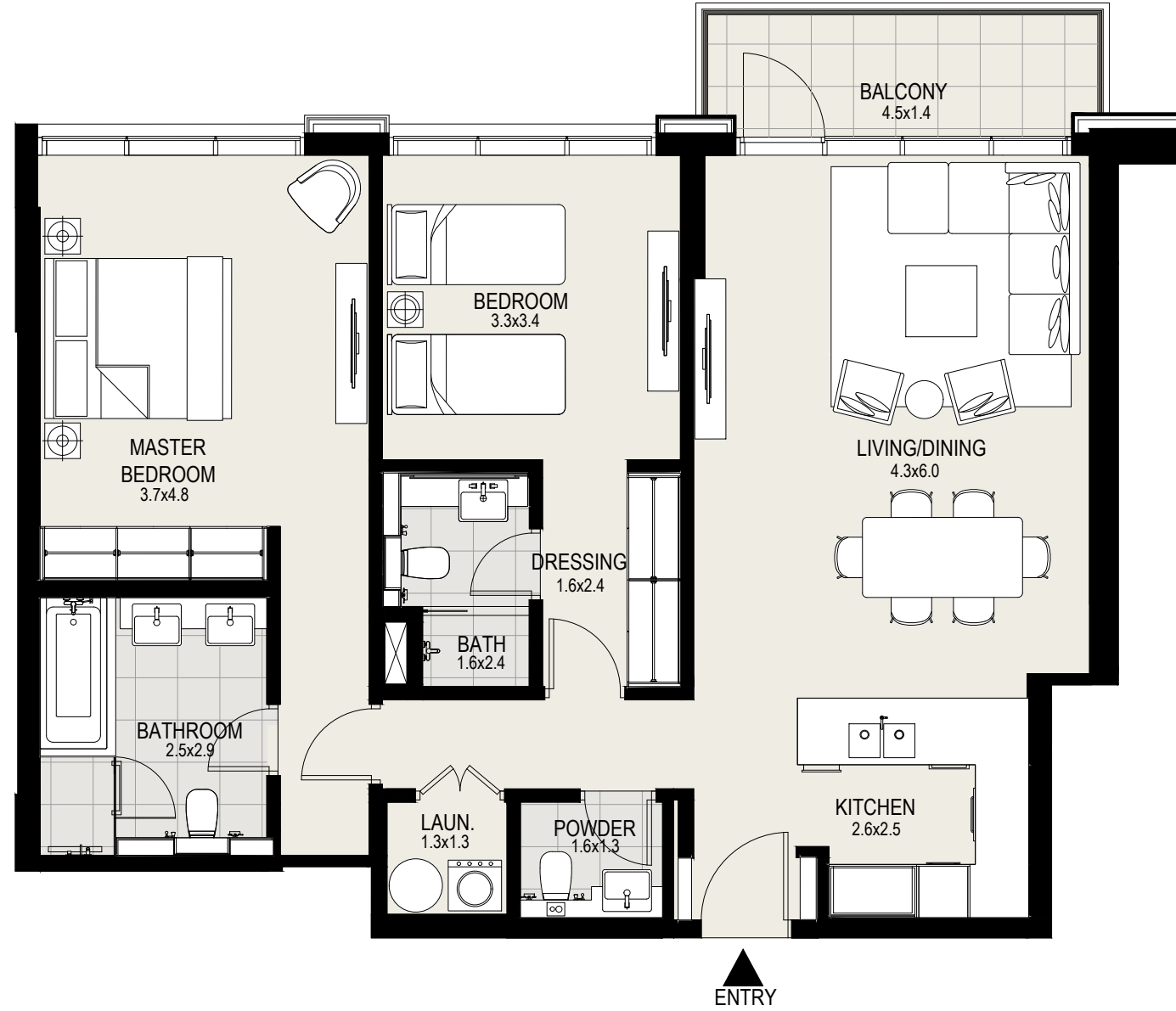
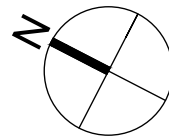
Suite Area : 1,100 sq. ft.

Balcony Area : 66 sq. ft.

Total Area : 1,166 sq. ft.



KEY PLAN



DISCLAIMER: All measurements, dimensions, coordinates and drawings given in the Property (Site/Floor) Plans are approximate and provided only for the purpose of illustration, information and general guidance as such drawings are not to scale. All the floor/site plans including concerned plot/room/swimming pool sizes, specifications, locations and orientations shown have been taken from concept designs prior to the actual development/construction and therefore their accuracy in relation to actual construction cannot be confirmed. Hence, we make no guarantee, warranty or representation as to the accuracy and completeness of the Property (Site/Floor) plan information as changes may be made during the development process, without notice. Always refer to latest IFC design available in the sales office for the most accurate representation of all construction details.



**MOHAMMED BIN RASHID  
AL MAKTOUN CITY**

DISTRICT ONE

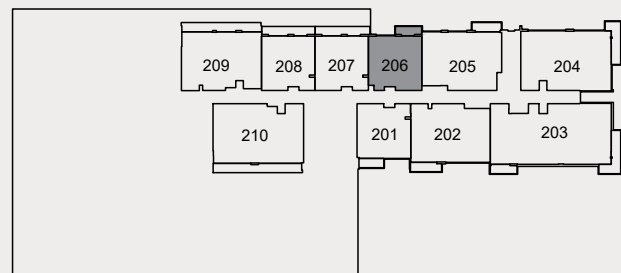
LEVEL

02

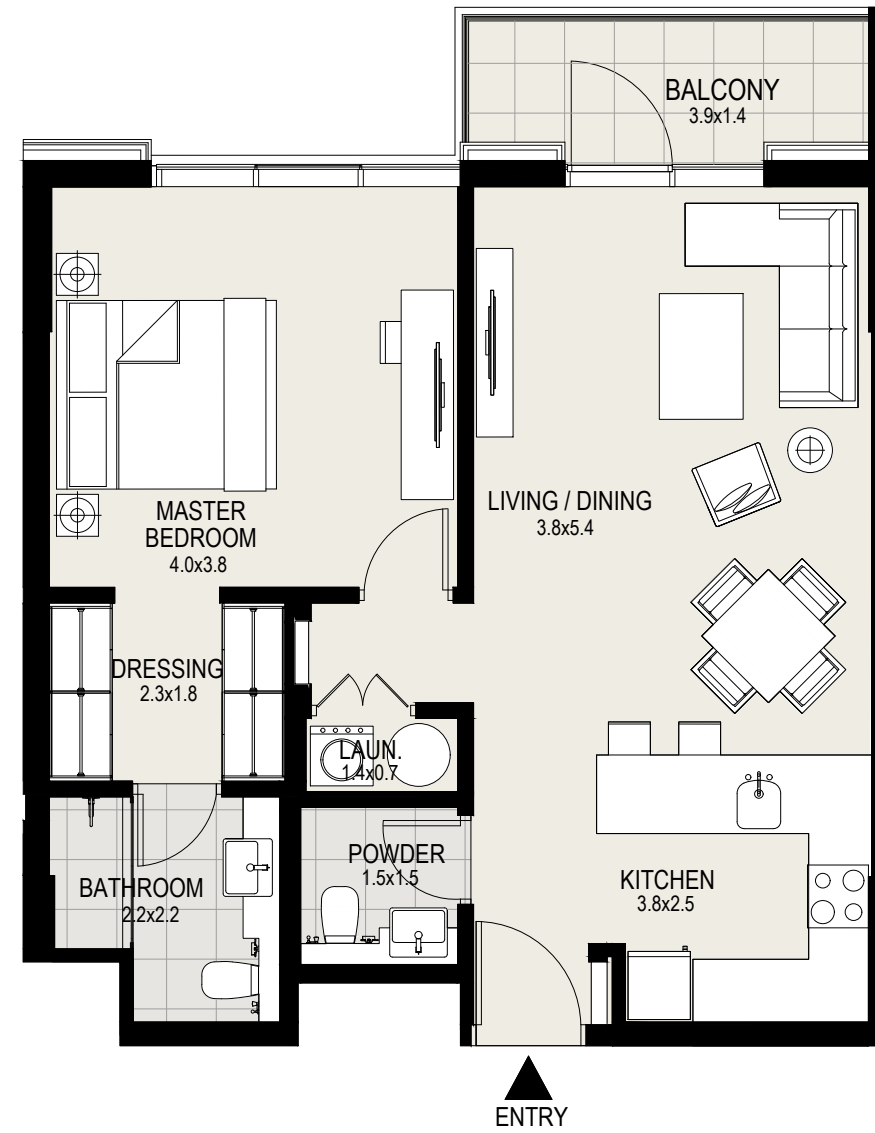
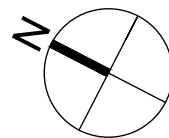
1 Bedroom

Unit 206, 2nd Floor

Suite Area :	703	sq. ft.
Balcony Area :	56	sq. ft.
Total Area :	759	sq. ft.



KEY PLAN



DISCLAIMER: All measurements, dimensions, coordinates and drawings given in the Property (Site/Floor) Plans are approximate and provided only for the purpose of illustration, information and general guidance as such drawings are not to scale. All the floor/site plans including concerned plot/room/swimming pool sizes, specifications, locations and orientations shown have been taken from concept designs prior to the actual development/construction and therefore their accuracy in relation to actual construction cannot be confirmed. Hence, we make no guarantee, warranty or representation as to the accuracy and completeness of the Property (Site/Floor) plan information as changes may be made during the development process, without notice. Always refer to latest IFC design available in the sales office for the most accurate representation of all construction details.



**MOHAMMED BIN RASHID  
AL MAKTOUN CITY**

DISTRICT ONE

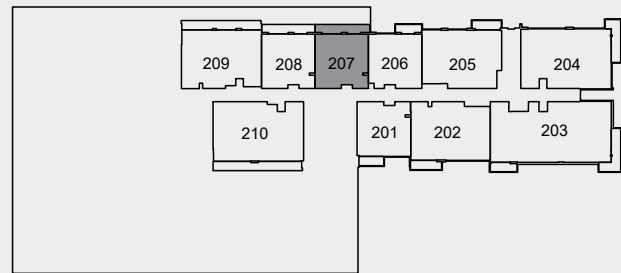
LEVEL

02

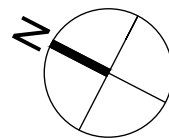
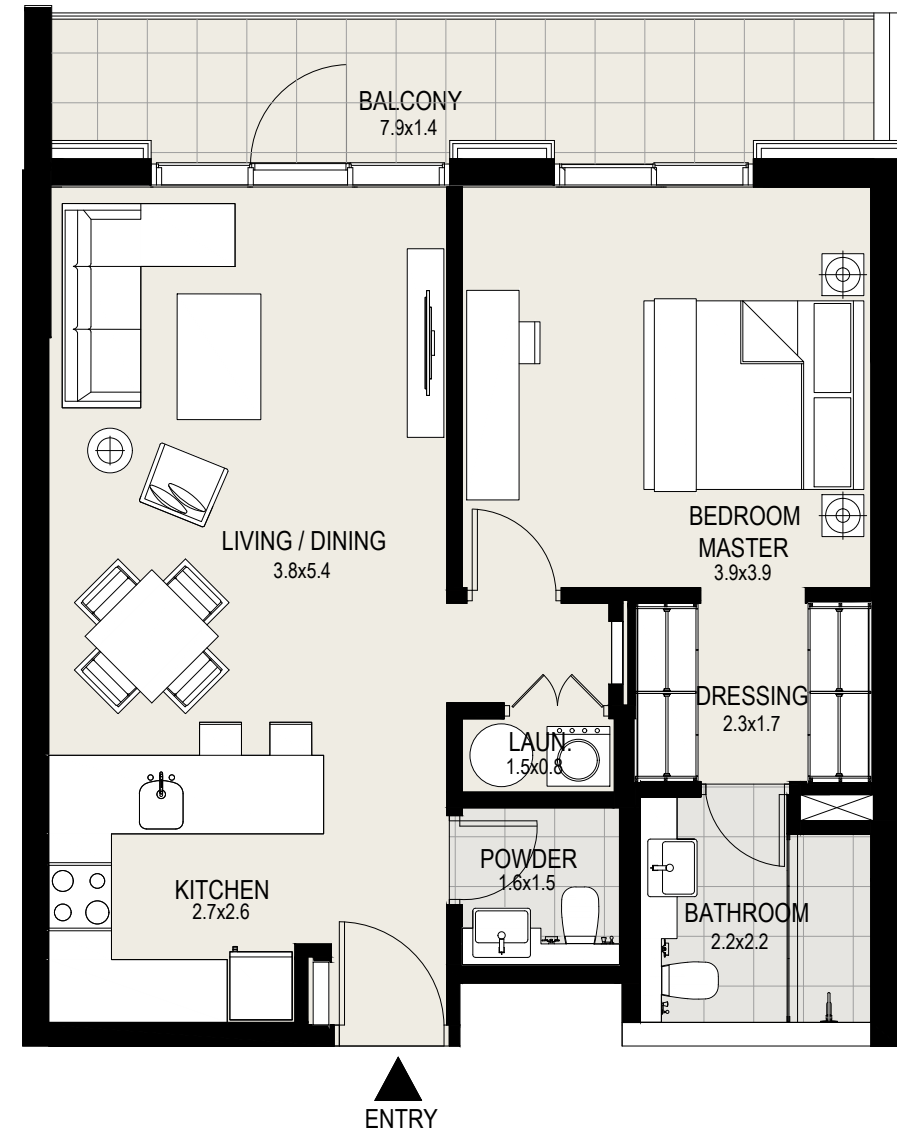
1 Bedroom

Unit 207, 2nd Floor

Suite Area :	707	sq. ft.
Balcony Area :	119	sq. ft.
Total Area :	826	sq. ft.



KEY PLAN



DISCLAIMER: All measurements, dimensions, coordinates and drawings given in the Property (Site/Floor) Plans are approximate and provided only for the purpose of illustration, information and general guidance as such drawings are not to scale. All the floor/site plans including concerned plot/room/swimming pool sizes, specifications, locations and orientations shown have been taken from concept designs prior to the actual development/construction and therefore their accuracy in relation to actual construction cannot be confirmed. Hence, we make no guarantee, warranty or representation as to the accuracy and completeness of the Property (Site/Floor) plan information as changes may be made during the development process, without notice. Always refer to latest IFC design available in the sales office for the most accurate representation of all construction details.



**MOHAMMED BIN RASHID  
AL MAKTOUN CITY**

DISTRICT ONE

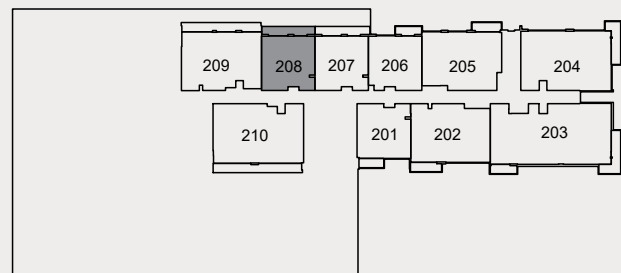
LEVEL

02

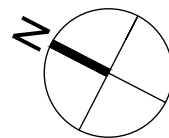
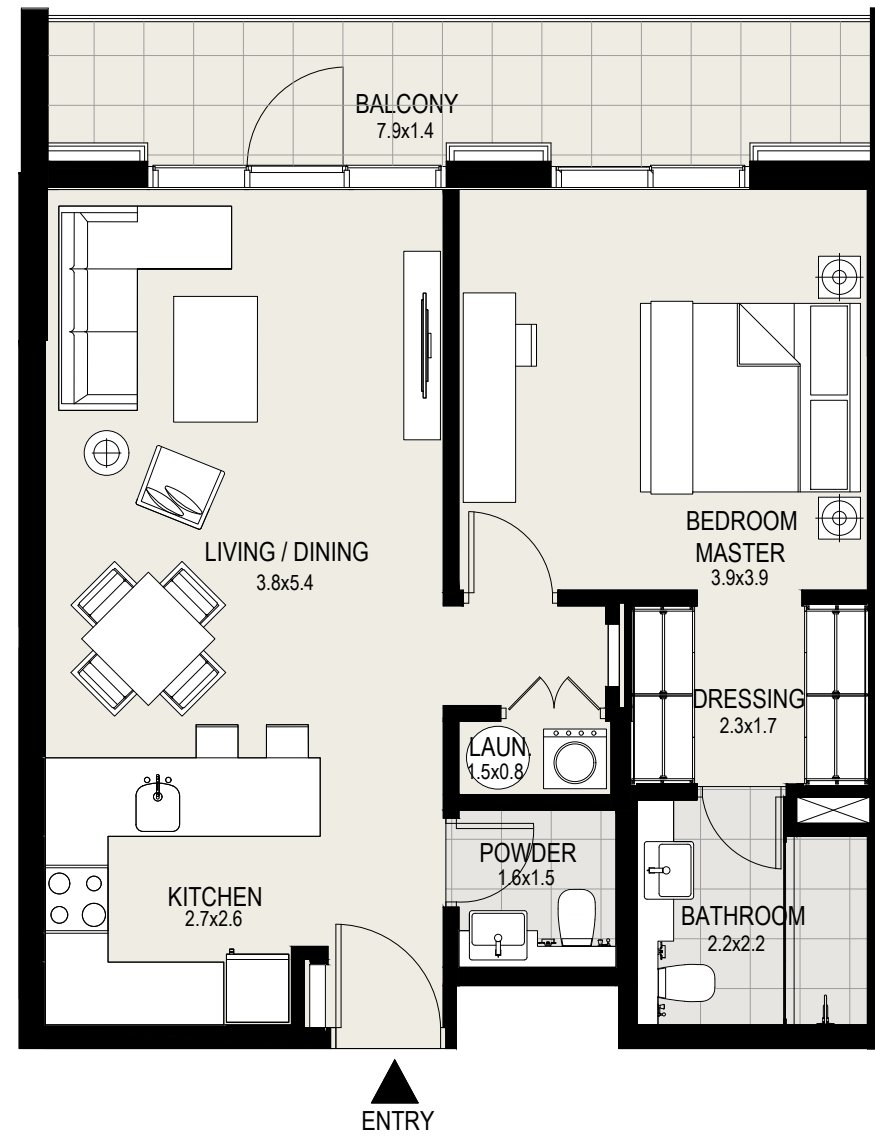
1 Bedroom

Unit 208, 2nd Floor

Suite Area :	707	sq. ft.
Balcony Area :	116	sq. ft.
Total Area :	823	sq. ft.



KEY PLAN



DISCLAIMER: All measurements, dimensions, coordinates and drawings given in the Property (Site/Floor) Plans are approximate and provided only for the purpose of illustration, information and general guidance as such drawings are not to scale. All the floor/site plans including concerned plot/room/swimming pool sizes, specifications, locations and orientations shown have been taken from concept designs prior to the actual development/construction and therefore their accuracy in relation to actual construction cannot be confirmed. Hence, we make no guarantee, warranty or representation as to the accuracy and completeness of the Property (Site/Floor) plan information as changes may be made during the development process, without notice. Always refer to latest IFC design available in the sales office for the most accurate representation of all construction details.





**MOHAMMED BIN RASHID  
AL MAKTOUN CITY**

DISTRICT ONE

LEVEL

02

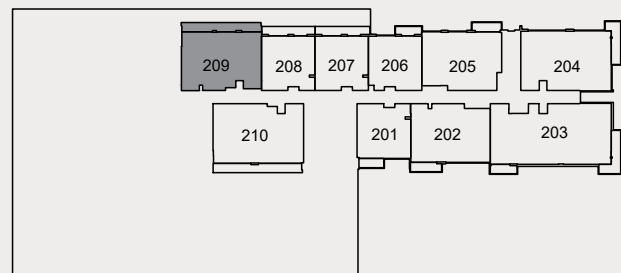
2 Bedroom

Unit 209, 2nd Floor

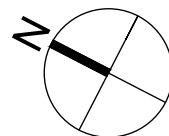
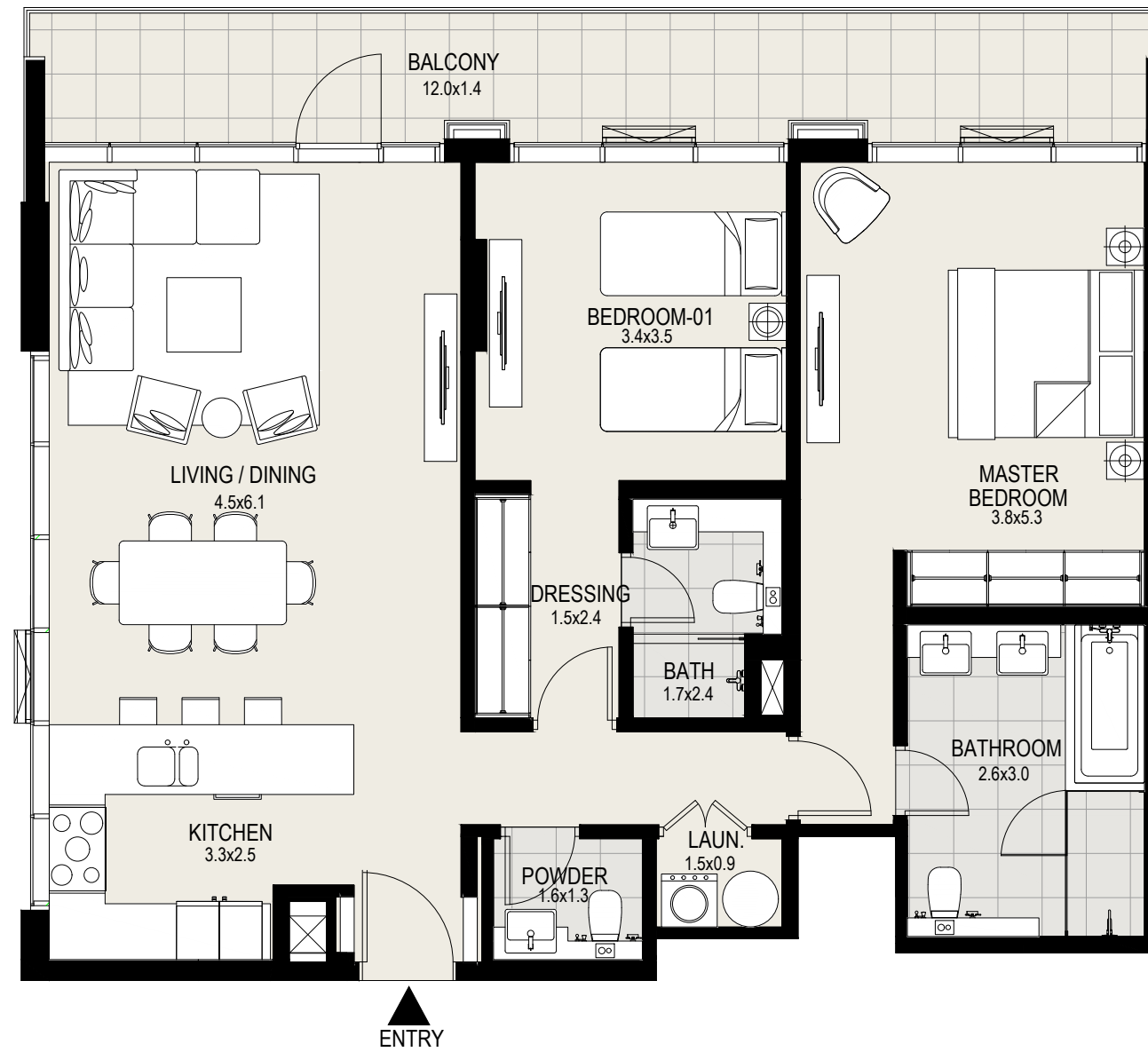
Suite Area : 1,117 sq. ft.

Balcony Area : 181 sq. ft.

Total Area : 1,298 sq. ft.



KEY PLAN



DISCLAIMER: All measurements, dimensions, coordinates and drawings given in the Property (Site/Floor) Plans are approximate and provided only for the purpose of illustration, information and general guidance as such drawings are not to scale. All the floor/site plans including concerned plot/room/swimming pool sizes, specifications, locations and orientations shown have been taken from concept designs prior to the actual development/construction and therefore their accuracy in relation to actual construction cannot be confirmed. Hence, we make no guarantee, warranty or representation as to the accuracy and completeness of the Property (Site/Floor) plan information as changes may be made during the development process, without notice. Always refer to latest IFC design available in the sales office for the most accurate representation of all construction details.



**MOHAMMED BIN RASHID  
AL MAKTOUN CITY**

DISTRICT ONE

LEVEL

02

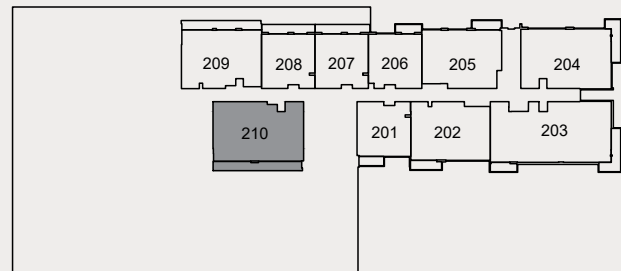
2 Bedroom

Unit 210, 2nd Floor

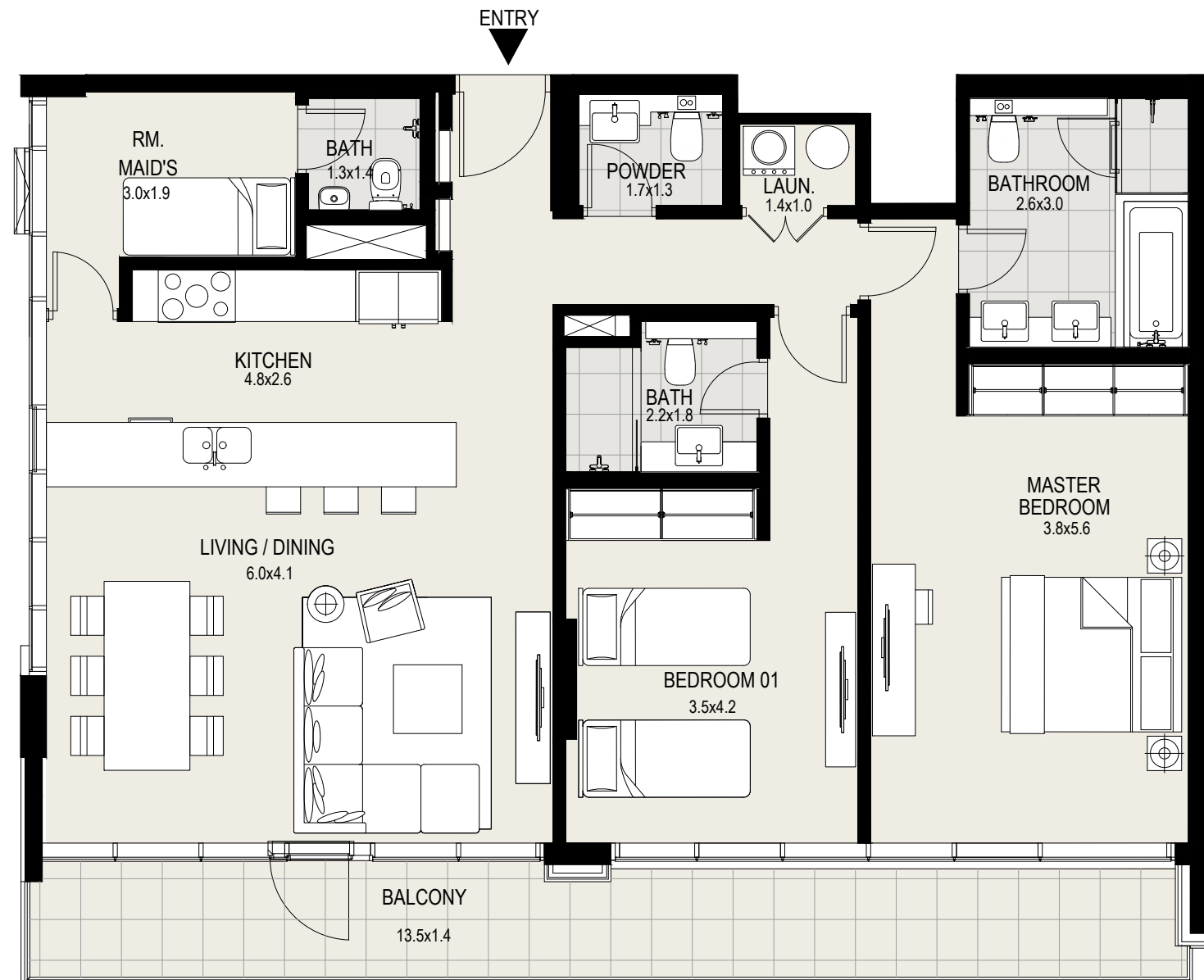
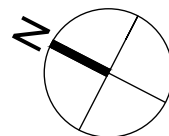
Suite Area : 1,293 sq. ft.

Balcony Area : 202 sq. ft.

Total Area : 1,495 sq. ft.



KEY PLAN



DISCLAIMER: All measurements, dimensions, coordinates and drawings given in the Property (Site/Floor) Plans are approximate and provided only for the purpose of illustration, information and general guidance as such drawings are not to scale. All the floor/site plans including concerned plot/room/swimming pool sizes, specifications, locations and orientations shown have been taken from concept designs prior to the actual development/construction and therefore their accuracy in relation to actual construction cannot be confirmed. Hence, we make no guarantee, warranty or representation as to the accuracy and completeness of the Property (Site/Floor) plan information as changes may be made during the development process, without notice. Always refer to latest IFC design available in the sales office for the most accurate representation of all construction details.



**MOHAMMED BIN RASHID  
AL MAKTOUM CITY**

DISTRICT ONE

## LEVELS

03 - 06

### 1 Bedroom

Unit 301, 3rd Floor

Unit 401, 4th Floor

Unit 501, 5th Floor

Unit 601, 6th Floor

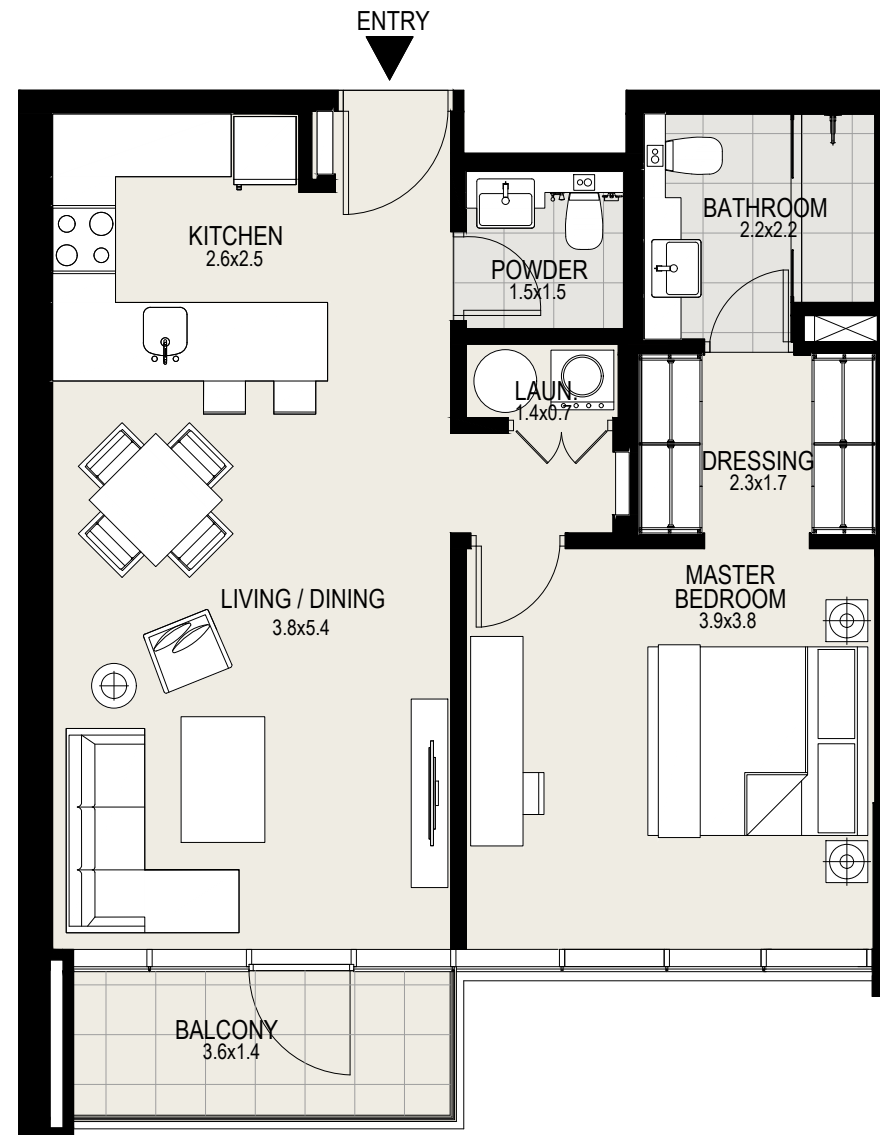
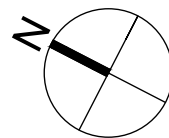
Suite Area : 712 sq. ft.

Balcony Area : 57 sq. ft.

Total Area : 769 sq. ft.



KEY PLAN



DISCLAIMER: All measurements, dimensions, coordinates and drawings given in the Property (Site/Floor) Plans are approximate and provided only for the purpose of illustration, information and general guidance as such drawings are not to scale. All the floor/site plans including concerned plot/room/swimming pool sizes, specifications, locations and orientations shown have been taken from concept designs prior to the actual development/construction and therefore their accuracy in relation to actual construction cannot be confirmed. Hence, we make no guarantee, warranty or representation as to the accuracy and completeness of the Property (Site/Floor) plan information as changes may be made during the development process, without notice. Always refer to latest IFC design available in the sales office for the most accurate representation of all construction details.



**MOHAMMED BIN RASHID  
AL MAKTOUM CITY**

DISTRICT ONE

## LEVELS

03 - 06

### 2 Bedroom

Unit 302, 3rd Floor

Unit 402, 4th Floor

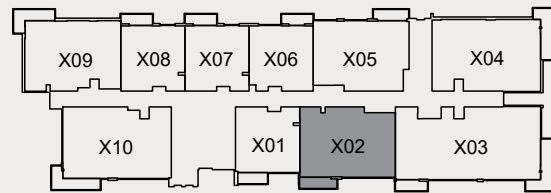
Unit 502, 5th Floor

Unit 602, 6th Floor

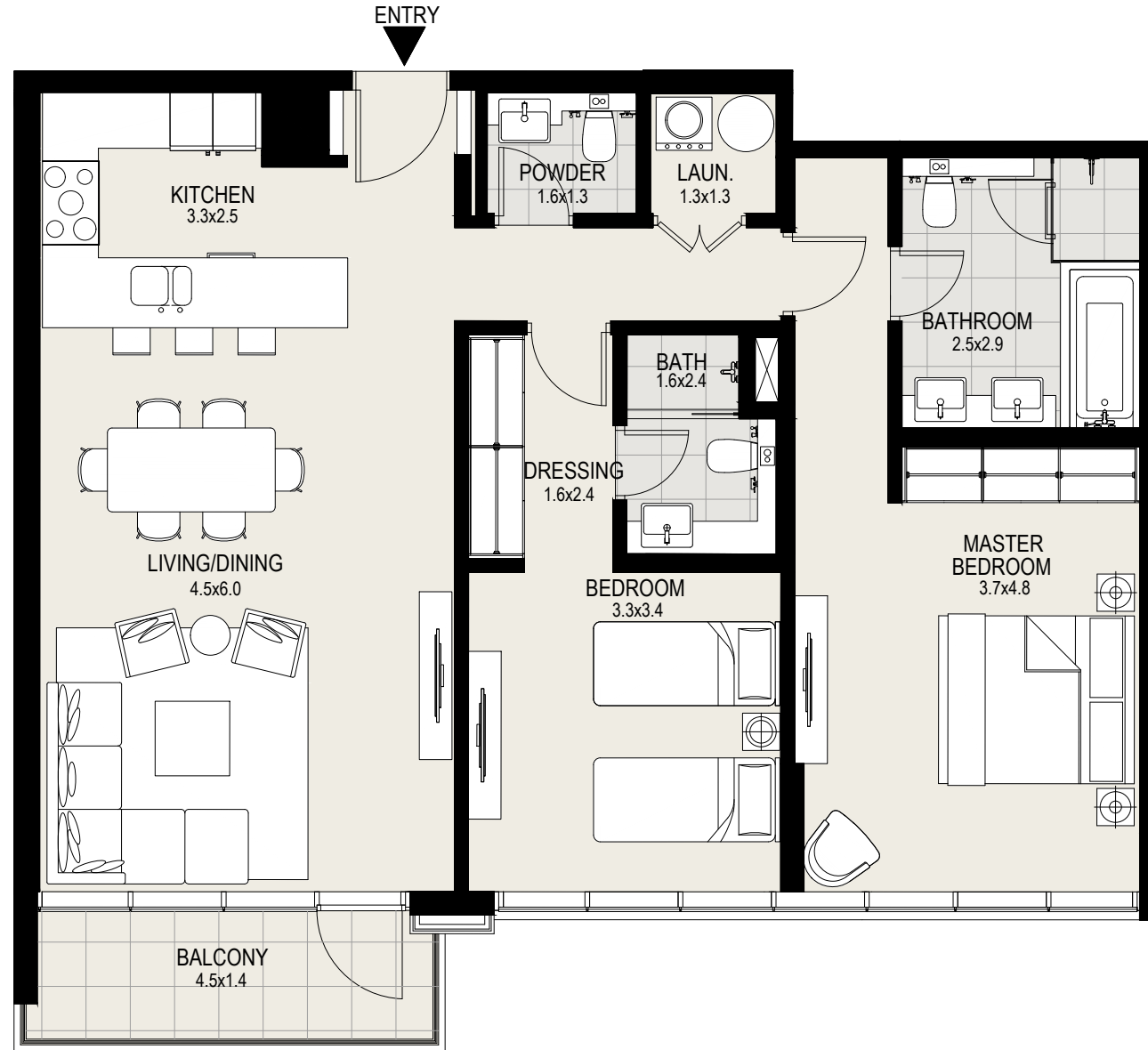
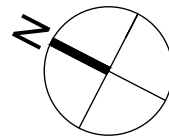
Suite Area : 1,114 sq. ft.

Balcony Area : 70 sq. ft.

Total Area : 1,184 sq. ft.



KEY PLAN



DISCLAIMER: All measurements, dimensions, coordinates and drawings given in the Property (Site/Floor) Plans are approximate and provided only for the purpose of illustration, information and general guidance as such drawings are not to scale. All the floor/site plans including concerned plot/room/swimming pool sizes, specifications, locations and orientations shown have been taken from concept designs prior to the actual development/construction and therefore their accuracy in relation to actual construction cannot be confirmed. Hence, we make no guarantee, warranty or representation as to the accuracy and completeness of the Property (Site/Floor) plan information as changes may be made during the development process, without notice. Always refer to latest IFC design available in the sales office for the most accurate representation of all construction details.



**MOHAMMED BIN RASHID  
AL MAKTOUM CITY**

DISTRICT ONE

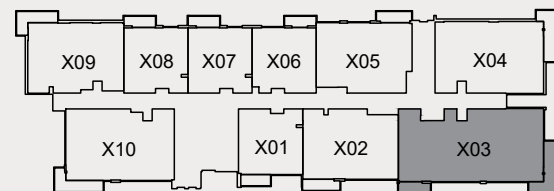
# LEVELS

03 - 06

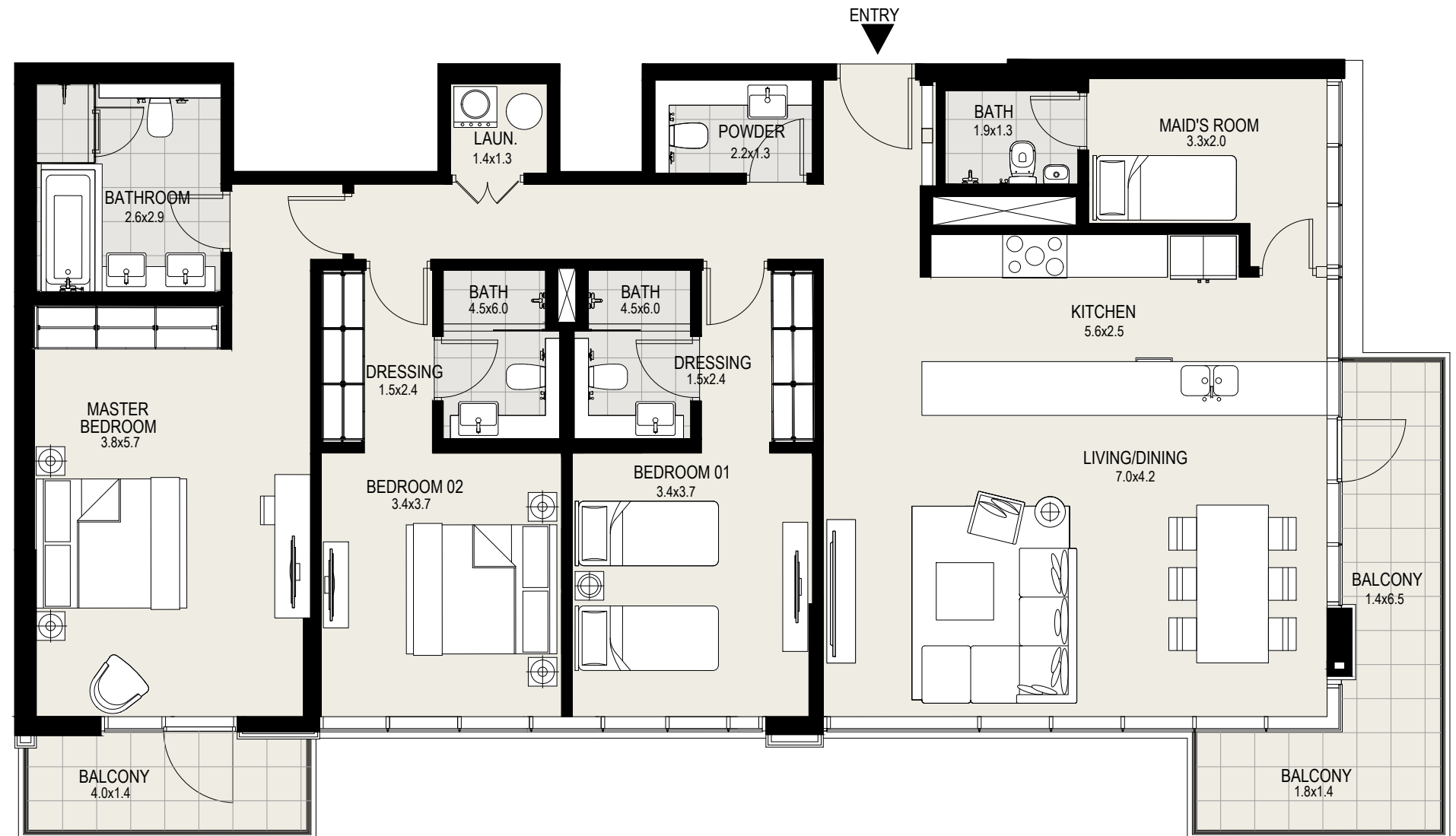
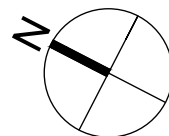
## 3 Bedroom

Unit 303, 3rd Floor  
Unit 403, 4th Floor  
Unit 503, 5th Floor  
Unit 603, 6th Floor

Suite Area : 1,730 sq. ft.  
Balcony Area : 187 sq. ft.  
Total Area : 1,917 sq. ft.



KEY PLAN



DISCLAIMER: All measurements, dimensions, coordinates and drawings given in the Property (Site/Floor) Plans are approximate and provided only for the purpose of illustration, information and general guidance as such drawings are not to scale. All the floor/site plans including concerned plot/room/swimming pool sizes, specifications, locations and orientations shown have been taken from concept designs prior to the actual development/construction and therefore their accuracy in relation to actual construction cannot be confirmed. Hence, we make no guarantee, warranty or representation as to the accuracy and completeness of the Property (Site/Floor) plan information as changes may be made during the development process, without notice. Always refer to latest IFC design available in the sales office for the most accurate representation of all construction details.



**MOHAMMED BIN RASHID  
AL MAKTOUM CITY**

DISTRICT ONE

## LEVELS

03 - 06

### 2 Bedroom

Unit 304, 3rd Floor

Unit 404, 4th Floor

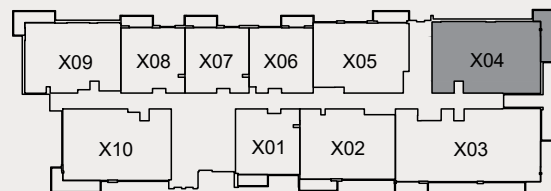
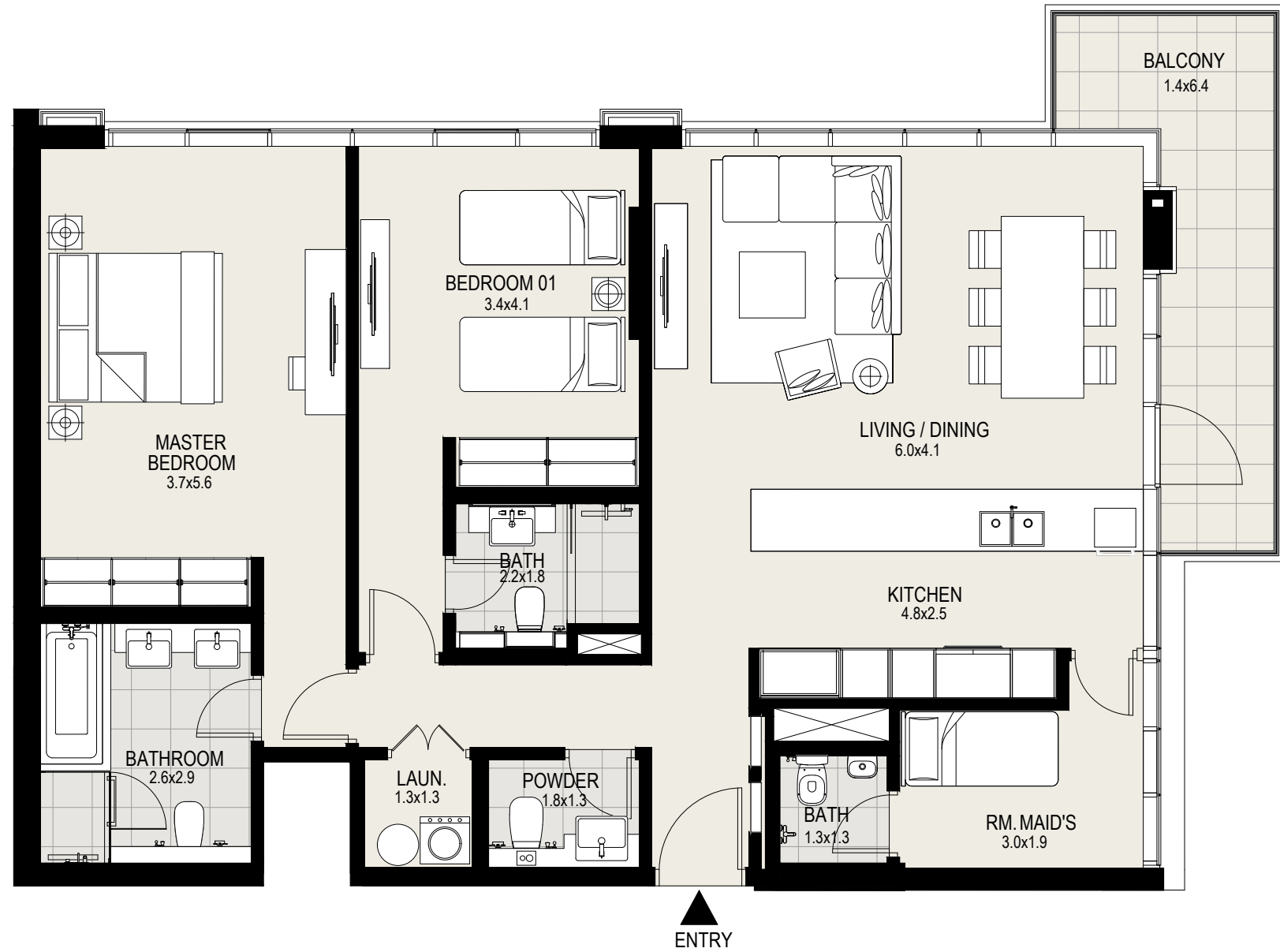
Unit 504, 5th Floor

Unit 604, 6th Floor

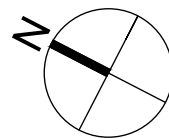
Suite Area : 1,303 sq. ft.

Balcony Area : 113 sq. ft.

Total Area : 1,416 sq. ft.



KEY PLAN



DISCLAIMER: All measurements, dimensions, coordinates and drawings given in the Property (Site/Floor) Plans are approximate and provided only for the purpose of illustration, information and general guidance as such drawings are not to scale. All the floor/site plans including concerned plot/room/swimming pool sizes, specifications, locations and orientations shown have been taken from concept designs prior to the actual development/construction and therefore their accuracy in relation to actual construction cannot be confirmed. Hence, we make no guarantee, warranty or representation as to the accuracy and completeness of the Property (Site/Floor) plan information as changes may be made during the development process, without notice. Always refer to latest IFC design available in the sales office for the most accurate representation of all construction details.



**MOHAMMED BIN RASHID  
AL MAKTOUM CITY**

DISTRICT ONE

## LEVELS

03 - 06

### 2 Bedroom

Unit 305, 3rd Floor

Unit 405, 4th Floor

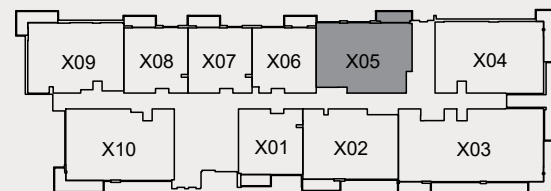
Unit 505, 5th Floor

Unit 605, 6th Floor

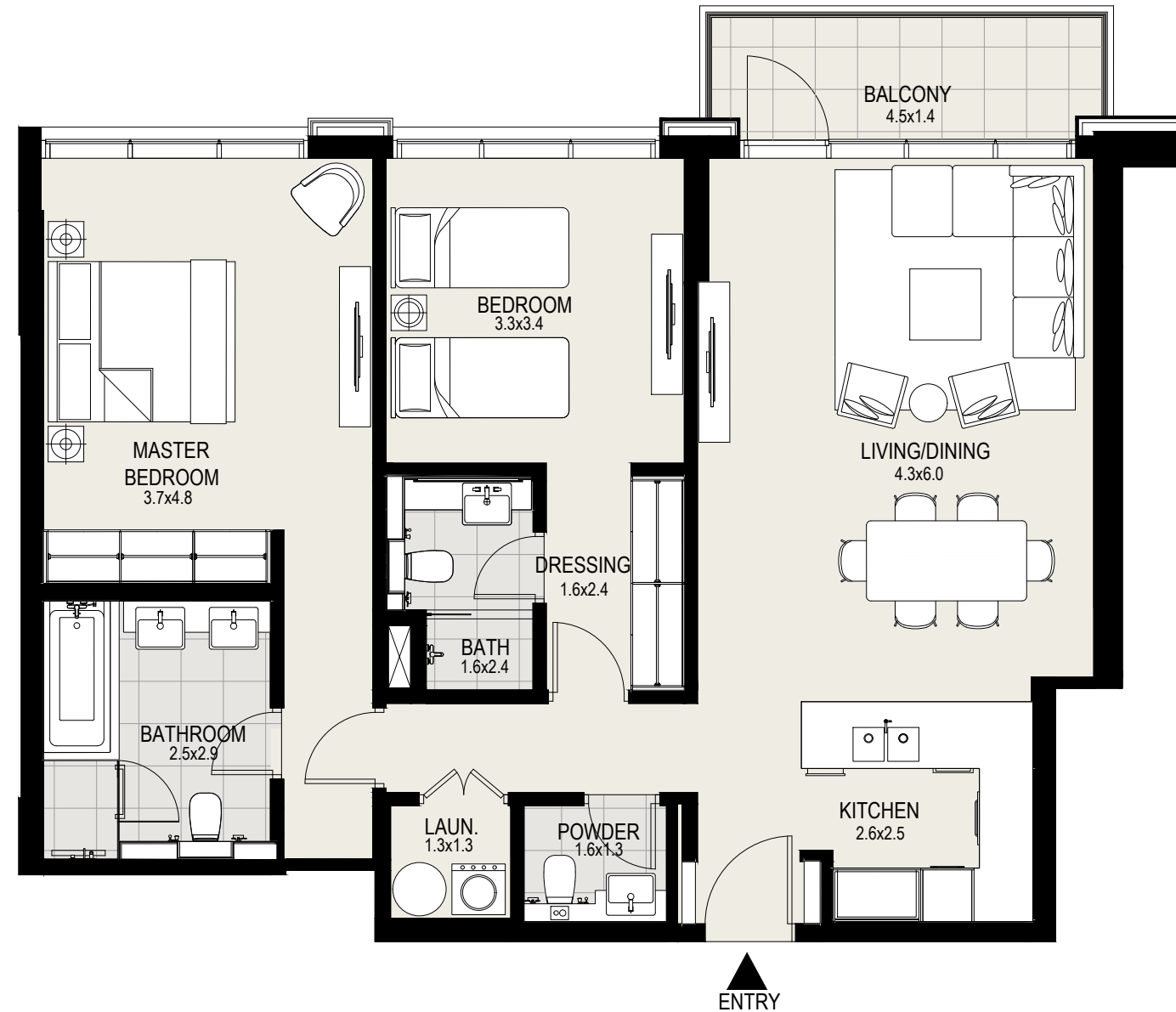
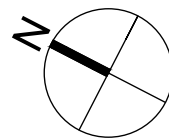
Suite Area : 1,100 sq. ft.

Balcony Area : 66 sq. ft.

Total Area : 1,166 sq. ft.



KEY PLAN



DISCLAIMER: All measurements, dimensions, coordinates and drawings given in the Property (Site/Floor) Plans are approximate and provided only for the purpose of illustration, information and general guidance as such drawings are not to scale. All the floor/site plans including concerned plot/room/swimming pool sizes, specifications, locations and orientations shown have been taken from concept designs prior to the actual development/construction and therefore their accuracy in relation to actual construction cannot be confirmed. Hence, we make no guarantee, warranty or representation as to the accuracy and completeness of the Property (Site/Floor) plan information as changes may be made during the development process, without notice. Always refer to latest IFC design available in the sales office for the most accurate representation of all construction details.



**MOHAMMED BIN RASHID  
AL MAKTOUN CITY**

DISTRICT ONE

## LEVELS

03 - 06

### 1 Bedroom

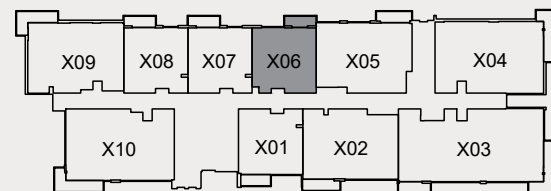
Unit 306, 3rd Floor

Unit 406, 4th Floor

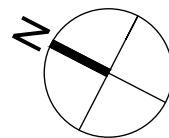
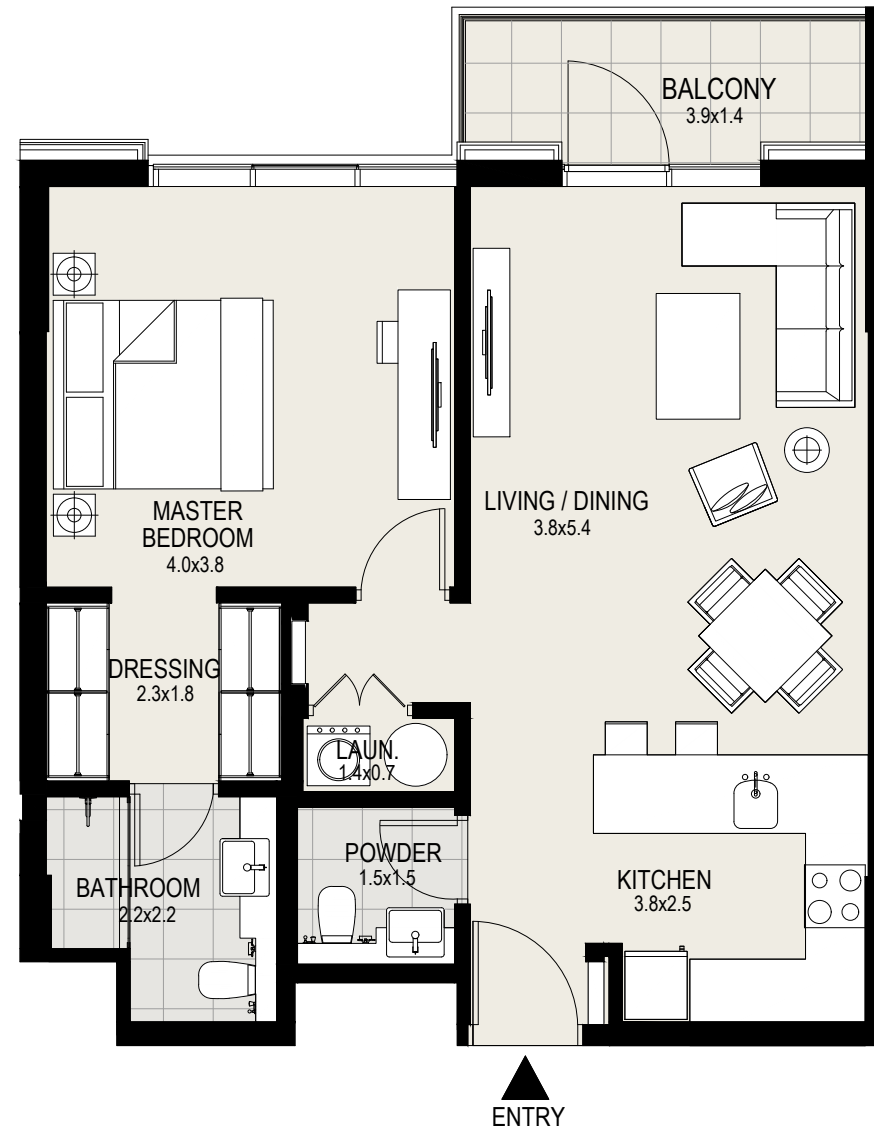
Unit 506, 5th Floor

Unit 606, 6th Floor

Suite Area :	703	sq. ft.
Balcony Area :	56	sq. ft.
Total Area :	759	sq. ft.



KEY PLAN



DISCLAIMER: All measurements, dimensions, coordinates and drawings given in the Property (Site/Floor) Plans are approximate and provided only for the purpose of illustration, information and general guidance as such drawings are not to scale. All the floor/site plans including concerned plot/room/swimming pool sizes, specifications, locations and orientations shown have been taken from concept designs prior to the actual development/construction and therefore their accuracy in relation to actual construction cannot be confirmed. Hence, we make no guarantee, warranty or representation as to the accuracy and completeness of the Property (Site/Floor) plan information as changes may be made during the development process, without notice. Always refer to latest IFC design available in the sales office for the most accurate representation of all construction details.





**MOHAMMED BIN RASHID  
AL MAKTOUN CITY**

DISTRICT ONE

## LEVELS

03 - 06

### 1 Bedroom

Unit 307, 3rd Floor

Unit 407, 4th Floor

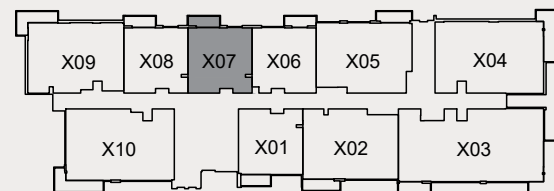
Unit 507, 5th Floor

Unit 607, 6th Floor

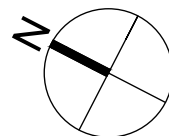
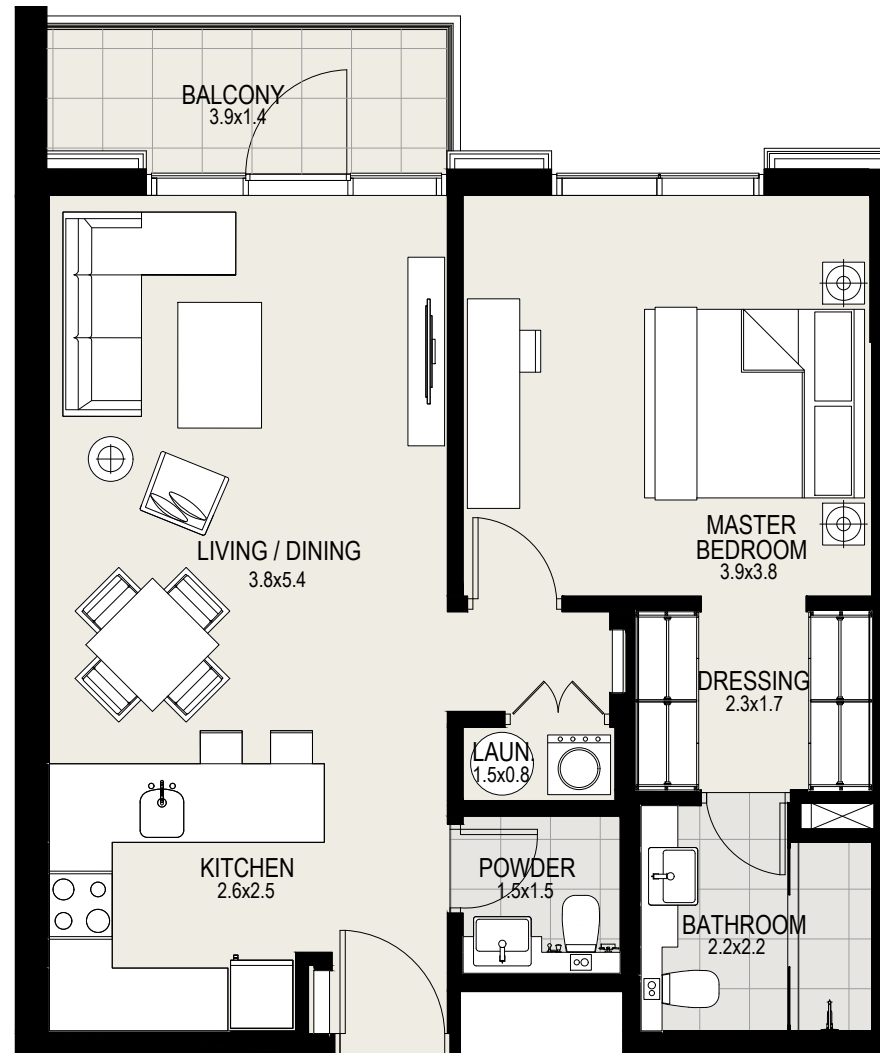
Suite Area : 707 sq. ft.

Balcony Area : 58 sq. ft.

Total Area : 765 sq. ft.



KEY PLAN



DISCLAIMER: All measurements, dimensions, coordinates and drawings given in the Property (Site/Floor) Plans are approximate and provided only for the purpose of illustration, information and general guidance as such drawings are not to scale. All the floor/site plans including concerned plot/room/swimming pool sizes, specifications, locations and orientations shown have been taken from concept designs prior to the actual development/construction and therefore their accuracy in relation to actual construction cannot be confirmed. Hence, we make no guarantee, warranty or representation as to the accuracy and completeness of the Property (Site/Floor) plan information as changes may be made during the development process, without notice. Always refer to latest IFC design available in the sales office for the most accurate representation of all construction details.



**MOHAMMED BIN RASHID  
AL MAKTOUM CITY**

DISTRICT ONE

## LEVELS

03 - 06

### 1 Bedroom

Unit 308, 3rd Floor

Unit 408, 4th Floor

Unit 508, 5th Floor

Unit 608, 6th Floor

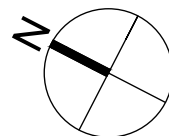
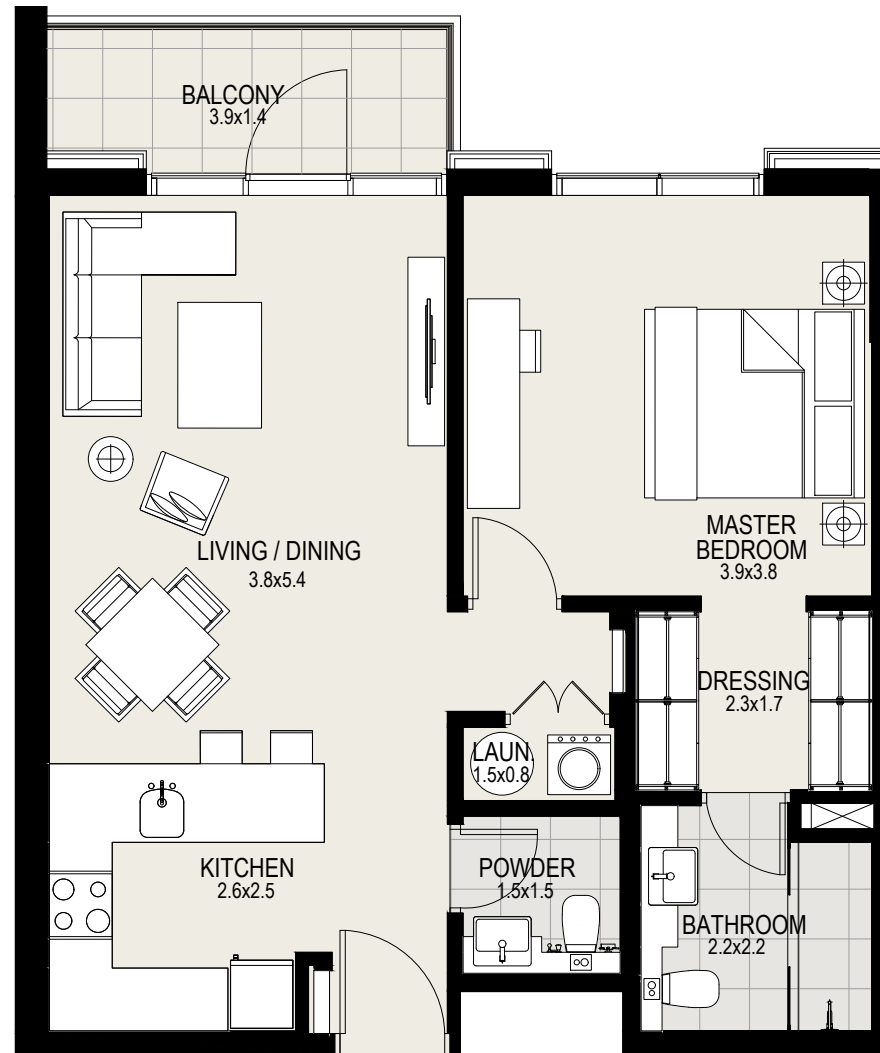
Suite Area : 707 sq. ft.

Balcony Area : 58 sq. ft.

Total Area : 765 sq. ft.



KEY PLAN



DISCLAIMER: All measurements, dimensions, coordinates and drawings given in the Property (Site/Floor) Plans are approximate and provided only for the purpose of illustration, information and general guidance as such drawings are not to scale. All the floor/site plans including concerned plot/room/swimming pool sizes, specifications, locations and orientations shown have been taken from concept designs prior to the actual development/construction and therefore their accuracy in relation to actual construction cannot be confirmed. Hence, we make no guarantee, warranty or representation as to the accuracy and completeness of the Property (Site/Floor) plan information as changes may be made during the development process, without notice. Always refer to latest IFC design available in the sales office for the most accurate representation of all construction details.



**MOHAMMED BIN RASHID  
AL MAKTOUM CITY**

DISTRICT ONE

LEVEL

03

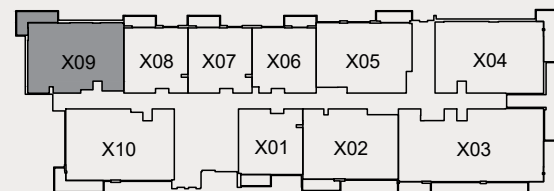
2 Bedroom

Unit 309, 3rd Floor

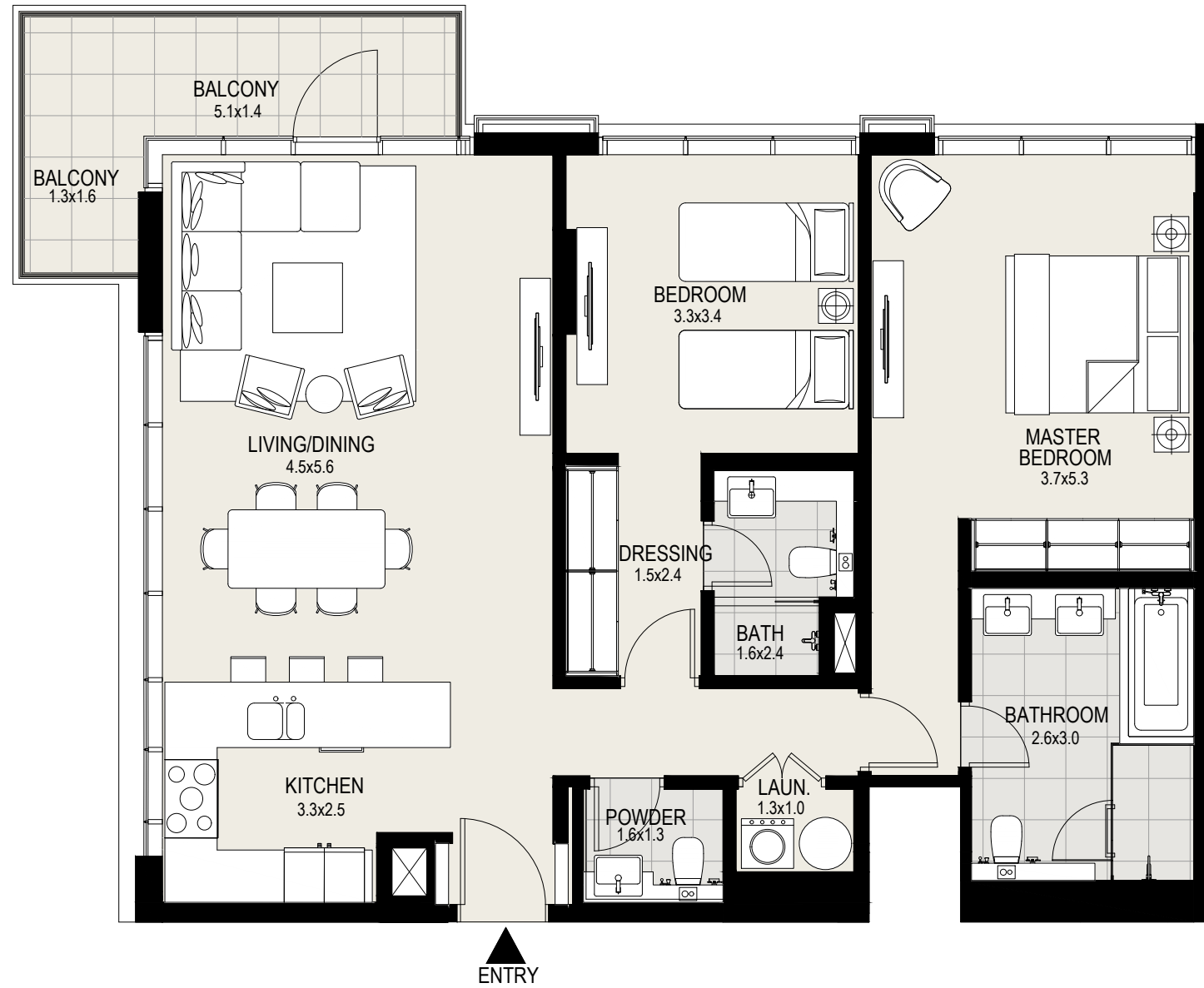
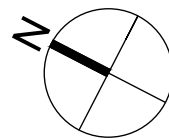
Suite Area : 1,117 sq. ft.

Balcony Area : 101 sq. ft.

Total Area : 1,218 sq. ft.



KEY PLAN



DISCLAIMER: All measurements, dimensions, coordinates and drawings given in the Property (Site/Floor) Plans are approximate and provided only for the purpose of illustration, information and general guidance as such drawings are not to scale. All the floor/site plans including concerned plot/room/swimming pool sizes, specifications, locations and orientations shown have been taken from concept designs prior to the actual development/construction and therefore their accuracy in relation to actual construction cannot be confirmed. Hence, we make no guarantee, warranty or representation as to the accuracy and completeness of the Property (Site/Floor) plan information as changes may be made during the development process, without notice. Always refer to latest IFC design available in the sales office for the most accurate representation of all construction details.



**MOHAMMED BIN RASHID  
AL MAKTOUM CITY**

DISTRICT ONE

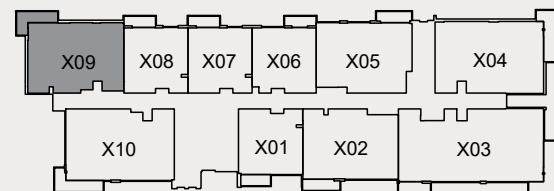
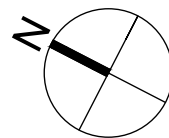
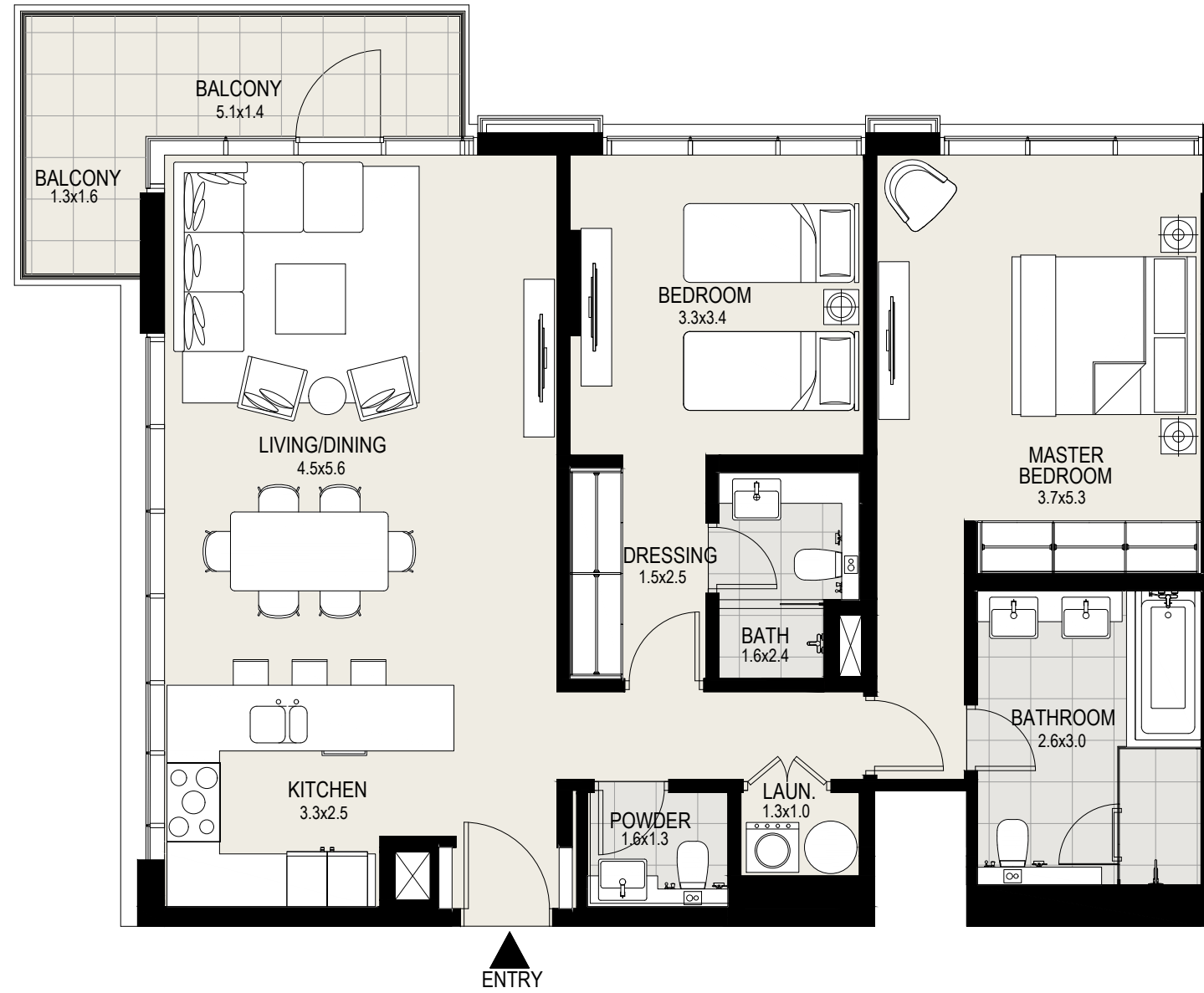
## LEVELS

04 - 06

### 2 Bedroom

Unit 409, 4th Floor  
Unit 509, 5th Floor  
Unit 609, 6th Floor

Suite Area :	1,117 sq. ft.
Balcony Area :	104 sq. ft.
Total Area :	1,221 sq. ft.



KEY PLAN

DISCLAIMER: All measurements, dimensions, coordinates and drawings given in the Property (Site/Floor) Plans are approximate and provided only for the purpose of illustration, information and general guidance as such drawings are not to scale. All the floor/site plans including concerned plot/room/swimming pool sizes, specifications, locations and orientations shown have been taken from concept designs prior to the actual development/construction and therefore their accuracy in relation to actual construction cannot be confirmed. Hence, we make no guarantee, warranty or representation as to the accuracy and completeness of the Property (Site/Floor) plan information as changes may be made during the development process, without notice. Always refer to latest IFC design available in the sales office for the most accurate representation of all construction details.



**MOHAMMED BIN RASHID  
AL MAKTOUM CITY**

DISTRICT ONE

## LEVELS

03 - 06

### 2 Bedroom

Unit 310, 3rd Floor

Unit 410, 4th Floor

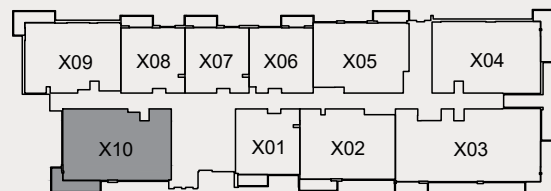
Unit 510, 5th Floor

Unit 610, 6th Floor

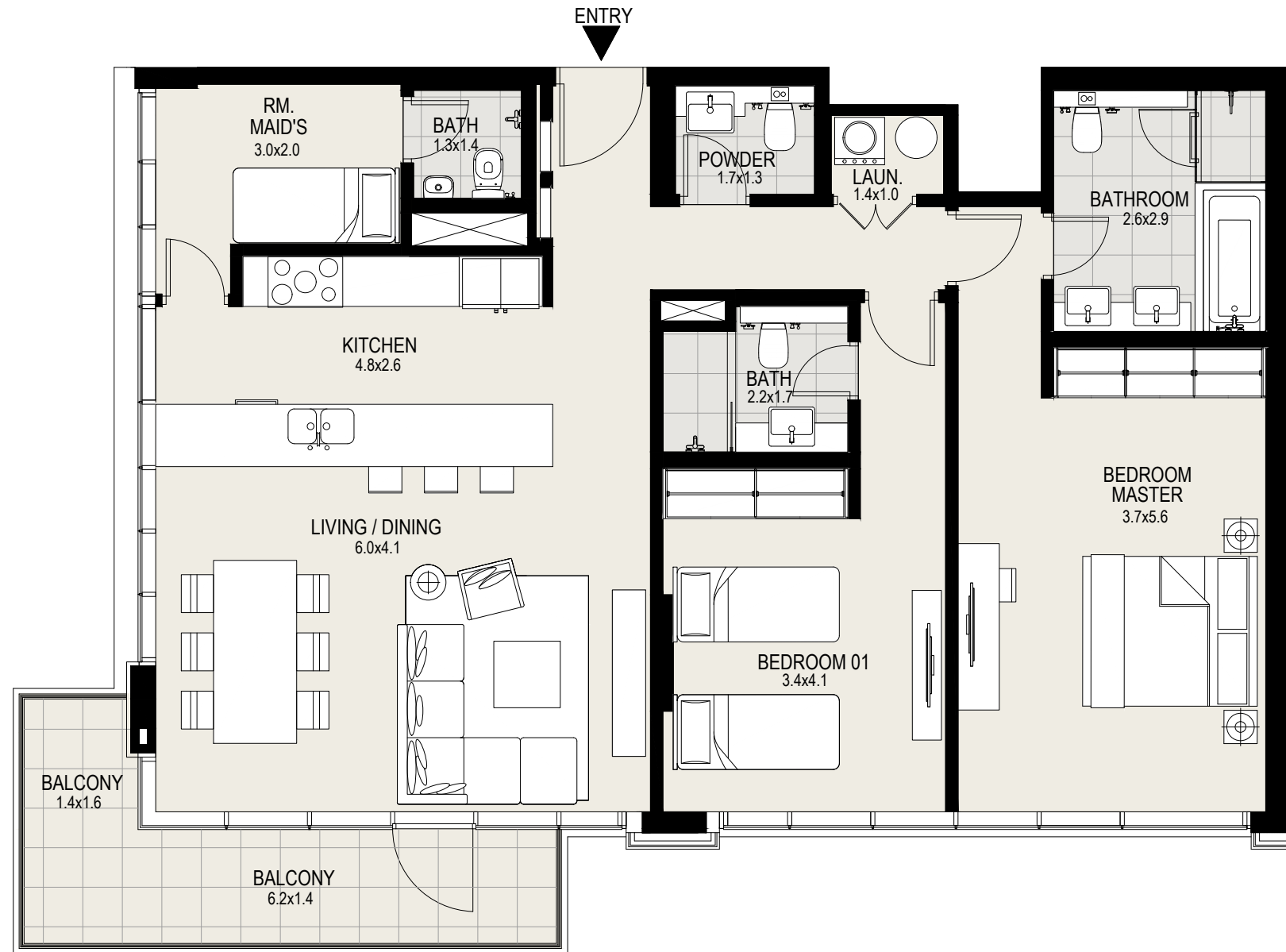
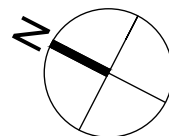
Suite Area : 1,293 sq. ft.

Balcony Area : 117 sq. ft.

Total Area : 1,410 sq. ft.



KEY PLAN



DISCLAIMER: All measurements, dimensions, coordinates and drawings given in the Property (Site/Floor) Plans are approximate and provided only for the purpose of illustration, information and general guidance as such drawings are not to scale. All the floor/site plans including concerned plot/room/swimming pool sizes, specifications, locations and orientations shown have been taken from concept designs prior to the actual development/construction and therefore their accuracy in relation to actual construction cannot be confirmed. Hence, we make no guarantee, warranty or representation as to the accuracy and completeness of the Property (Site/Floor) plan information as changes may be made during the development process, without notice. Always refer to latest IFC design available in the sales office for the most accurate representation of all construction details.