



# RESIDENCES

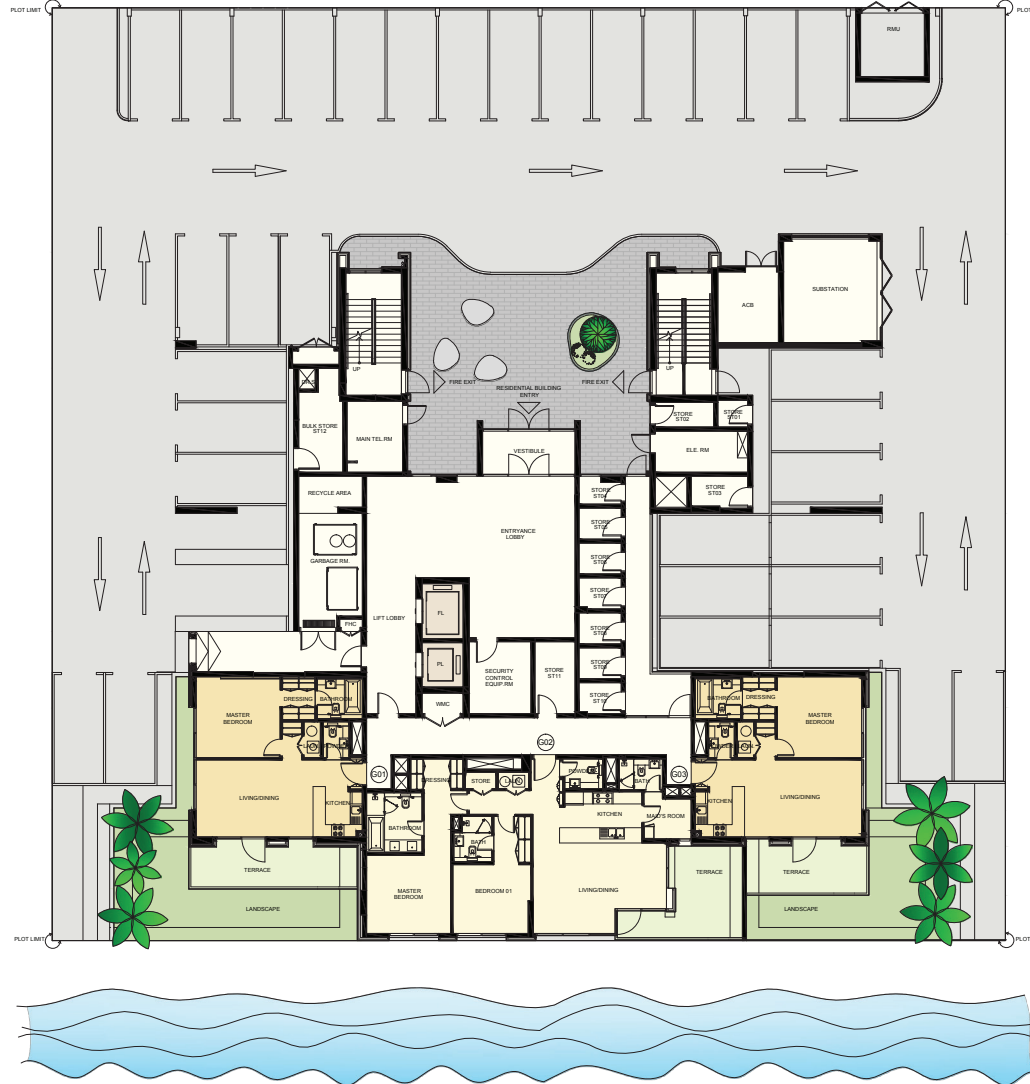
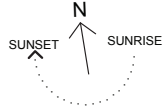
DISTRICT1.COM



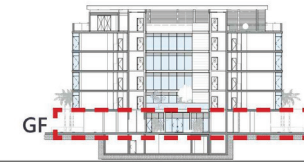
# G+4 Apartments

## Ground Floor

1 and 2 Bedroom Apartments



**MOHAMMED BIN RASHID  
AL MAKTOUM CITY**  
DISTRICT ONE



Key Section

**DISCLAIMER:** All measurements, dimensions, coordinates and drawings given as the Floor Plans in this literature are approximate and provided only for the purpose of marketing, illustration, information and general guidance as such drawings are not to scale. All the rooms, swimming pool, sizes, locations, orientations, dimensions, fixtures, fittings, finishes and specifications (including materials for, placement, size of rooms, windows, doors, balcony, furniture's, inbuilt wardrobe etc.) provided in the floor plans may vary as the same have been taken from concept designs prior to the actual development/construction and therefore their accuracy in relation to actual construction cannot be confirmed. Hence, we make no guarantee, warranty or representation as to the accuracy and completeness of the Floor plan information as changes may be made during the development process, without notice. Always refer to latest IFC design available in the sales office for the most accurate representation of all construction details



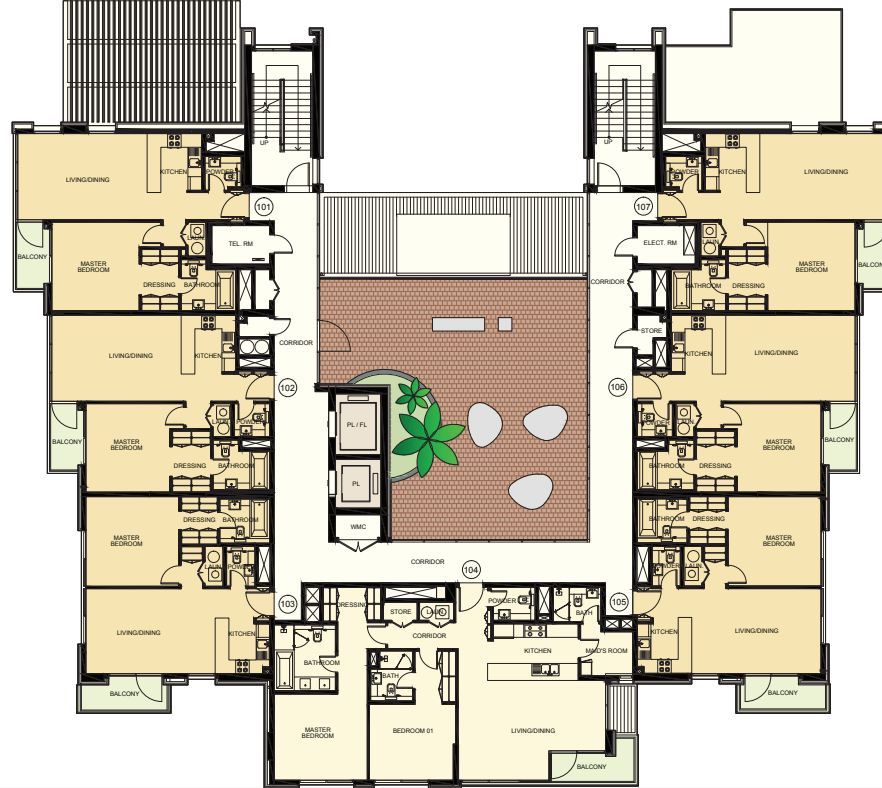
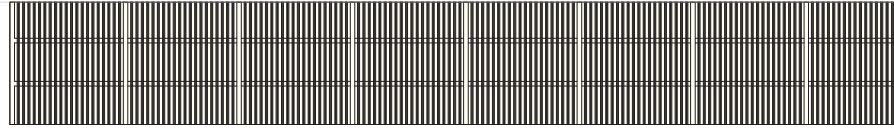
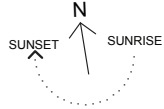
# G+4 Apartments

## 1st Floor

1 and 2 Bedroom Apartments



**MOHAMMED BIN RASHID  
AL MAKTOUM CITY**  
DISTRICT ONE



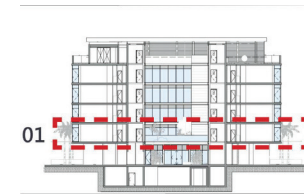
Direct beach views



Direct beach views



Direct beach views



Key Section

**DISCLAIMER:** All measurements, dimensions, coordinates and drawings given as the Floor Plans in this literature are approximate and provided only for the purpose of marketing, illustration, information and general guidance as such drawings are not to scale. All the rooms, swimming pool, sizes, locations, orientations, dimensions, fixtures, fittings, finishes and specifications (including materials for, placement, size of rooms, windows, doors, balcony, furniture's, inbuilt wardrobe etc.) provided in the floor plans may vary as the same have been taken from concept designs prior to the actual development/construction and therefore their accuracy in relation to actual construction cannot be confirmed. Hence, we make no guarantee, warranty or representation as to the accuracy and completeness of the Floor plan information as changes may be made during the development process, without notice. Always refer to latest IFC design available in the sales office for the most accurate representation of all construction details



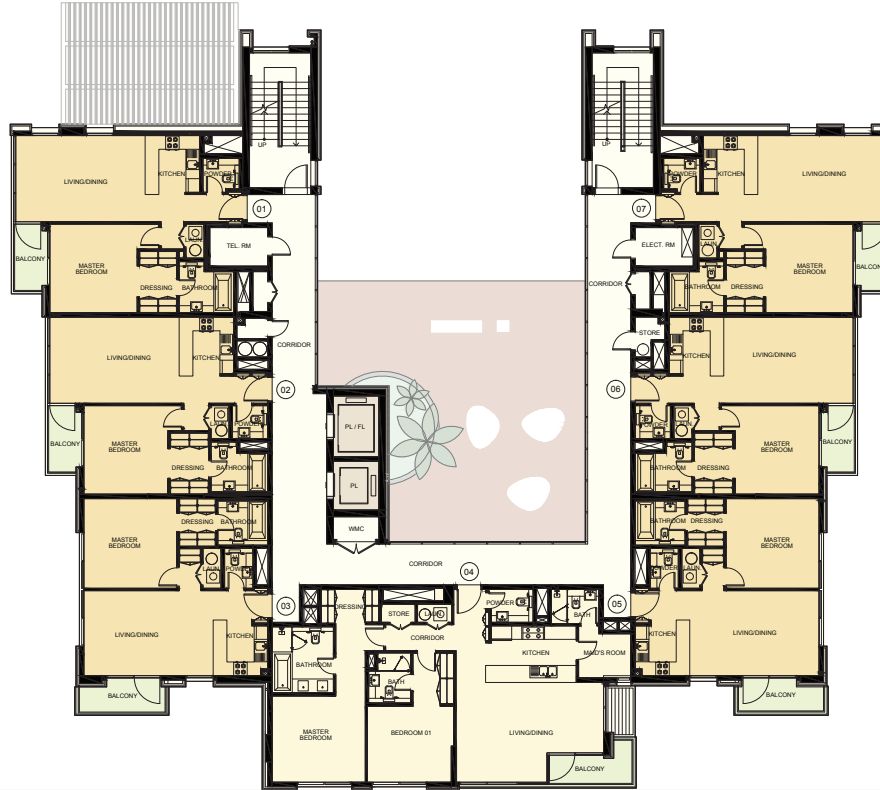
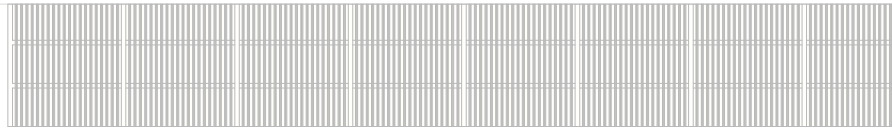
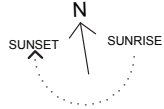
# G+4 Apartments

## Typical 2nd to 4th Floor

1 and 2 Bedroom Apartments



**MOHAMMED BIN RASHID  
AL MAKTOUM CITY**  
DISTRICT ONE



Direct beach views



Direct beach views



02-04



Key Section

Direct beach views

**DISCLAIMER:** All measurements, dimensions, coordinates and drawings given as the Floor Plans in this literature are approximate and provided only for the purpose of marketing, illustration, information and general guidance as such drawings are not to scale. All the rooms, swimming pool, sizes, locations, orientations, dimensions, fixtures, fittings, finishes and specifications (including materials for, placement, size of rooms, windows, doors, balcony, furniture's, inbuilt wardrobe etc.) provided in the floor plans may vary as the same have been taken from concept designs prior to the actual development/construction and therefore their accuracy in relation to actual construction cannot be confirmed. Hence, we make no guarantee, warranty or representation as to the accuracy and completeness of the Floor plan information as changes may be made during the development process, without notice. Always refer to latest IFC design available in the sales office for the most accurate representation of all construction details



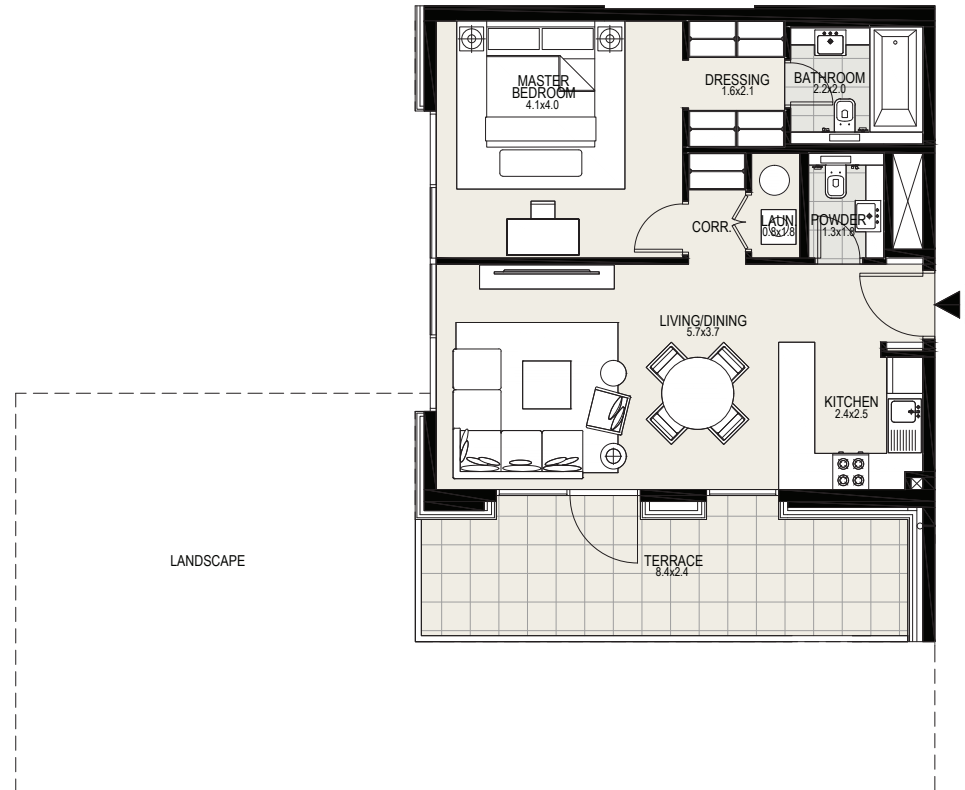
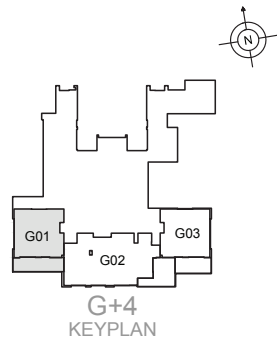
**MOHAMMED BIN RASHID  
AL MAKTOUM CITY**

**DISTRICT ONE**

**1 BEDROOM**

**UNIT G01 | GROUND FLOOR**

Suite Area	703 sq. ft
Terrace Area	216 sq. ft
Landscape Area	692 sq. ft
Total Area	1611 sq. ft



**DISCLAIMER:** All measurements, dimensions, coordinates and drawings given as the Floor Plans in this literature are approximate and provided only for the purpose of marketing, illustration, information and general guidance as such drawings are not to scale. All the rooms, swimming pool, sizes, locations, orientations, dimensions, fixtures, fittings, finishes and specifications (including materials for, placement, size of rooms, windows, doors, balcony, furniture's, inbuilt wardrobe etc.) provided in the floor plans may vary as the same have been taken from concept designs prior to the actual development/construction and therefore their accuracy in relation to actual construction cannot be confirmed. Hence, we make no guarantee, warranty or representation as to the accuracy and completeness of the Floor plan information as changes may be made during the development process, without notice. Always refer to latest IFC design available in the sales office for the most accurate representation of all construction details



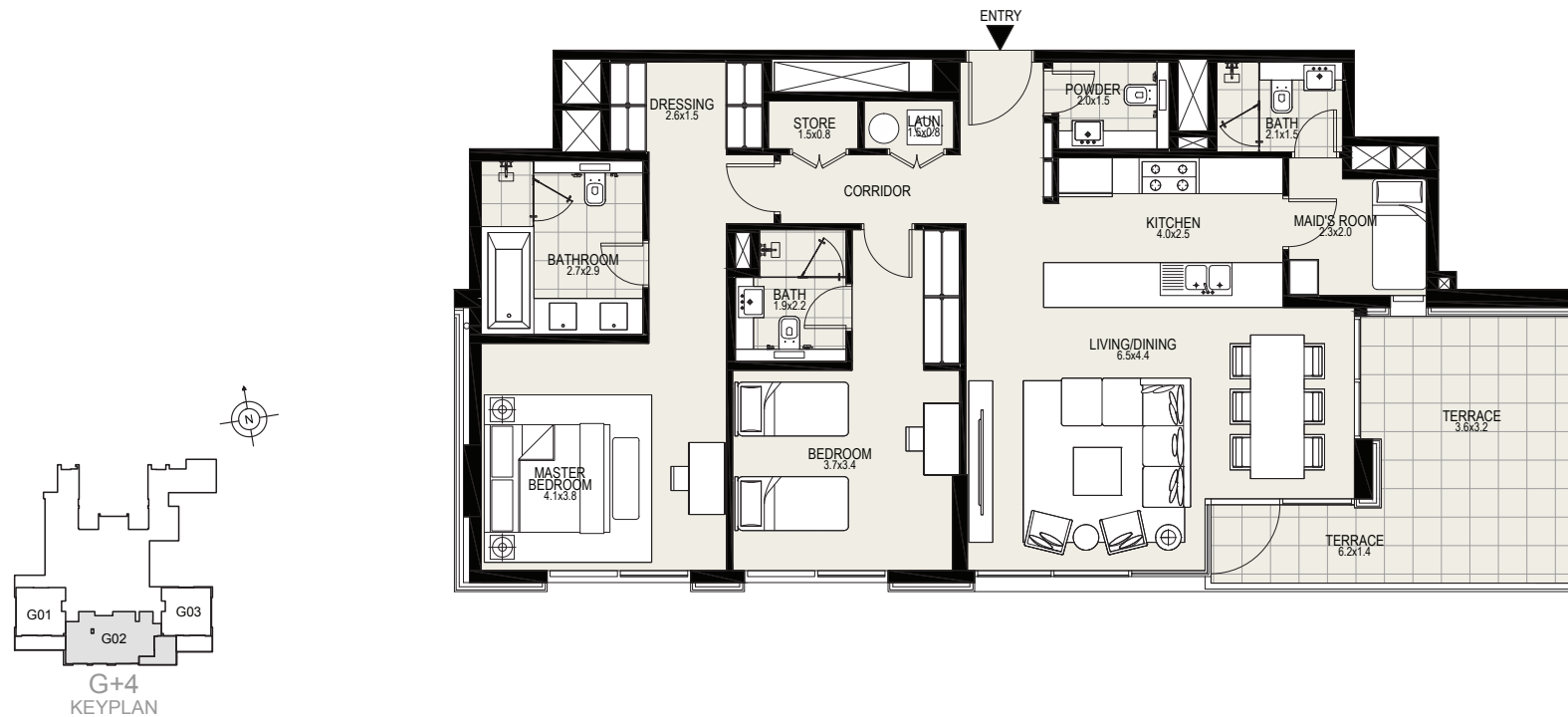
**MOHAMMED BIN RASHID  
AL MAKTOUM CITY**

**DISTRICT ONE**

**2 BEDROOMS**

**UNIT G02 | GROUND FLOOR**

Suite Area	1299 sq. ft
Terrace Area	229 sq. ft
Total Area	1528 sq. ft



DISCLAIMER: All measurements, dimensions, coordinates and drawings given as the Floor Plans in this literature are approximate and provided only for the purpose of marketing, illustration, information and general guidance as such drawings are not to scale. All the rooms, swimming pool, sizes, locations, orientations, dimensions, fixtures, fittings, finishes and specifications (including materials for, placement, size of rooms, windows, doors, balcony, furniture's, inbuilt wardrobe etc.) provided in the floor plans may vary as the same have been taken from concept designs prior to the actual development/construction and therefore their accuracy in relation to actual construction cannot be confirmed. Hence, we make no guarantee, warranty or representation as to the accuracy and completeness of the Floor plan information as changes may be made during the development process, without notice. Always refer to latest IFC design available in the sales office for the most accurate representation of all construction details





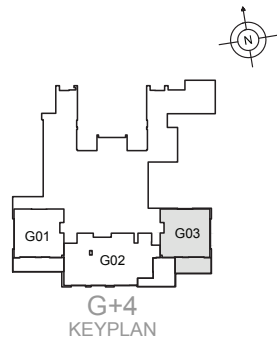
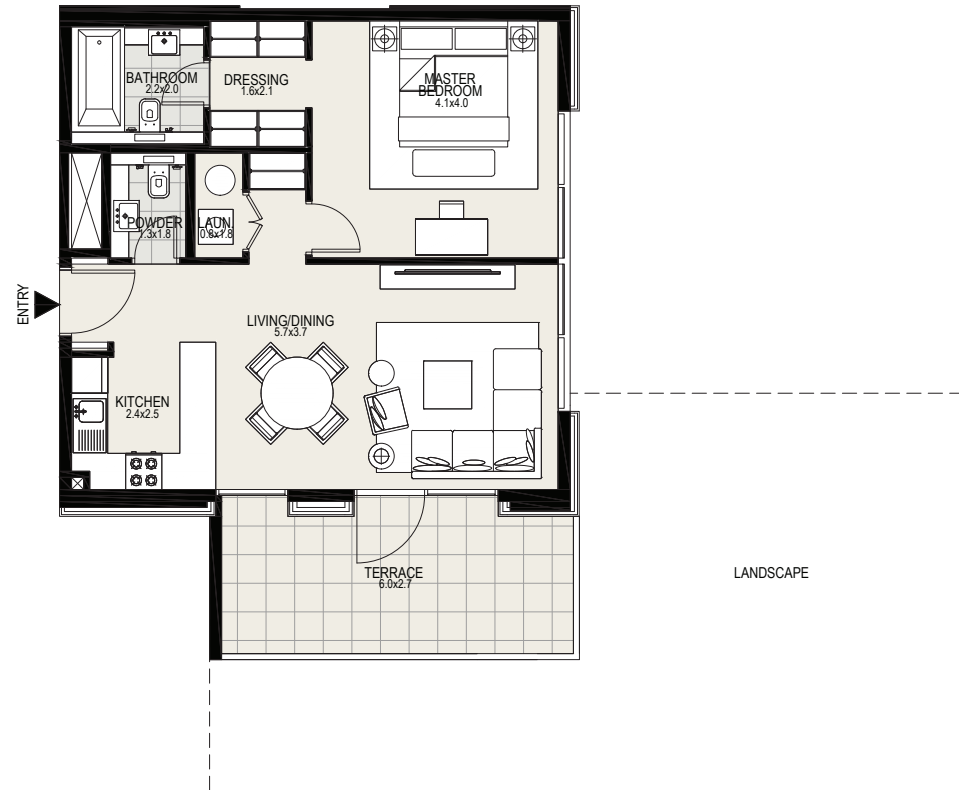
**MOHAMMED BIN RASHID  
AL MAKTOUM CITY**

DISTRICT ONE

1 BEDROOM

UNIT G03 | GROUND FLOOR

Suite Area	703 sq. ft
Terrace Area	173 sq. ft
Landscape Area	611 sq. ft
Total Area	1487 sq. ft



DISCLAIMER: All measurements, dimensions, coordinates and drawings given as the Floor Plans in this literature are approximate and provided only for the purpose of marketing, illustration, information and general guidance as such drawings are not to scale. All the rooms, swimming pool, sizes, locations, orientations, dimensions, fixtures, fittings, finishes and specifications (including materials for, placement, size of rooms, windows, doors, balcony, furniture's, inbuilt wardrobe etc.) provided in the floor plans may vary as the same have been taken from concept designs prior to the actual development/construction and therefore their accuracy in relation to actual construction cannot be confirmed. Hence, we make no guarantee, warranty or representation as to the accuracy and completeness of the Floor plan information as changes may be made during the development process, without notice. Always refer to latest IFC design available in the sales office for the most accurate representation of all construction details



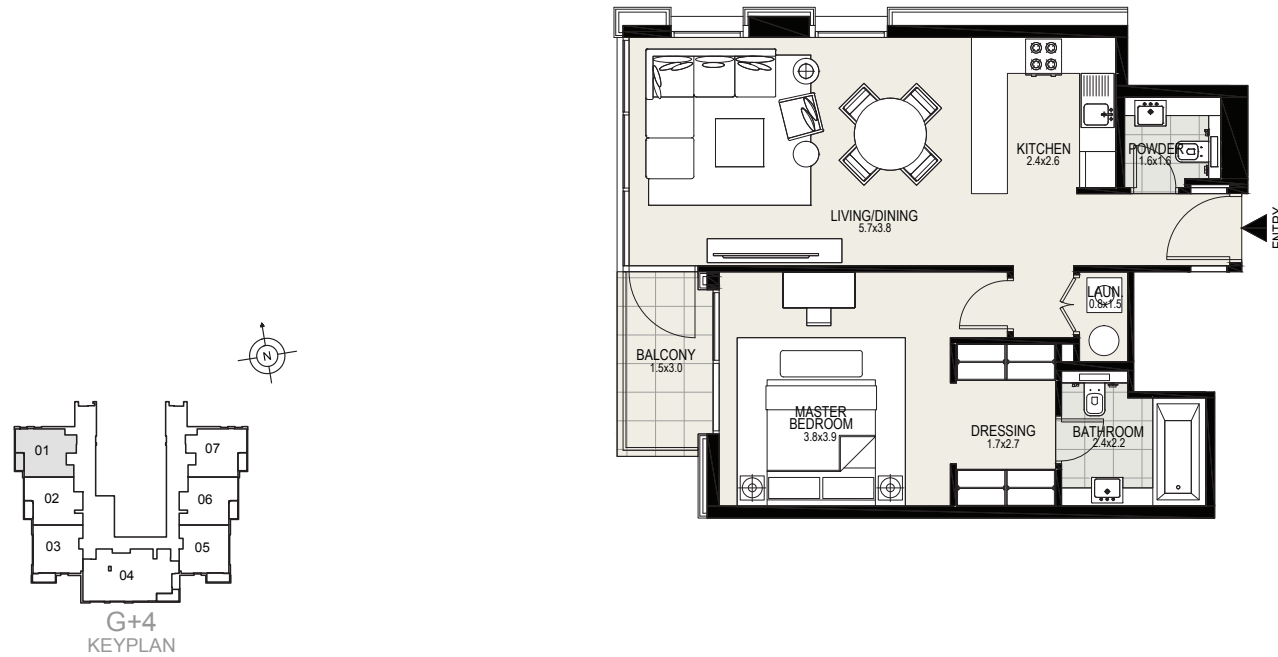
**MOHAMMED BIN RASHID  
AL MAKTOUM CITY**

DISTRICT ONE

1 BEDROOM

UNIT 01 | 1ST to 4TH FLOORS

Suite Area	749 sq. ft
Balcony Area	48 sq. ft
Total Area	797 sq. ft



DISCLAIMER: All measurements, dimensions, coordinates and drawings given as the Floor Plans in this literature are approximate and provided only for the purpose of marketing, illustration, information and general guidance as such drawings are not to scale. All the rooms, swimming pool, sizes, locations, orientations, dimensions, fixtures, fittings, finishes and specifications (including materials for, placement, size of rooms, windows, doors, balcony, furniture's, inbuilt wardrobe etc.) provided in the floor plans may vary as the same have been taken from concept designs prior to the actual development/construction and therefore their accuracy in relation to actual construction cannot be confirmed. Hence, we make no guarantee, warranty or representation as to the accuracy and completeness of the Floor plan information as changes may be made during the development process, without notice. Always refer to latest IFC design available in the sales office for the most accurate representation of all construction details



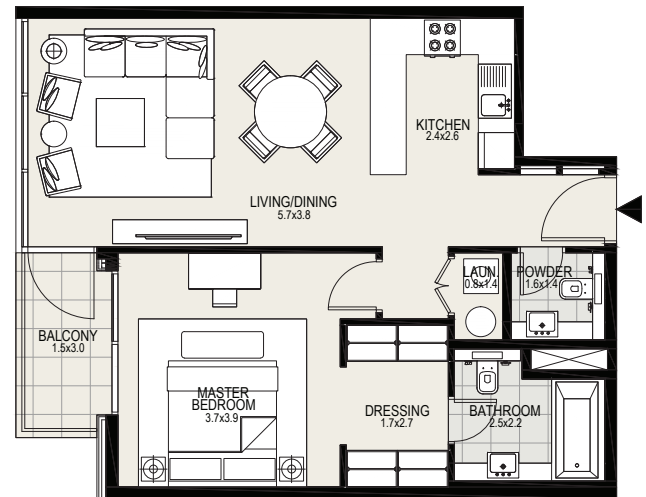
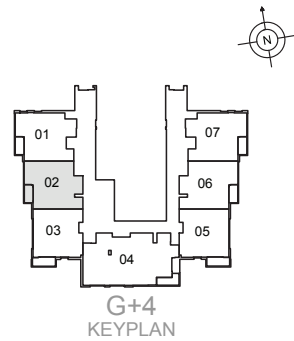
**MOHAMMED BIN RASHID  
AL MAKTOUM CITY**

**DISTRICT ONE**

**1 BEDROOM**

**UNIT 02 | 1ST to 4TH FLOORS**

Suite Area	730 sq. ft
Balcony Area	48 sq. ft
Total Area	778 sq. ft



DISCLAIMER: All measurements, dimensions, coordinates and drawings given as the Floor Plans in this literature are approximate and provided only for the purpose of marketing, illustration, information and general guidance as such drawings are not to scale. All the rooms, swimming pool, sizes, locations, orientations, dimensions, fixtures, fittings, finishes and specifications (including materials for, placement, size of rooms, windows, doors, balcony, furniture's, inbuilt wardrobe etc.) provided in the floor plans may vary as the same have been taken from concept designs prior to the actual development/construction and therefore their accuracy in relation to actual construction cannot be confirmed. Hence, we make no guarantee, warranty or representation as to the accuracy and completeness of the Floor plan information as changes may be made during the development process, without notice. Always refer to latest IFC design available in the sales office for the most accurate representation of all construction details





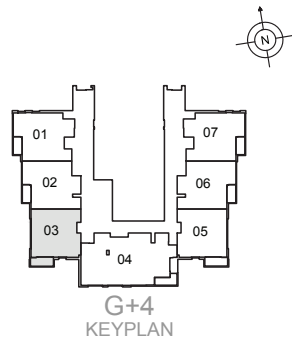
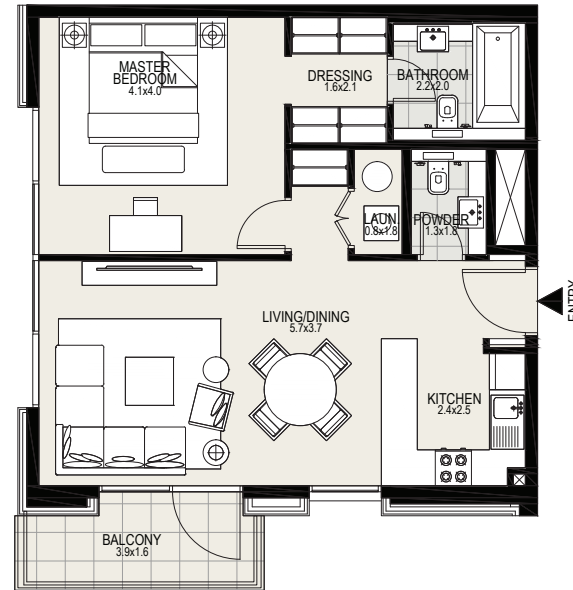
**MOHAMMED BIN RASHID  
AL MAKTOUM CITY**

**DISTRICT ONE**

**1 BEDROOM**

**UNIT 03 | 1ST to 4TH FLOORS**

Suite Area	701 sq. ft
Balcony Area	62 sq. ft
Total Area	763 sq. ft



**DISCLAIMER:** All measurements, dimensions, coordinates and drawings given as the Floor Plans in this literature are approximate and provided only for the purpose of marketing, illustration, information and general guidance as such drawings are not to scale. All the rooms, swimming pool, sizes, locations, orientations, dimensions, fixtures, fittings, finishes and specifications (including materials for, placement, size of rooms, windows, doors, balcony, furniture's, inbuilt wardrobe etc.) provided in the floor plans may vary as the same have been taken from concept designs prior to the actual development/construction and therefore their accuracy in relation to actual construction cannot be confirmed. Hence, we make no guarantee, warranty or representation as to the accuracy and completeness of the Floor plan information as changes may be made during the development process, without notice. Always refer to latest IFC design available in the sales office for the most accurate representation of all construction details



**MOHAMMED BIN RASHID  
AL MAKTOUM CITY**

**DISTRICT ONE**

**2 BEDROOMS**

**UNIT 04 | 1ST to 4TH FLOORS**

Suite Area	1296 sq. ft
Balcony Area	60 sq. ft
Total Area	1356 sq. ft



**DISCLAIMER:** All measurements, dimensions, coordinates and drawings given as the Floor Plans in this literature are approximate and provided only for the purpose of marketing, illustration, information and general guidance as such drawings are not to scale. All the rooms, swimming pool, sizes, locations, orientations, dimensions, fixtures, fittings, finishes and specifications (including materials for, placement, size of rooms, windows, doors, balcony, furniture's, inbuilt wardrobe etc.) provided in the floor plans may vary as the same have been taken from concept designs prior to the actual development/construction and therefore their accuracy in relation to actual construction cannot be confirmed. Hence, we make no guarantee, warranty or representation as to the accuracy and completeness of the Floor plan information as changes may be made during the development process, without notice. Always refer to latest IFC design available in the sales office for the most accurate representation of all construction details



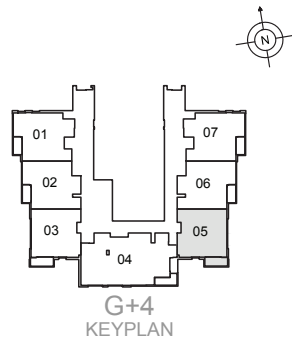
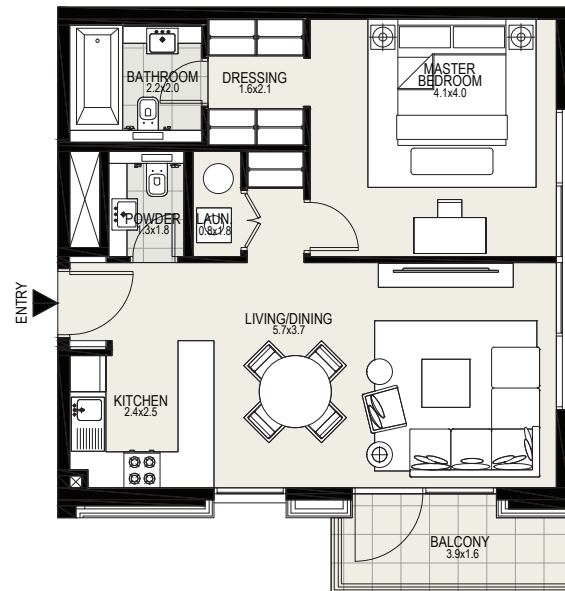
**MOHAMMED BIN RASHID  
AL MAKTOUM CITY**

DISTRICT ONE

1 BEDROOM

UNIT 05 | 1ST to 4TH FLOORS

Suite Area	701 sq. ft
Balcony Area	60 sq. ft
Total Area	761 sq. ft



DISCLAIMER: All measurements, dimensions, coordinates and drawings given as the Floor Plans in this literature are approximate and provided only for the purpose of marketing, illustration, information and general guidance as such drawings are not to scale. All the rooms, swimming pool, sizes, locations, orientations, dimensions, fixtures, fittings, finishes and specifications (including materials for, placement, size of rooms, windows, doors, balcony, furniture's, inbuilt wardrobe etc.) provided in the floor plans may vary as the same have been taken from concept designs prior to the actual development/construction and therefore their accuracy in relation to actual construction cannot be confirmed. Hence, we make no guarantee, warranty or representation as to the accuracy and completeness of the Floor plan information as changes may be made during the development process, without notice. Always refer to latest IFC design available in the sales office for the most accurate representation of all construction details





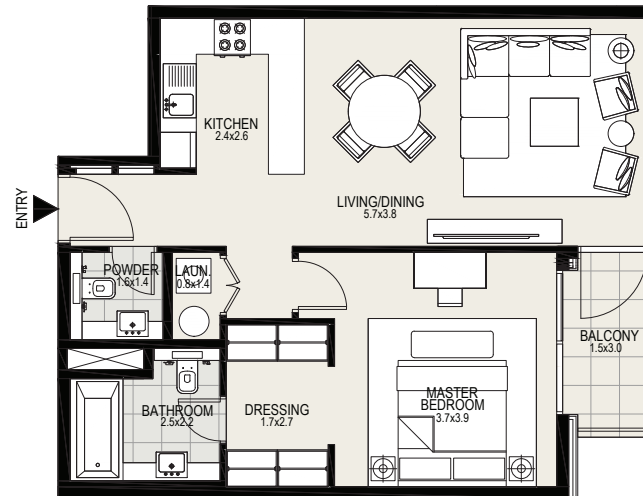
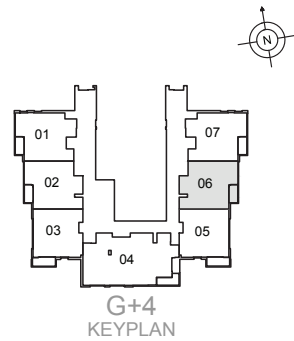
**MOHAMMED BIN RASHID  
AL MAKTOUM CITY**

**DISTRICT ONE**

**1 BEDROOM**

**UNIT 06 | 1ST to 4TH FLOORS**

Suite Area	730 sq. ft
Balcony Area	48 sq. ft
Total Area	778 sq. ft



**DISCLAIMER:** All measurements, dimensions, coordinates and drawings given as the Floor Plans in this literature are approximate and provided only for the purpose of marketing, illustration, information and general guidance as such drawings are not to scale. All the rooms, swimming pool, sizes, locations, orientations, dimensions, fixtures, fittings, finishes and specifications (including materials for, placement, size of rooms, windows, doors, balcony, furniture's, inbuilt wardrobe etc.) provided in the floor plans may vary as the same have been taken from concept designs prior to the actual development/construction and therefore their accuracy in relation to actual construction cannot be confirmed. Hence, we make no guarantee, warranty or representation as to the accuracy and completeness of the Floor plan information as changes may be made during the development process, without notice. Always refer to latest IFC design available in the sales office for the most accurate representation of all construction details



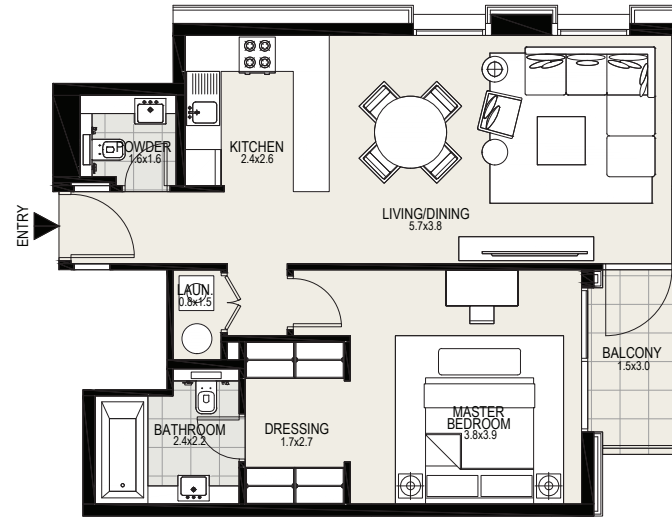
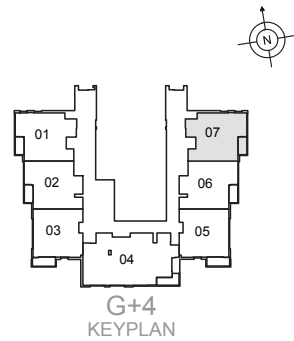
**MOHAMMED BIN RASHID  
AL MAKTOUM CITY**

DISTRICT ONE

1 BEDROOM

UNIT 07 | 1ST to 4TH FLOORS

Suite Area	749 sq. ft
Balcony Area	48 sq. ft
Total Area	797 sq. ft



DISCLAIMER: All measurements, dimensions, coordinates and drawings given as the Floor Plans in this literature are approximate and provided only for the purpose of marketing, illustration, information and general guidance as such drawings are not to scale. All the rooms, swimming pool, sizes, locations, orientations, dimensions, fixtures, fittings, finishes and specifications (including materials for, placement, size of rooms, windows, doors, balcony, furniture's, inbuilt wardrobe etc.) provided in the floor plans may vary as the same have been taken from concept designs prior to the actual development/construction and therefore their accuracy in relation to actual construction cannot be confirmed. Hence, we make no guarantee, warranty or representation as to the accuracy and completeness of the Floor plan information as changes may be made during the development process, without notice. Always refer to latest IFC design available in the sales office for the most accurate representation of all construction details



WITHIN UAE: 800 111 111 | OUTSIDE UAE: +971 4 403 0000 | EMAIL: [INFO@DISTRICT1.COM](mailto:INFO@DISTRICT1.COM) | [WWW.DISTRICT1.COM](http://WWW.DISTRICT1.COM)