



RESIDENCES

DISTRICT1.COM

G+14 | RESIDENCE 13

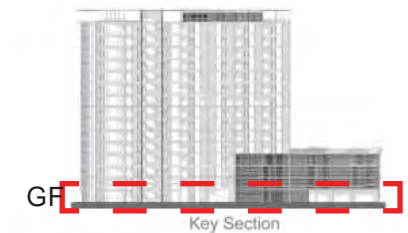
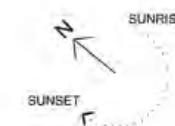


G+14 Apartments Ground Floor

1,2 and 3 Bedroom Apartments



**MOHAMMED BIN RASHID
AL MAKTOUM CITY**
DISTRICT ONE

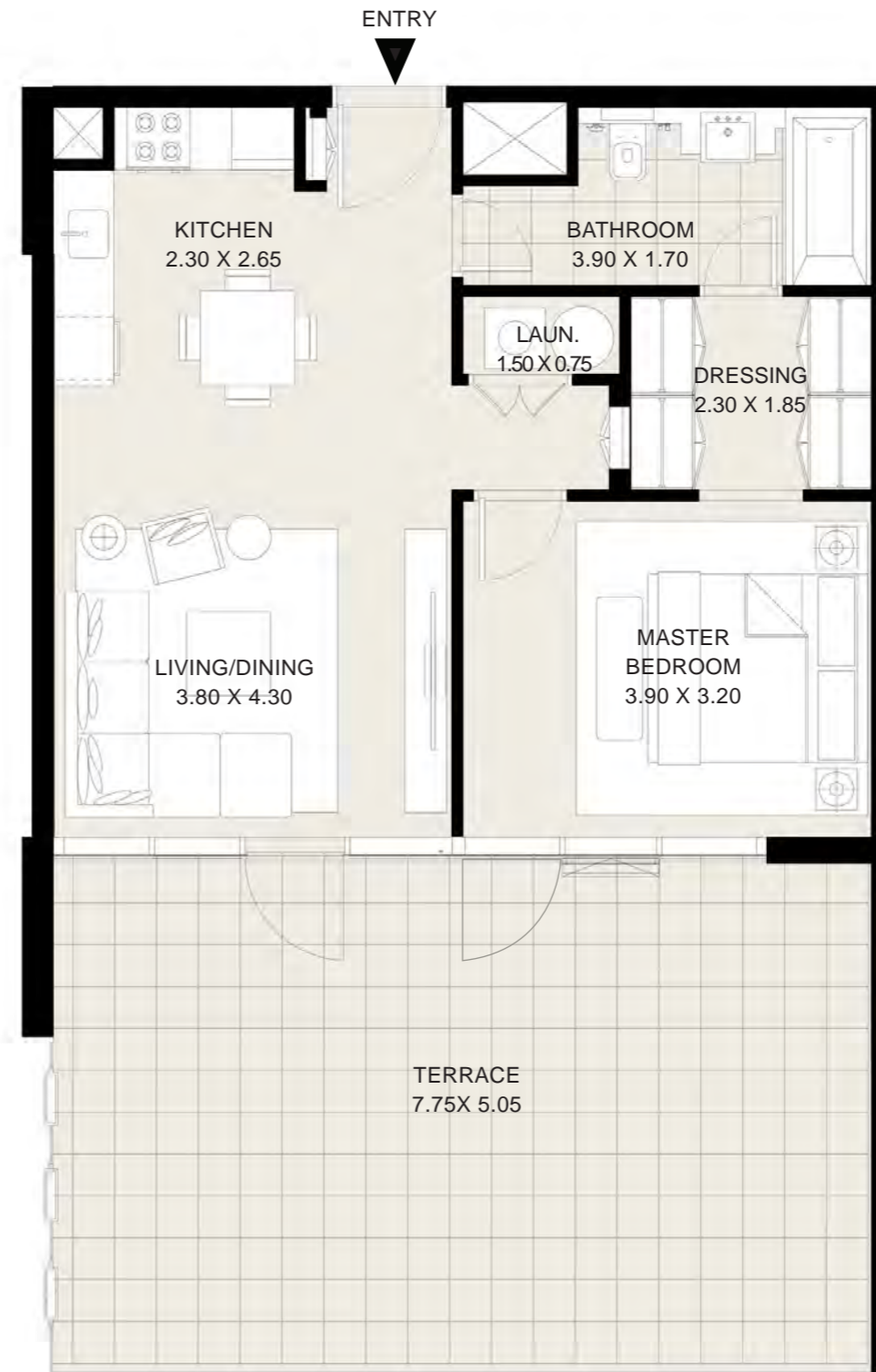
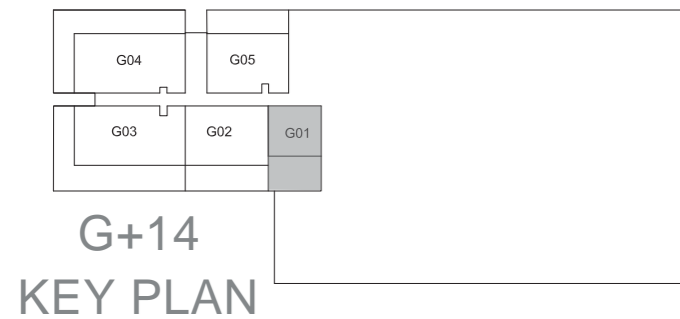


DISCLAIMER: All measurements, dimensions, coordinates and drawings given as the Floor Plans in this literature are approximate and provided only for the purpose of marketing, illustration, information and general guidance as such drawings are not to scale. All the rooms, sizes, locations, orientations, dimensions, fixtures, fittings, finishes and specifications (including materials for, placement, size of rooms, windows, doors, balcony, furniture's, inbuilt wardrobe etc.) provided in the floor plans may vary as the same have been taken from concept designs prior to the actual development/construction and therefore their accuracy in relation to actual construction cannot be confirmed. Hence, we make no guarantee, warranty or representation as to the accuracy and completeness of the Floor plan information as changes may be made during the development process, without notice. Always refer to latest IFC design available in the sales office for the most accurate representation of all construction details.

1 BEDROOM

UNIT G01 | GROUND FLOOR

| | |
|---------------|------------|
| Suite Area: | 612 sq.ft |
| Terrace Area: | 438 sq.ft |
| Total Area: | 1050 sq.ft |

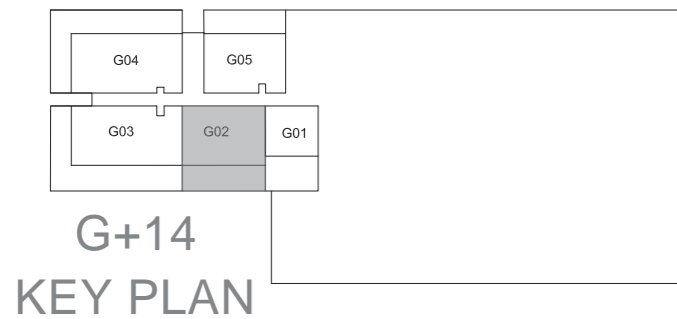


DISCLAIMER: All measurements, dimensions, coordinates and drawings given as the Floor Plans in this literature are approximate and provided only for the purpose of marketing, illustration, information and general guidance as such drawings are not to scale. All the rooms, sizes, locations, orientations, dimensions, fixtures, fittings, finishes and specifications (including materials for, placement, size of rooms, windows, doors, balcony, furniture's, inbuilt wardrobe etc.) provided in the floor plans may vary as the same have been taken from concept designs prior to the actual development/construction and therefore their accuracy in relation to actual construction cannot be confirmed. Hence, we make no guarantee, warranty or representation as to the accuracy and completeness of the Floor plan information as changes may be made during the development process, without notice. Always refer to latest IFC design available in the sales office for the most accurate representation of all construction details.

2 BEDROOM

UNIT G02 | GROUND FLOOR

| | |
|---------------|------------|
| Suite Area: | 1108 sq.ft |
| Terrace Area: | 457 sq.ft |
| Total Area: | 1565 sq.ft |

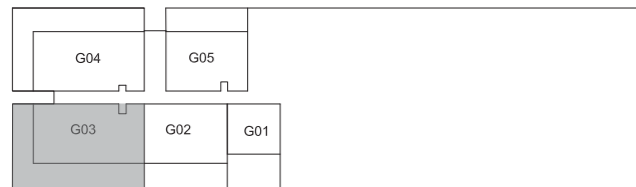
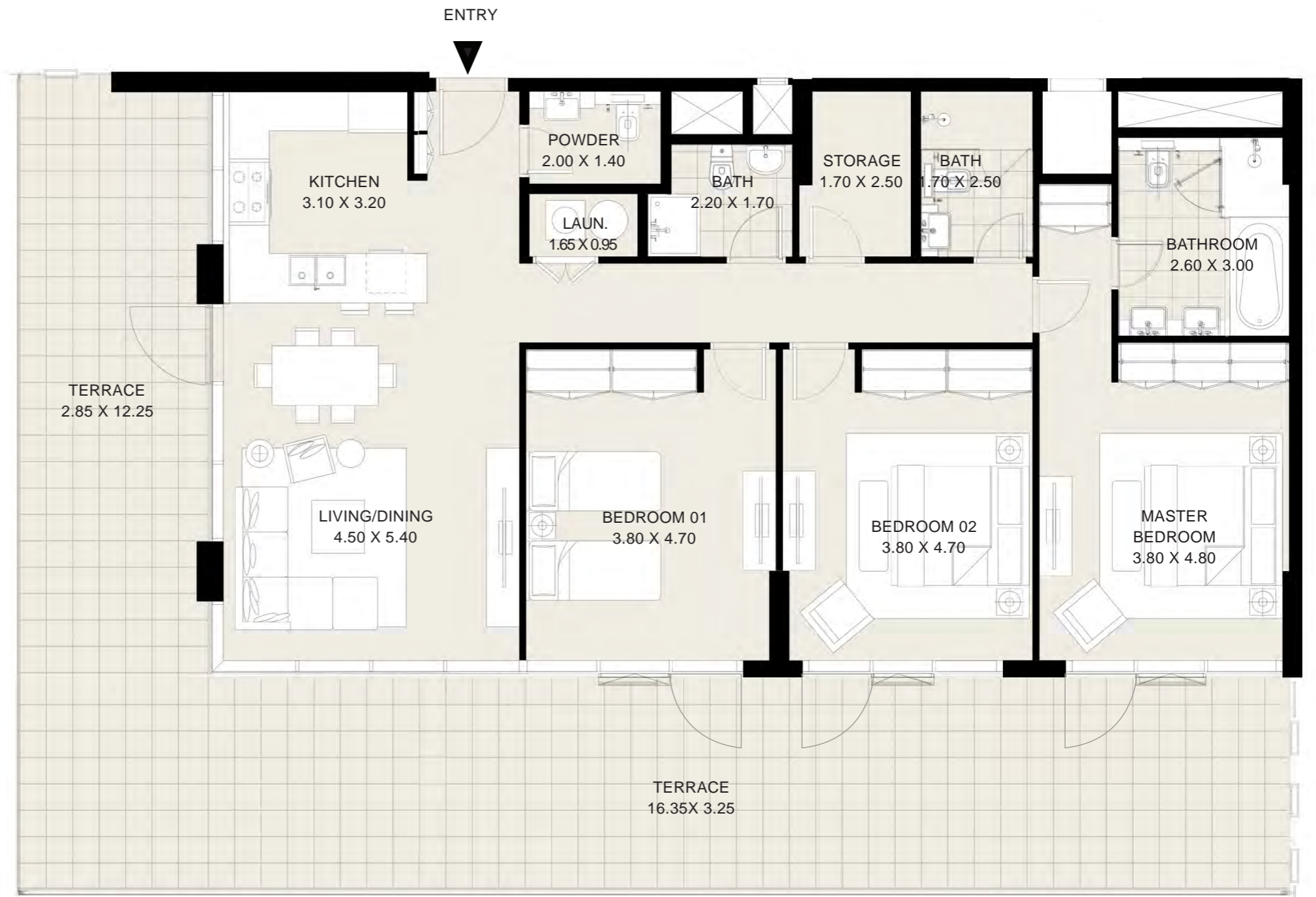


DISCLAIMER: All measurements, dimensions, coordinates and drawings given as the Floor Plans in this literature are approximate and provided only for the purpose of marketing, illustration, information and general guidance as such drawings are not to scale. All the rooms, sizes, locations, orientations, dimensions, fixtures, fittings, finishes and specifications (including materials for, placement, size of rooms, windows, doors, balcony, furniture's, inbuilt wardrobe etc.) provided in the floor plans may vary as the same have been taken from concept designs prior to the actual development/construction and therefore their accuracy in relation to actual construction cannot be confirmed. Hence, we make no guarantee, warranty or representation as to the accuracy and completeness of the Floor plan information as changes may be made during the development process, without notice. Always refer to latest IFC design available in the sales office for the most accurate representation of all construction details.

3 BEDROOM

UNIT G03 | GROUND FLOOR

| | |
|---------------|------------|
| Suite Area: | 1515 sq.ft |
| Terrace Area: | 1029 sq.ft |
| Total Area: | 2544 sq.ft |



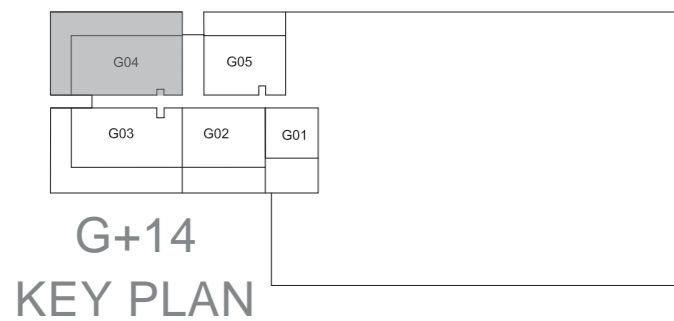
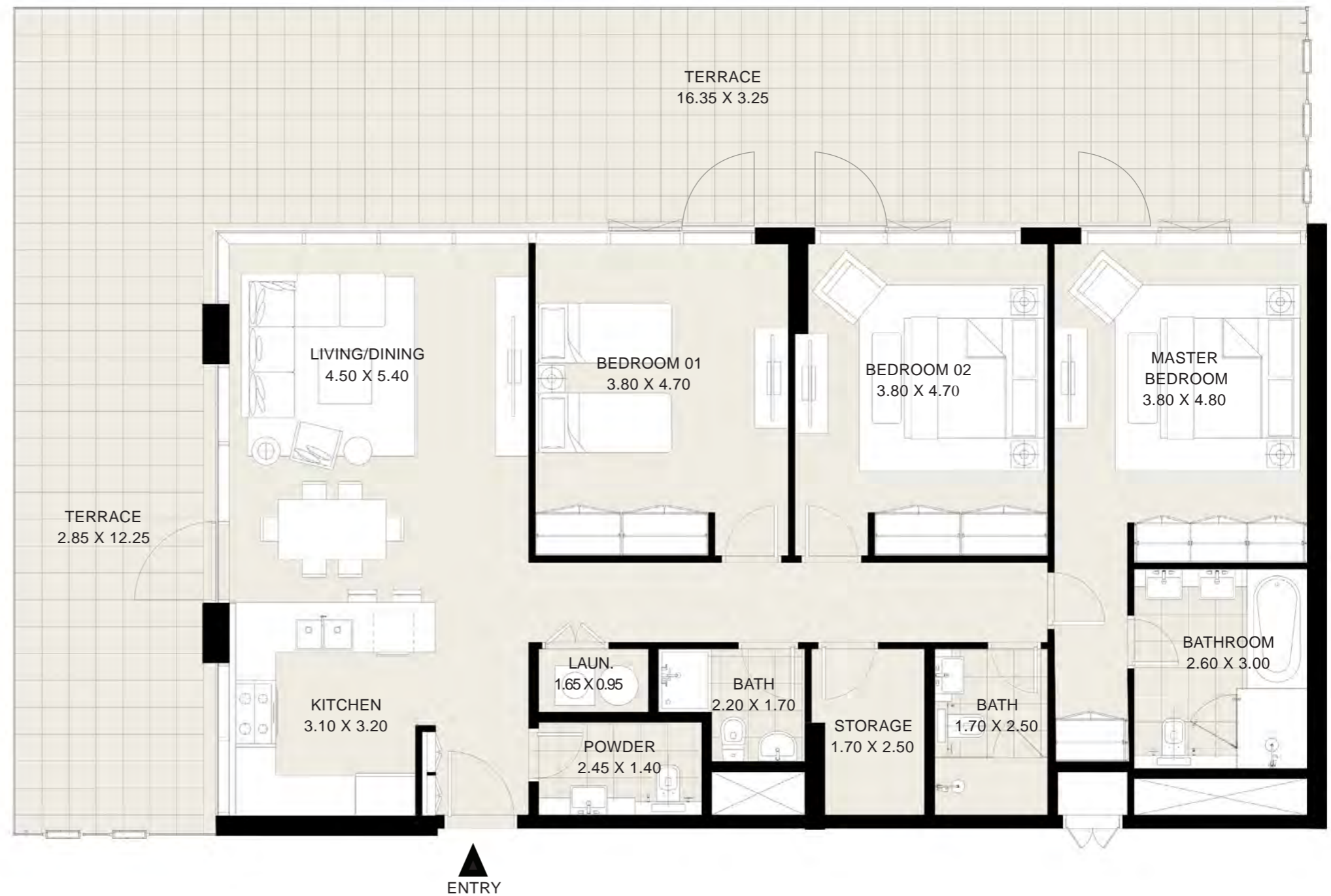
**G+14
KEY PLAN**

DISCLAIMER: All measurements, dimensions, coordinates and drawings given as the Floor Plans in this literature are approximate and provided only for the purpose of marketing, illustration, information and general guidance as such drawings are not to scale. All the rooms, sizes, locations, orientations, dimensions, fixtures, fittings, finishes and specifications (including materials for, placement, size of rooms, windows, doors, balcony, furniture's, inbuilt wardrobe etc.) provided in the floor plans may vary as the same have been taken from concept designs prior to the actual development/construction and therefore their accuracy in relation to actual construction cannot be confirmed. Hence, we make no guarantee, warranty or representation as to the accuracy and completeness of the Floor plan information as changes may be made during the development process, without notice. Always refer to latest IFC design available in the sales office for the most accurate representation of all construction details.

3 BEDROOM

UNIT G04 | GROUND FLOOR

| | |
|---------------|------------|
| Suite Area: | 1532 sq.ft |
| Terrace Area: | 1030 sq.ft |
| Total Area: | 2562 sq.ft |



DISCLAIMER: All measurements, dimensions, coordinates and drawings given as the Floor Plans in this literature are approximate and provided only for the purpose of marketing, illustration, information and general guidance as such drawings are not to scale. All the rooms, sizes, locations, orientations, dimensions, fixtures, fittings, finishes and specifications (including materials for, placement, size of rooms, windows, doors, balcony, furniture's, inbuilt wardrobe etc.) provided in the floor plans may vary as the same have been taken from concept designs prior to the actual development/construction and therefore their accuracy in relation to actual construction cannot be confirmed. Hence, we make no guarantee, warranty or representation as to the accuracy and completeness of the Floor plan information as changes may be made during the development process, without notice. Always refer to latest IFC design available in the sales office for the most accurate representation of all construction details.

2 BEDROOM

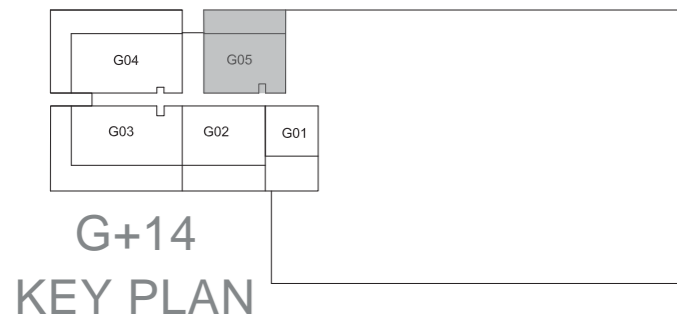
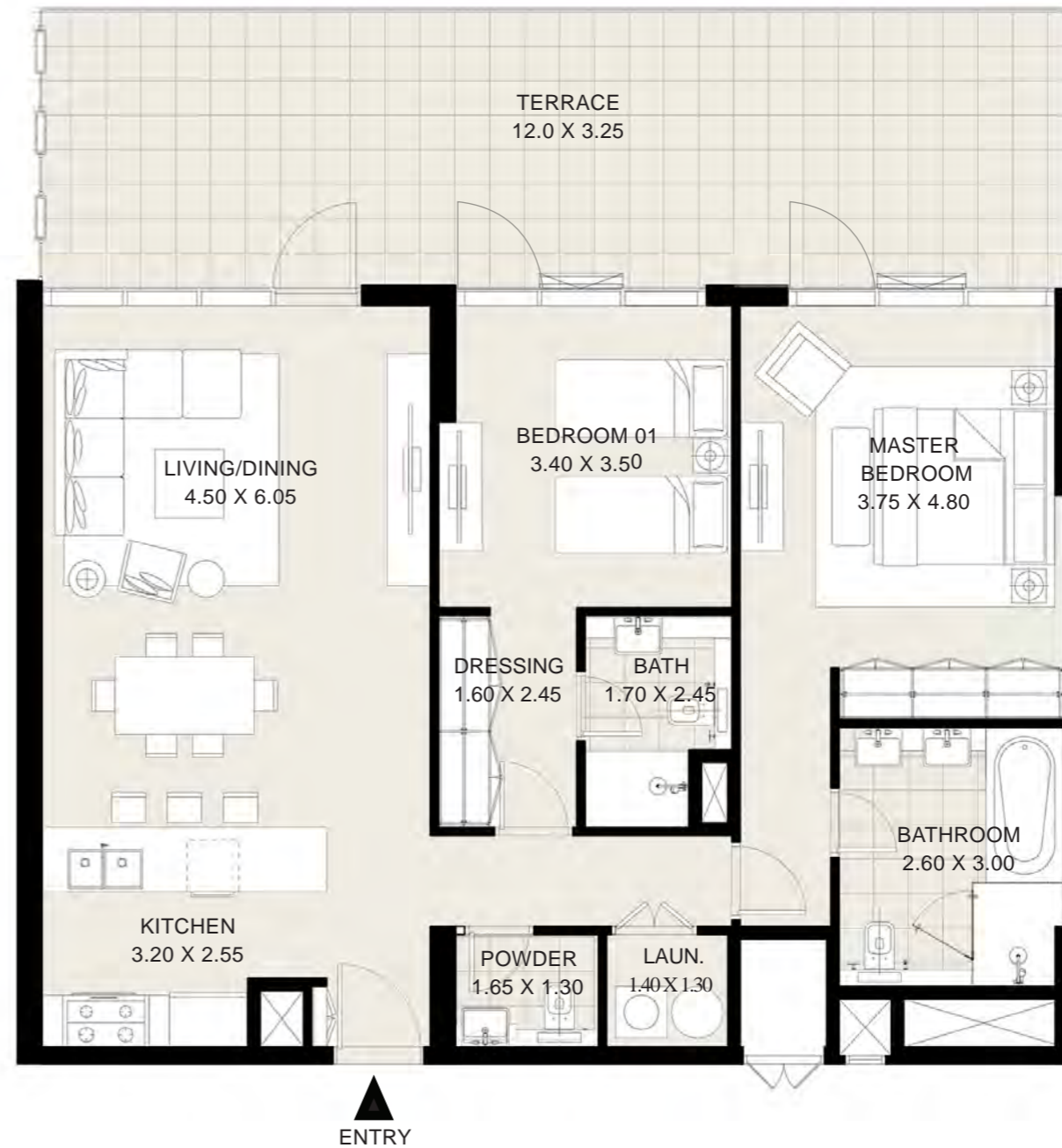


**MOHAMMED BIN RASHID
AL MAKTOUM CITY**

DISTRICT ONE

UNIT G05 | GROUND FLOOR

| | |
|---------------|------------|
| Suite Area: | 1104 sq.ft |
| Terrace Area: | 447 sq.ft |
| Total Area: | 1551 sq.ft |



DISCLAIMER: All measurements, dimensions, coordinates and drawings given as the Floor Plans in this literature are approximate and provided only for the purpose of marketing, illustration, information and general guidance as such drawings are not to scale. All the rooms, sizes, locations, orientations, dimensions, fixtures, fittings, finishes and specifications (including materials for, placement, size of rooms, windows, doors, balcony, furniture's, inbuilt wardrobe etc.) provided in the floor plans may vary as the same have been taken from concept designs prior to the actual development/construction and therefore their accuracy in relation to actual construction cannot be confirmed. Hence, we make no guarantee, warranty or representation as to the accuracy and completeness of the Floor plan information as changes may be made during the development process, without notice. Always refer to latest IFC design available in the sales office for the most accurate representation of all construction details.

G+14 Apartments 1st Floor

1,2 and 3 Bedroom Apartments



MOHAMMED BIN RASHID
AL MAKTOUM CITY

DISTRICT ONE

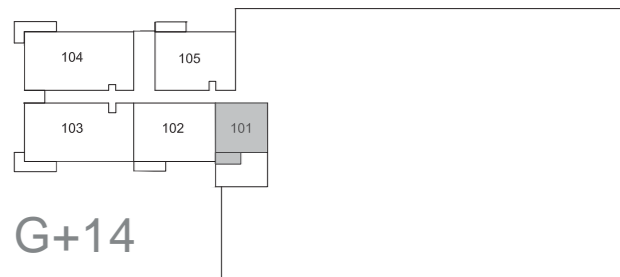


DISCLAIMER: All measurements, dimensions, coordinates and drawings given as the Floor Plans in this literature are approximate and provided only for the purpose of marketing, illustration, information and general guidance as such drawings are not to scale. All the rooms, sizes, locations, orientations, dimensions, fixtures, fittings, finishes and specifications (including materials for, placement, size of rooms, windows, doors, balcony, furniture's, inbuilt wardrobe etc.) provided in the floor plans may vary as the same have been taken from concept designs prior to the actual development/construction and therefore their accuracy in relation to actual construction cannot be confirmed. Hence, we make no guarantee, warranty or representation as to the accuracy and completeness of the Floor plan information as changes may be made during the development process, without notice. Always refer to latest IFC design available in the sales office for the most accurate representation of all construction details.

1 BEDROOM

UNIT 101 | 1ST FLOOR

| | |
|---------------|-----------|
| Suite Area: | 612 sq.ft |
| Balcony Area: | 67 sq.ft |
| Total Area: | 679 sq.ft |



**G+14
KEY PLAN**



DISCLAIMER: All measurements, dimensions, coordinates and drawings given as the Floor Plans in this literature are approximate and provided only for the purpose of marketing, illustration, information and general guidance as such drawings are not to scale. All the rooms, sizes, locations, orientations, dimensions, fixtures, fittings, finishes and specifications (including materials for, placement, size of rooms, windows, doors, balcony, furniture's, inbuilt wardrobe etc.) provided in the floor plans may vary as the same have been taken from concept designs prior to the actual development/construction and therefore their accuracy in relation to actual construction cannot be confirmed. Hence, we make no guarantee, warranty or representation as to the accuracy and completeness of the Floor plan information as changes may be made during the development process, without notice. Always refer to latest IFC design available in the sales office for the most accurate representation of all construction details.

2 BEDROOM



**MOHAMMED BIN RASHID
AL MAKTOUM CITY**

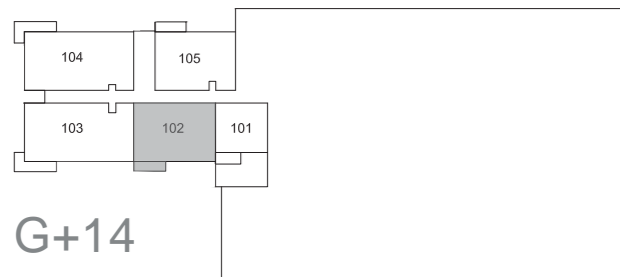
DISTRICT ONE

UNIT 102 | 1ST FLOOR

Suite Area: 1108 sq.ft

Balcony Area: 71 sq.ft

Total Area: 1179 sq.ft



**G+14
KEY PLAN**

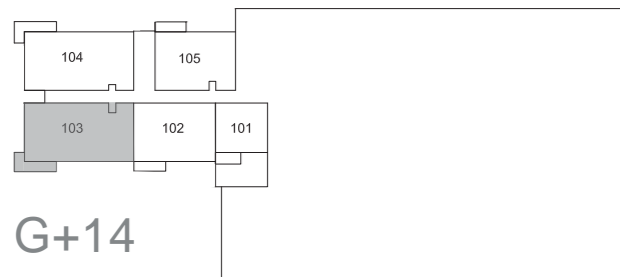


DISCLAIMER: All measurements, dimensions, coordinates and drawings given as the Floor Plans in this literature are approximate and provided only for the purpose of marketing, illustration, information and general guidance as such drawings are not to scale. All the rooms, sizes, locations, orientations, dimensions, fixtures, fittings, finishes and specifications (including materials for, placement, size of rooms, windows, doors, balcony, furniture's, inbuilt wardrobe etc.) provided in the floor plans may vary as the same have been taken from concept designs prior to the actual development/construction and therefore their accuracy in relation to actual construction cannot be confirmed. Hence, we make no guarantee, warranty or representation as to the accuracy and completeness of the Floor plan information as changes may be made during the development process, without notice. Always refer to latest IFC design available in the sales office for the most accurate representation of all construction details.

3 BEDROOM

UNIT 103 | 1ST FLOOR

| | |
|---------------|------------|
| Suite Area: | 1515 sq.ft |
| Balcony Area: | 129 sq.ft |
| Total Area: | 1644 sq.ft |



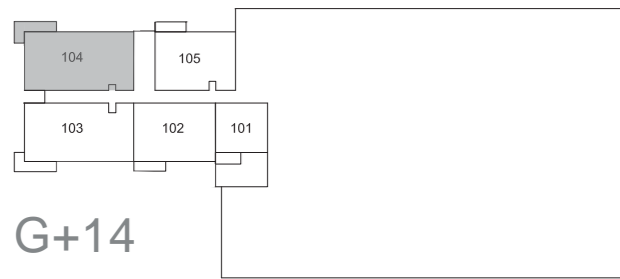
**G+14
KEY PLAN**

DISCLAIMER: All measurements, dimensions, coordinates and drawings given as the Floor Plans in this literature are approximate and provided only for the purpose of marketing, illustration, information and general guidance as such drawings are not to scale. All the rooms, sizes, locations, orientations, dimensions, fixtures, fittings, finishes and specifications (including materials for, placement, size of rooms, windows, doors, balcony, furniture's, inbuilt wardrobe etc.) provided in the floor plans may vary as the same have been taken from concept designs prior to the actual development/construction and therefore their accuracy in relation to actual construction cannot be confirmed. Hence, we make no guarantee, warranty or representation as to the accuracy and completeness of the Floor plan information as changes may be made during the development process, without notice. Always refer to latest IFC design available in the sales office for the most accurate representation of all construction details.

3 BEDROOM

UNIT 104 | 1ST FLOOR

| | |
|---------------|------------|
| Suite Area: | 1531 sq.ft |
| Balcony Area: | 129 sq.ft |
| Total Area: | 1660 sq.ft |



**G+14
KEY PLAN**

DISCLAIMER: All measurements, dimensions, coordinates and drawings given as the Floor Plans in this literature are approximate and provided only for the purpose of marketing, illustration, information and general guidance as such drawings are not to scale. All the rooms, sizes, locations, orientations, dimensions, fixtures, fittings, finishes and specifications (including materials for, placement, size of rooms, windows, doors, balcony, furniture's, inbuilt wardrobe etc.) provided in the floor plans may vary as the same have been taken from concept designs prior to the actual development/construction and therefore their accuracy in relation to actual construction cannot be confirmed. Hence, we make no guarantee, warranty or representation as to the accuracy and completeness of the Floor plan information as changes may be made during the development process, without notice. Always refer to latest IFC design available in the sales office for the most accurate representation of all construction details.

2 BEDROOM



MOHAMMED BIN RASHID
AL MAKTOUM CITY

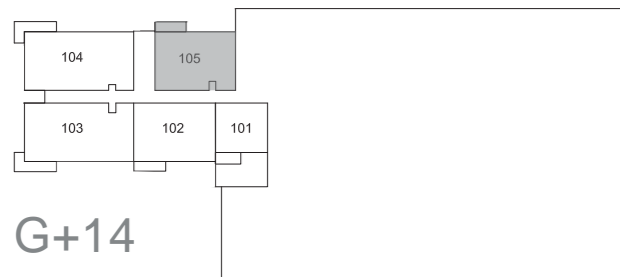
DISTRICT ONE

UNIT 105 | 1ST FLOOR

Suite Area: 1104 sq.ft

Balcony Area: 69 sq.ft

Total Area: 1173 sq.ft



G+14
KEY PLAN



DISCLAIMER: All measurements, dimensions, coordinates and drawings given as the Floor Plans in this literature are approximate and provided only for the purpose of marketing, illustration, information and general guidance as such drawings are not to scale. All the rooms, sizes, locations, orientations, dimensions, fixtures, fittings, finishes and specifications (including materials for, placement, size of rooms, windows, doors, balcony, furniture's, inbuilt wardrobe etc.) provided in the floor plans may vary as the same have been taken from concept designs prior to the actual development/construction and therefore their accuracy in relation to actual construction cannot be confirmed. Hence, we make no guarantee, warranty or representation as to the accuracy and completeness of the Floor plan information as changes may be made during the development process, without notice. Always refer to latest IFC design available in the sales office for the most accurate representation of all construction details.

G+14 Apartments 2nd & 3rd Floor

1,2 and 3 Bedroom Apartments



MOHAMMED BIN RASHID
AL MAKTOUM CITY

DISTRICT ONE

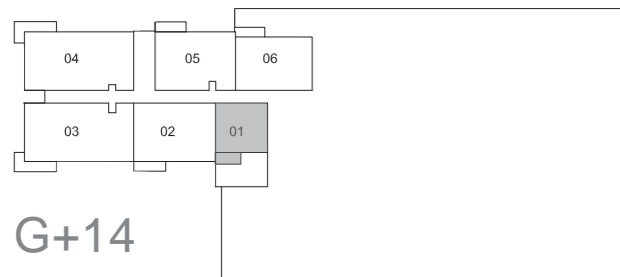


DISCLAIMER: All measurements, dimensions, coordinates and drawings given as the Floor Plans in this literature are approximate and provided only for the purpose of marketing, illustration, information and general guidance as such drawings are not to scale. All the rooms, sizes, locations, orientations, dimensions, fixtures, fittings, finishes and specifications (including materials for, placement, size of rooms, windows, doors, balcony, furniture's, inbuilt wardrobe etc.) provided in the floor plans may vary as the same have been taken from concept designs prior to the actual development/construction and therefore their accuracy in relation to actual construction cannot be confirmed. Hence, we make no guarantee, warranty or representation as to the accuracy and completeness of the Floor plan information as changes may be made during the development process, without notice. Always refer to latest IFC design available in the sales office for the most accurate representation of all construction details.

1 BEDROOM

UNIT 01 | 2ND to 3RD FLOORS

| | |
|---------------|-----------|
| Suite Area: | 612 sq.ft |
| Balcony Area: | 71 sq.ft |
| Total Area: | 683 sq.ft |



G+14
KEY PLAN



DISCLAIMER: All measurements, dimensions, coordinates and drawings given as the Floor Plans in this literature are approximate and provided only for the purpose of marketing, illustration, information and general guidance as such drawings are not to scale. All the rooms, sizes, locations, orientations, dimensions, fixtures, fittings, finishes and specifications (including materials for, placement, size of rooms, windows, doors, balcony, furniture's, inbuilt wardrobe etc.) provided in the floor plans may vary as the same have been taken from concept designs prior to the actual development/construction and therefore their accuracy in relation to actual construction cannot be confirmed. Hence, we make no guarantee, warranty or representation as to the accuracy and completeness of the Floor plan information as changes may be made during the development process, without notice. Always refer to latest IFC design available in the sales office for the most accurate representation of all construction details.

2 BEDROOM



**MOHAMMED BIN RASHID
AL MAKTOUM CITY**

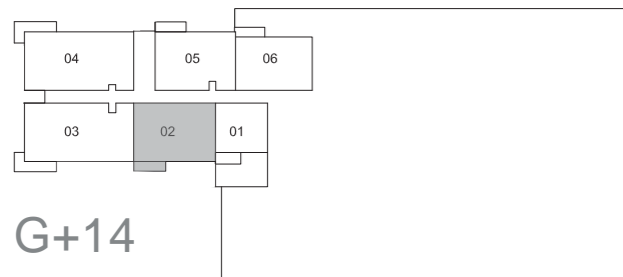
DISTRICT ONE

UNIT 02 | 2ND to 3RD FLOORS

Suite Area: 1108 sq.ft

Balcony Area: 71 sq.ft

Total Area: 1179 sq.ft



**G+14
KEY PLAN**

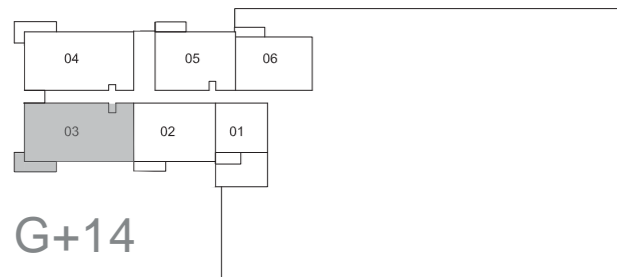


DISCLAIMER: All measurements, dimensions, coordinates and drawings given as the Floor Plans in this literature are approximate and provided only for the purpose of marketing, illustration, information and general guidance as such drawings are not to scale. All the rooms, sizes, locations, orientations, dimensions, fixtures, fittings, finishes and specifications (including materials for, placement, size of rooms, windows, doors, balcony, furniture's, inbuilt wardrobe etc.) provided in the floor plans may vary as the same have been taken from concept designs prior to the actual development/construction and therefore their accuracy in relation to actual construction cannot be confirmed. Hence, we make no guarantee, warranty or representation as to the accuracy and completeness of the Floor plan information as changes may be made during the development process, without notice. Always refer to latest IFC design available in the sales office for the most accurate representation of all construction details.

3 BEDROOM

UNIT 03| 2ND to 3RD FLOORS

| | |
|---------------|------------|
| Suite Area: | 1515 sq.ft |
| Balcony Area: | 129 sq.ft |
| Total Area: | 1644 sq.ft |



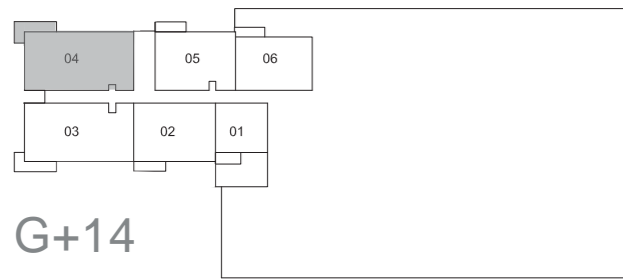
**G+14
KEY PLAN**

DISCLAIMER: All measurements, dimensions, coordinates and drawings given as the Floor Plans in this literature are approximate and provided only for the purpose of marketing, illustration, information and general guidance as such drawings are not to scale. All the rooms, sizes, locations, orientations, dimensions, fixtures, fittings, finishes and specifications (including materials for, placement, size of rooms, windows, doors, balcony, furniture's, inbuilt wardrobe etc.) provided in the floor plans may vary as the same have been taken from concept designs prior to the actual development/construction and therefore their accuracy in relation to actual construction cannot be confirmed. Hence, we make no guarantee, warranty or representation as to the accuracy and completeness of the Floor plan information as changes may be made during the development process, without notice. Always refer to latest IFC design available in the sales office for the most accurate representation of all construction details.

3 BEDROOM

UNIT 04| 2ND to 3RD FLOORS

| | |
|---------------|------------|
| Suite Area: | 1531 sq.ft |
| Balcony Area: | 129 sq.ft |
| Total Area: | 1660 sq.ft |



**G+14
KEY PLAN**

DISCLAIMER: All measurements, dimensions, coordinates and drawings given as the Floor Plans in this literature are approximate and provided only for the purpose of marketing, illustration, information and general guidance as such drawings are not to scale. All the rooms, sizes, locations, orientations, dimensions, fixtures, fittings, finishes and specifications (including materials for, placement, size of rooms, windows, doors, balcony, furniture's, inbuilt wardrobe etc.) provided in the floor plans may vary as the same have been taken from concept designs prior to the actual development/construction and therefore their accuracy in relation to actual construction cannot be confirmed. Hence, we make no guarantee, warranty or representation as to the accuracy and completeness of the Floor plan information as changes may be made during the development process, without notice. Always refer to latest IFC design available in the sales office for the most accurate representation of all construction details.

2 BEDROOM



MOHAMMED BIN RASHID
AL MAKTOUM CITY

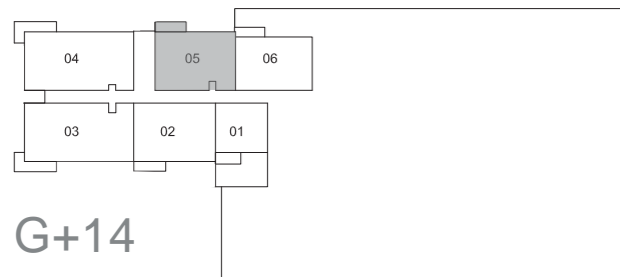
DISTRICT ONE

UNIT 05 | 2ND to 3RD FLOORS

Suite Area: 1103 sq.ft

Balcony Area: 69 sq.ft

Total Area: 1172 sq.ft



G+14
KEY PLAN



DISCLAIMER: All measurements, dimensions, coordinates and drawings given as the Floor Plans in this literature are approximate and provided only for the purpose of marketing, illustration, information and general guidance as such drawings are not to scale. All the rooms, sizes, locations, orientations, dimensions, fixtures, fittings, finishes and specifications (including materials for, placement, size of rooms, windows, doors, balcony, furniture's, inbuilt wardrobe etc.) provided in the floor plans may vary as the same have been taken from concept designs prior to the actual development/construction and therefore their accuracy in relation to actual construction cannot be confirmed. Hence, we make no guarantee, warranty or representation as to the accuracy and completeness of the Floor plan information as changes may be made during the development process, without notice. Always refer to latest IFC design available in the sales office for the most accurate representation of all construction details.

2 BEDROOM



**MOHAMMED BIN RASHID
AL MAKTOUM CITY**

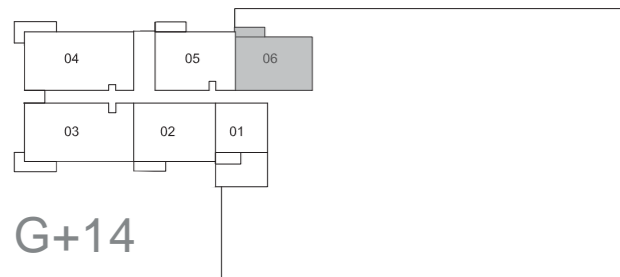
DISTRICT ONE

UNIT 06 | 2ND to 3RD FLOORS

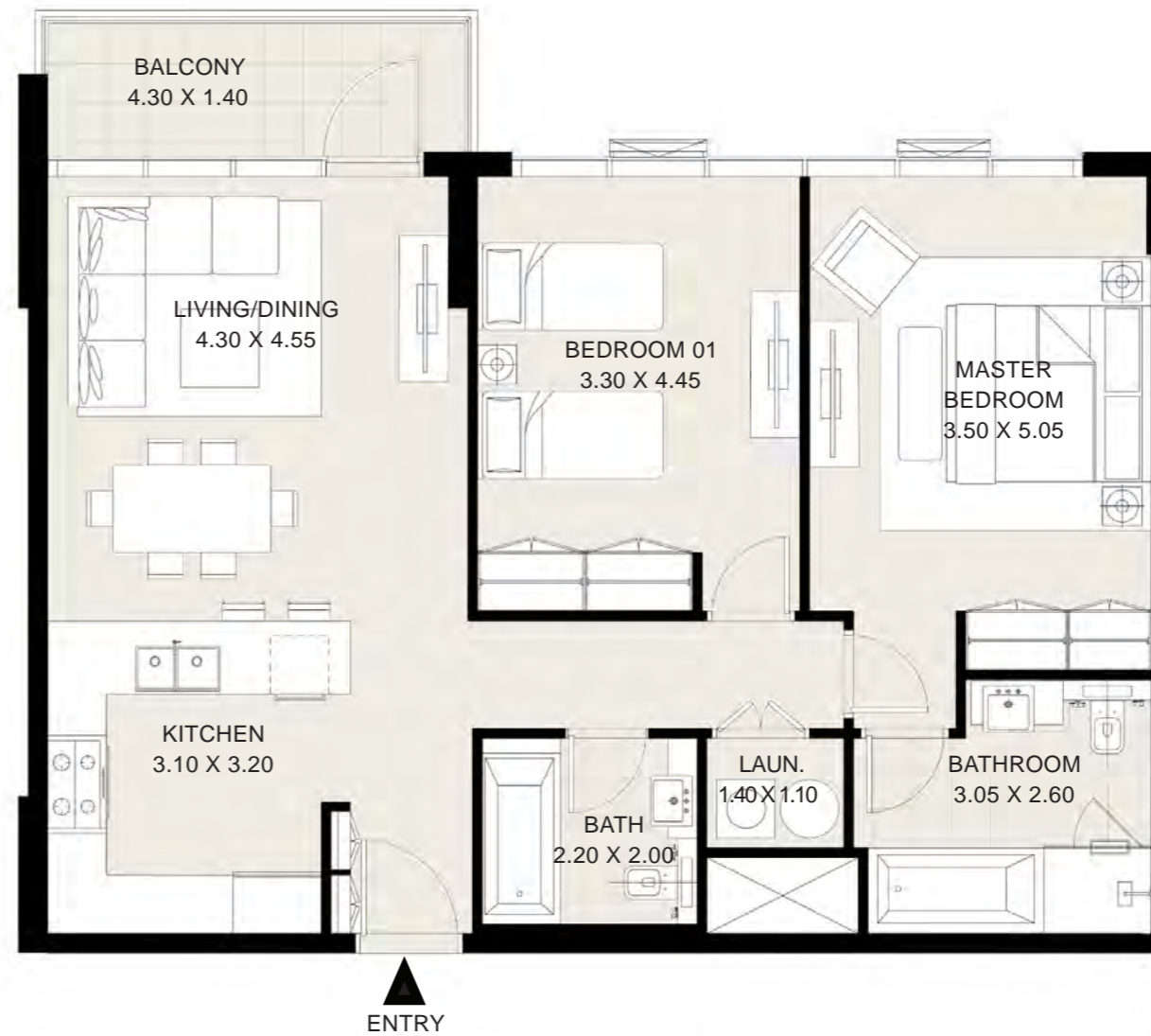
Suite Area: 977 sq.ft

Balcony Area: 68 sq.ft

Total Area: 1045 sq.ft



**G+14
KEY PLAN**



DISCLAIMER: All measurements, dimensions, coordinates and drawings given as the Floor Plans in this literature are approximate and provided only for the purpose of marketing, illustration, information and general guidance as such drawings are not to scale. All the rooms, sizes, locations, orientations, dimensions, fixtures, fittings, finishes and specifications (including materials for, placement, size of rooms, windows, doors, balcony, furniture's, inbuilt wardrobe etc.) provided in the floor plans may vary as the same have been taken from concept designs prior to the actual development/construction and therefore their accuracy in relation to actual construction cannot be confirmed. Hence, we make no guarantee, warranty or representation as to the accuracy and completeness of the Floor plan information as changes may be made during the development process, without notice. Always refer to latest IFC design available in the sales office for the most accurate representation of all construction details.

G+14 Apartments

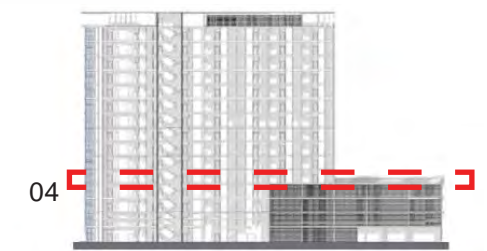
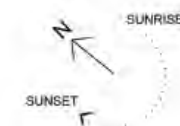
4th Floor

1,2 and 3 Bedroom Apartments



MOHAMMED BIN RASHID
AL MAKTOUM CITY

DISTRICT ONE



Key Section

DISCLAIMER: All measurements, dimensions, coordinates and drawings given as the Floor Plans in this literature are approximate and provided only for the purpose of marketing, illustration, information and general guidance as such drawings are not to scale. All the rooms, sizes, locations, orientations, dimensions, fixtures, fittings, finishes and specifications (including materials for, placement, size of rooms, windows, doors, balcony, furniture's, inbuilt wardrobe etc.) provided in the floor plans may vary as the same have been taken from concept designs prior to the actual development/construction and therefore their accuracy in relation to actual construction cannot be confirmed. Hence, we make no guarantee, warranty or representation as to the accuracy and completeness of the Floor plan information as changes may be made during the development process, without notice. Always refer to latest IFC design available in the sales office for the most accurate representation of all construction details.

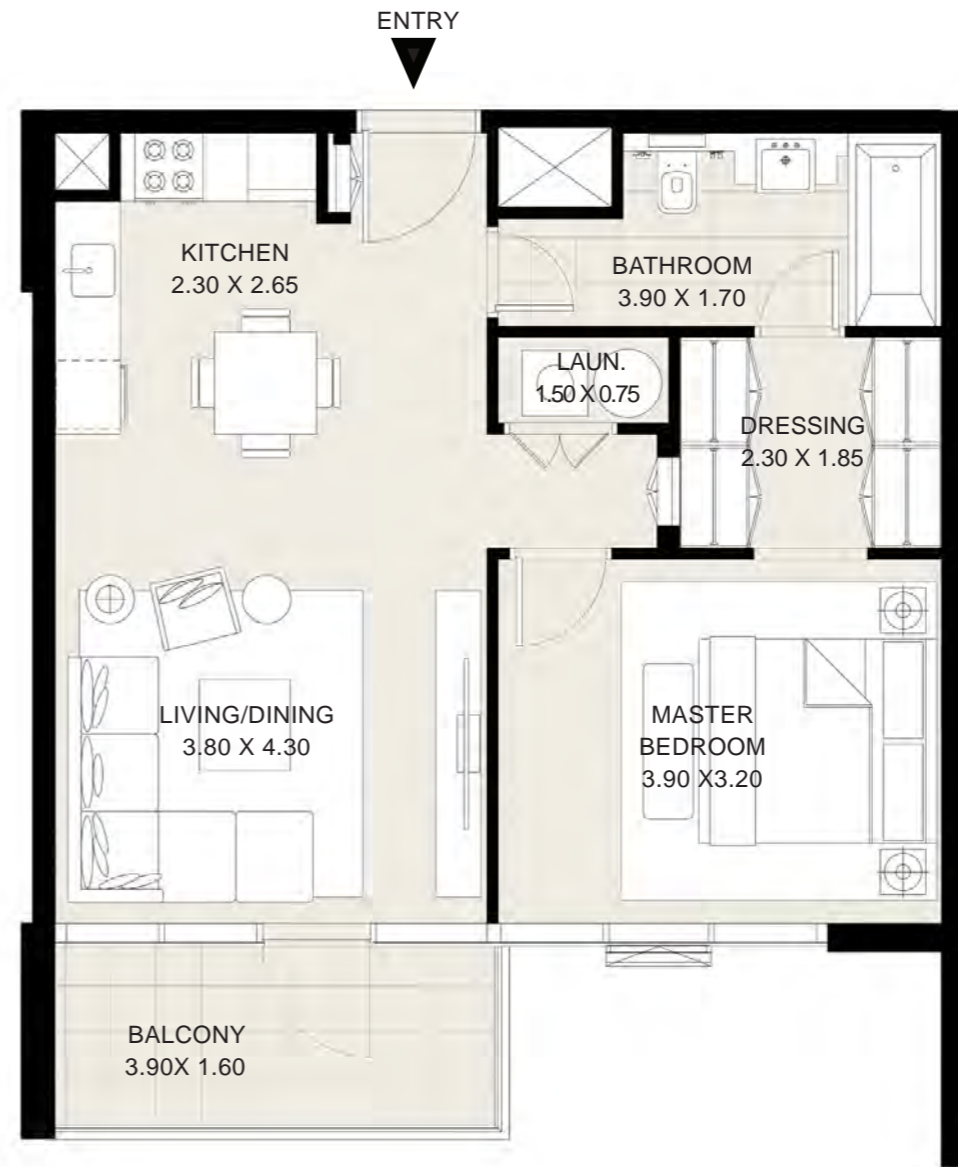
1 BEDROOM

UNIT 401 | 4TH FLOOR

| | |
|---------------|-----------|
| Suite Area: | 612 sq.ft |
| Balcony Area: | 71 sq.ft |
| Total Area: | 683 sq.ft |



G+14
KEY PLAN



DISCLAIMER: All measurements, dimensions, coordinates and drawings given as the Floor Plans in this literature are approximate and provided only for the purpose of marketing, illustration, information and general guidance as such drawings are not to scale. All the rooms, sizes, locations, orientations, dimensions, fixtures, fittings, finishes and specifications (including materials for, placement, size of rooms, windows, doors, balcony, furniture's, inbuilt wardrobe etc.) provided in the floor plans may vary as the same have been taken from concept designs prior to the actual development/construction and therefore their accuracy in relation to actual construction cannot be confirmed. Hence, we make no guarantee, warranty or representation as to the accuracy and completeness of the Floor plan information as changes may be made during the development process, without notice. Always refer to latest IFC design available in the sales office for the most accurate representation of all construction details.

2 BEDROOM



MOHAMMED BIN RASHID
AL MAKTOUM CITY

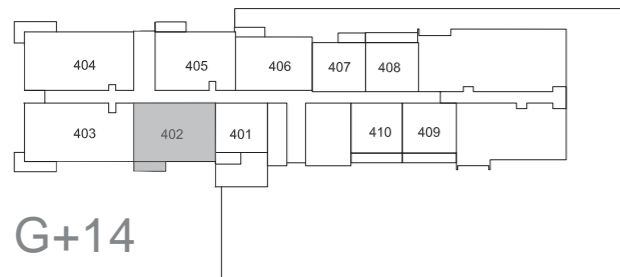
DISTRICT ONE

UNIT 402 | 4TH FLOOR

Suite Area: 1121 sq.ft

Balcony Area: 71 sq.ft

Total Area: 1191 sq.ft



G+14
KEY PLAN



DISCLAIMER: All measurements, dimensions, coordinates and drawings given as the Floor Plans in this literature are approximate and provided only for the purpose of marketing, illustration, information and general guidance as such drawings are not to scale. All the rooms, sizes, locations, orientations, dimensions, fixtures, fittings, finishes and specifications (including materials for, placement, size of rooms, windows, doors, balcony, furniture's, inbuilt wardrobe etc.) provided in the floor plans may vary as the same have been taken from concept designs prior to the actual development/construction and therefore their accuracy in relation to actual construction cannot be confirmed. Hence, we make no guarantee, warranty or representation as to the accuracy and completeness of the Floor plan information as changes may be made during the development process, without notice. Always refer to latest IFC design available in the sales office for the most accurate representation of all construction details.

3 BEDROOM



**MOHAMMED BIN RASHID
AL MAKTOUM CITY**

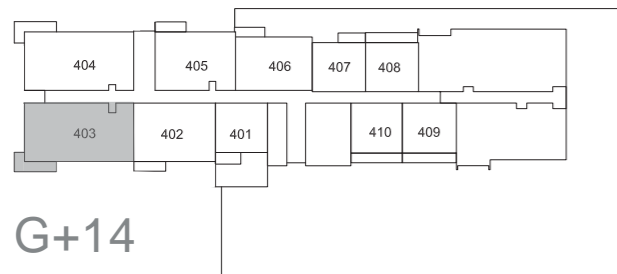
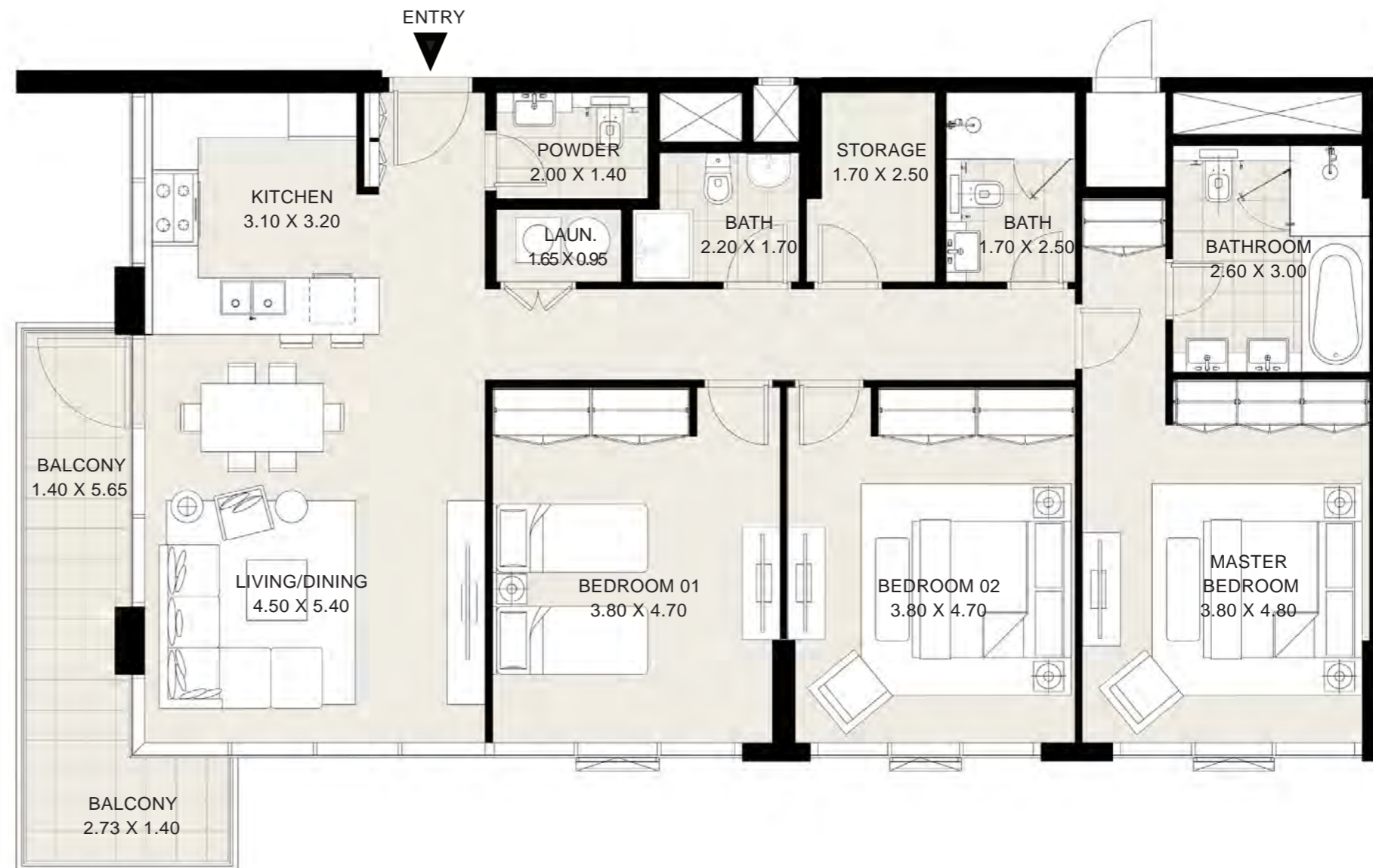
DISTRICT ONE

UNIT 403 | 4TH FLOOR

Suite Area: 1515 sq.ft

Balcony Area: 129 sq.ft

Total Area: 1644 sq.ft



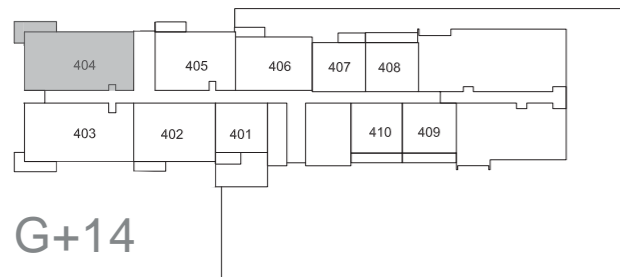
**G+14
KEY PLAN**

DISCLAIMER: All measurements, dimensions, coordinates and drawings given as the Floor Plans in this literature are approximate and provided only for the purpose of marketing, illustration, information and general guidance as such drawings are not to scale. All the rooms, sizes, locations, orientations, dimensions, fixtures, fittings, finishes and specifications (including materials for, placement, size of rooms, windows, doors, balcony, furniture's, inbuilt wardrobe etc.) provided in the floor plans may vary as the same have been taken from concept designs prior to the actual development/construction and therefore their accuracy in relation to actual construction cannot be confirmed. Hence, we make no guarantee, warranty or representation as to the accuracy and completeness of the Floor plan information as changes may be made during the development process, without notice. Always refer to latest IFC design available in the sales office for the most accurate representation of all construction details.

3 BEDROOM

UNIT 404 | 4TH FLOOR

| | |
|---------------|------------|
| Suite Area: | 1531 sq.ft |
| Balcony Area: | 129 sq.ft |
| Total Area: | 1660 sq.ft |



**G+14
KEY PLAN**

DISCLAIMER: All measurements, dimensions, coordinates and drawings are for informational purposes only. They are not intended to be used as a basis for construction. The actual development/construction and therefore their accuracy in relation to actual construction cannot be confirmed. Hence, we make no guarantee, warranty or representation as to the accuracy and completeness of the Floor plan information as changes may be made during the development process, without notice. Always refer to latest IFC design available in the sales office for the most accurate representation of all construction details.

2 BEDROOM



MOHAMMED BIN RASHID
AL MAKTOUM CITY

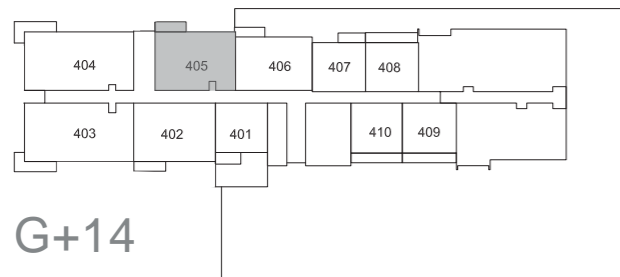
DISTRICT ONE

UNIT 405 | 4TH FLOOR

Suite Area: 1103 sq.ft

Balcony Area: 69 sq.ft

Total Area: 1172 sq.ft



G+14
KEY PLAN



DISCLAIMER: All measurements, dimensions, coordinates and drawings given as the Floor Plans in this literature are approximate and provided only for the purpose of marketing, illustration, information and general guidance as such drawings are not to scale. All the rooms, sizes, locations, orientations, dimensions, fixtures, fittings, finishes and specifications (including materials for, placement, size of rooms, windows, doors, balcony, furniture's, inbuilt wardrobe etc.) provided in the floor plans may vary as the same have been taken from concept designs prior to the actual development/construction and therefore their accuracy in relation to actual construction cannot be confirmed. Hence, we make no guarantee, warranty or representation as to the accuracy and completeness of the Floor plan information as changes may be made during the development process, without notice. Always refer to latest IFC design available in the sales office for the most accurate representation of all construction details.

2 BEDROOM



MOHAMMED BIN RASHID
AL MAKTOUM CITY

DISTRICT ONE

UNIT 406 | 4TH FLOOR

Suite Area: 977 sq.ft

Balcony Area: 68 sq.ft

Total Area: 1045 sq.ft



G+14
KEY PLAN



DISCLAIMER: All measurements, dimensions, coordinates and drawings given as the Floor Plans in this literature are approximate and provided only for the purpose of marketing, illustration, information and general guidance as such drawings are not to scale. All the rooms, sizes, locations, orientations, dimensions, fixtures, fittings, finishes and specifications (including materials for, placement, size of rooms, windows, doors, balcony, furniture's, inbuilt wardrobe etc.) provided in the floor plans may vary as the same have been taken from concept designs prior to the actual development/construction and therefore their accuracy in relation to actual construction cannot be confirmed. Hence, we make no guarantee, warranty or representation as to the accuracy and completeness of the Floor plan information as changes may be made during the development process, without notice. Always refer to latest IFC design available in the sales office for the most accurate representation of all construction details.

1 BEDROOM

UNIT 407 | 4TH FLOOR

| | |
|---------------|-----------|
| Suite Area: | 608 sq.ft |
| Balcony Area: | 60 sq.ft |
| Total Area: | 668 sq.ft |



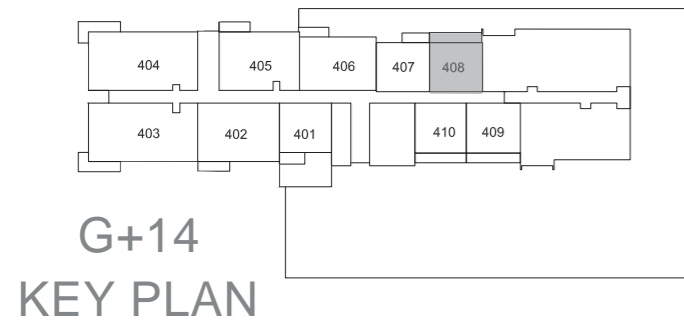
**G+14
KEY PLAN**

DISCLAIMER: All measurements, dimensions, coordinates and drawings given as the Floor Plans in this literature are approximate and provided only for the purpose of marketing, illustration, information and general guidance as such drawings are not to scale. All the rooms, sizes, locations, orientations, dimensions, fixtures, fittings, finishes and specifications (including materials for, placement, size of rooms, windows, doors, balcony, furniture's, inbuilt wardrobe etc.) provided in the floor plans may vary as the same have been taken from concept designs prior to the actual development/construction and therefore their accuracy in relation to actual construction cannot be confirmed. Hence, we make no guarantee, warranty or representation as to the accuracy and completeness of the Floor plan information as changes may be made during the development process, without notice. Always refer to latest IFC design available in the sales office for the most accurate representation of all construction details.

1 BEDROOM

UNIT 408 | 4TH FLOOR

| | |
|---------------|-----------|
| Suite Area: | 607 sq.ft |
| Balcony Area: | 125 sq.ft |
| Total Area: | 732 sq.ft |

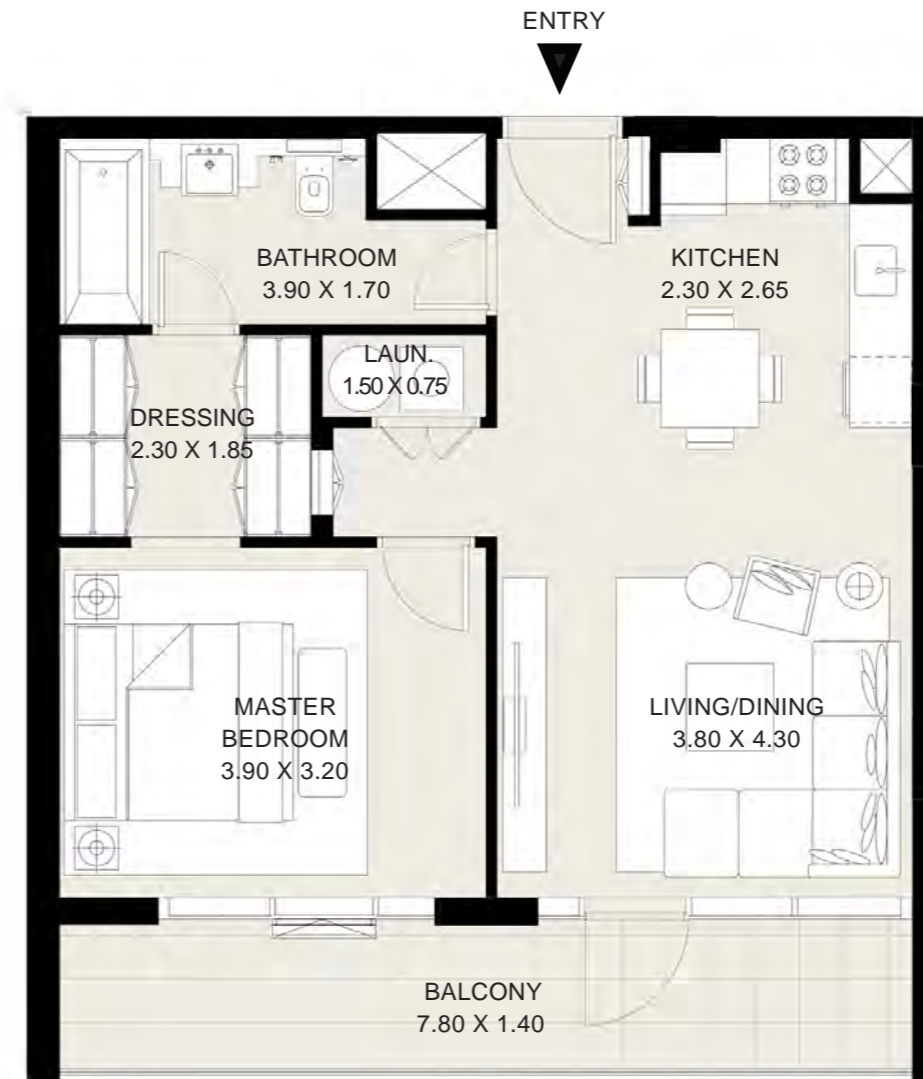
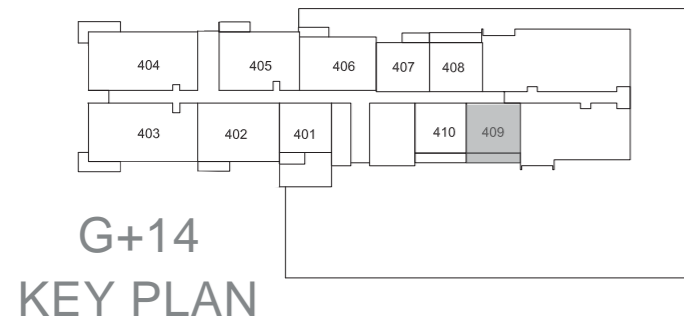


DISCLAIMER: All measurements, dimensions, coordinates and drawings given as the Floor Plans in this literature are approximate and provided only for the purpose of marketing, illustration, information and general guidance as such drawings are not to scale. All the rooms, sizes, locations, orientations, dimensions, fixtures, fittings, finishes and specifications (including materials for, placement, size of rooms, windows, doors, balcony, furniture's, inbuilt wardrobe etc.) provided in the floor plans may vary as the same have been taken from concept designs prior to the actual development/construction and therefore their accuracy in relation to actual construction cannot be confirmed. Hence, we make no guarantee, warranty or representation as to the accuracy and completeness of the Floor plan information as changes may be made during the development process, without notice. Always refer to latest IFC design available in the sales office for the most accurate representation of all construction details.

1 BEDROOM

UNIT 409 | 4TH FLOOR

| | |
|---------------|-----------|
| Suite Area: | 608 sq.ft |
| Balcony Area: | 125 sq.ft |
| Total Area: | 733 sq.ft |



DISCLAIMER: All measurements, dimensions, coordinates and drawings given as the Floor Plans in this literature are approximate and provided only for the purpose of marketing, illustration, information and general guidance as such drawings are not to scale. All the rooms, sizes, locations, orientations, dimensions, fixtures, fittings, finishes and specifications (including materials for, placement, size of rooms, windows, doors, balcony, furniture's, inbuilt wardrobe etc.) provided in the floor plans may vary as the same have been taken from concept designs prior to the actual development/construction and therefore their accuracy in relation to actual construction cannot be confirmed. Hence, we make no guarantee, warranty or representation as to the accuracy and completeness of the Floor plan information as changes may be made during the development process, without notice. Always refer to latest IFC design available in the sales office for the most accurate representation of all construction details.

1 BEDROOM

UNIT 410 | 4TH FLOOR

| | |
|---------------|-----------|
| Suite Area: | 612 sq.ft |
| Balcony Area: | 125 sq.ft |
| Total Area: | 737 sq.ft |



G+14
KEY PLAN



DISCLAIMER: All measurements, dimensions, coordinates and drawings given as the Floor Plans in this literature are approximate and provided only for the purpose of marketing, illustration, information and general guidance as such drawings are not to scale. All the rooms, sizes, locations, orientations, dimensions, fixtures, fittings, finishes and specifications (including materials for, placement, size of rooms, windows, doors, balcony, furniture's, inbuilt wardrobe etc.) provided in the floor plans may vary as the same have been taken from concept designs prior to the actual development/construction and therefore their accuracy in relation to actual construction cannot be confirmed. Hence, we make no guarantee, warranty or representation as to the accuracy and completeness of the Floor plan information as changes may be made during the development process, without notice. Always refer to latest IFC design available in the sales office for the most accurate representation of all construction details.

G+14 Apartments 5th to 14th Floor

1,2 and 3 Bedroom Apartments

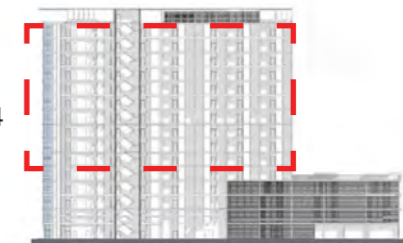


MOHAMMED BIN RASHID
AL MAKTOUM CITY

DISTRICT ONE



05-14



Key Section

DISCLAIMER: All measurements, dimensions, coordinates and drawings given as the Floor Plans in this literature are approximate and provided only for the purpose of marketing, illustration, information and general guidance as such drawings are not to scale. All the rooms, sizes, locations, orientations, dimensions, fixtures, fittings, finishes and specifications (including materials for, placement, size of rooms, windows, doors, balcony, furniture's, inbuilt wardrobe etc.) provided in the floor plans may vary as the same have been taken from concept designs prior to the actual development/construction and therefore their accuracy in relation to actual construction cannot be confirmed. Hence, we make no guarantee, warranty or representation as to the accuracy and completeness of the Floor plan information as changes may be made during the development process, without notice. Always refer to latest IFC design available in the sales office for the most accurate representation of all construction details.

1 BEDROOM

UNIT 01 | 5TH to 14TH FLOORS

| | |
|---------------|-----------|
| Suite Area: | 612 sq.ft |
| Balcony Area: | 71 sq.ft |
| Total Area: | 683 sq.ft |



G+14 KEY PLAN



DISCLAIMER: All measurements, dimensions, coordinates and drawings given as the Floor Plans in this literature are approximate and provided only for the purpose of marketing, illustration, information and general guidance as such drawings are not to scale. All the rooms, sizes, locations, orientations, dimensions, fixtures, fittings, finishes and specifications (including materials for, placement, size of rooms, windows, doors, balcony, furniture's, inbuilt wardrobe etc.) provided in the floor plans may vary as the same have been taken from concept designs prior to the actual development/construction and therefore their accuracy in relation to actual construction cannot be confirmed. Hence, we make no guarantee, warranty or representation as to the accuracy and completeness of the Floor plan information as changes may be made during the development process, without notice. Always refer to latest IFC design available in the sales office for the most accurate representation of all construction details.

2 BEDROOM



MOHAMMED BIN RASHID
AL MAKTOUM CITY

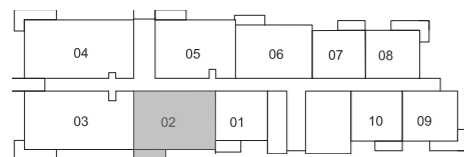
DISTRICT ONE

UNIT 02 | 5TH to 14TH FLOORS

Suite Area: 1108 sq.ft

Balcony Area: 71 sq.ft

Total Area: 1179 sq.ft



G+14

KEY PLAN



DISCLAIMER: All measurements, dimensions, coordinates and drawings given as the Floor Plans in this literature are approximate and provided only for the purpose of marketing, illustration, information and general guidance as such drawings are not to scale. All the rooms, sizes, locations, orientations, dimensions, fixtures, fittings, finishes and specifications (including materials for, placement, size of rooms, windows, doors, balcony, furniture's, inbuilt wardrobe etc.) provided in the floor plans may vary as the same have been taken from concept designs prior to the actual development/construction and therefore their accuracy in relation to actual construction cannot be confirmed. Hence, we make no guarantee, warranty or representation as to the accuracy and completeness of the Floor plan information as changes may be made during the development process, without notice. Always refer to latest IFC design available in the sales office for the most accurate representation of all construction details.

3 BEDROOM



**MOHAMMED BIN RASHID
AL MAKTOUM CITY**

DISTRICT ONE

UNIT 03 | 5TH to 14TH FLOORS

Suite Area: 1516 sq.ft

Balcony Area: 129 sq.ft

Total Area: 1645 sq.ft



G+14

KEY PLAN

DISCLAIMER: All measurements, dimensions, coordinates and drawings given as the Floor Plans in this literature are approximate and provided only for the purpose of marketing, illustration, information and general guidance as such drawings are not to scale. All the rooms, sizes, locations, orientations, dimensions, fixtures, fittings, finishes and specifications (including materials for, placement, size of rooms, windows, doors, balcony, furniture's, inbuilt wardrobe etc.) provided in the floor plans may vary as the same have been taken from concept designs prior to the actual development/construction and therefore their accuracy in relation to actual construction cannot be confirmed. Hence, we make no guarantee, warranty or representation as to the accuracy and completeness of the Floor plan information as changes may be made during the development process, without notice. Always refer to latest IFC design available in the sales office for the most accurate representation of all construction details.

3 BEDROOM

UNIT 04 | 5TH to 14TH FLOORS

| | |
|---------------|------------|
| Suite Area: | 1531 sq.ft |
| Balcony Area: | 129 sq.ft |
| Total Area: | 1660 sq.ft |



**G+14
KEY PLAN**

DISCLAIMER: All measurements, dimensions, coordinates and drawings given as the Floor Plans in this literature are approximate and provided only for the purpose of marketing, illustration, information and general guidance as such drawings are not to scale. All the rooms, sizes, locations, orientations, dimensions, fixtures, fittings, finishes and specifications (including materials for, placement, size of rooms, windows, doors, balcony, furniture's, inbuilt wardrobe etc.) provided in the floor plans may vary as the same have been taken from concept designs prior to the actual development/construction and therefore their accuracy in relation to actual construction cannot be confirmed. Hence, we make no guarantee, warranty or representation as to the accuracy and completeness of the Floor plan information as changes may be made during the development process, without notice. Always refer to latest IFC design available in the sales office for the most accurate representation of all construction details.

2 BEDROOM



MOHAMMED BIN RASHID
AL MAKTOUM CITY

DISTRICT ONE

UNIT 05 | 5TH to 14TH FLOORS

Suite Area: 1104 sq.ft

Balcony Area: 69 sq.ft

Total Area: 1173 sq.ft



G+14 KEY PLAN



DISCLAIMER: All measurements, dimensions, coordinates and drawings given as the Floor Plans in this literature are approximate and provided only for the purpose of marketing, illustration, information and general guidance as such drawings are not to scale. All the rooms, sizes, locations, orientations, dimensions, fixtures, fittings, finishes and specifications (including materials for, placement, size of rooms, windows, doors, balcony, furniture's, inbuilt wardrobe etc.) provided in the floor plans may vary as the same have been taken from concept designs prior to the actual development/construction and therefore their accuracy in relation to actual construction cannot be confirmed. Hence, we make no guarantee, warranty or representation as to the accuracy and completeness of the Floor plan information as changes may be made during the development process, without notice. Always refer to latest IFC design available in the sales office for the most accurate representation of all construction details.

2 BEDROOM

UNIT 06 | 5TH to 14TH FLOORS

| | |
|---------------|------------|
| Suite Area: | 977 sq.ft |
| Balcony Area: | 68 sq.ft |
| Total Area: | 1045 sq.ft |



G+14 KEY PLAN

DISCLAIMER: All measurements, dimensions, coordinates and drawings given as the Floor Plans in this literature are approximate and provided only for the purpose of marketing, illustration, information and general guidance as such drawings are not to scale. All the rooms, sizes, locations, orientations, dimensions, fixtures, fittings, finishes and specifications (including materials for, placement, size of rooms, windows, doors, balcony, furniture's, inbuilt wardrobe etc.) provided in the floor plans may vary as the same have been taken from concept designs prior to the actual development/construction and therefore their accuracy in relation to actual construction cannot be confirmed. Hence, we make no guarantee, warranty or representation as to the accuracy and completeness of the Floor plan information as changes may be made during the development process, without notice. Always refer to latest IFC design available in the sales office for the most accurate representation of all construction details.

1 BEDROOM

UNIT 07 | 5TH to 14TH FLOORS

| | |
|---------------|-----------|
| Suite Area: | 607 sq.ft |
| Balcony Area: | 61 sq.ft |
| Total Area: | 668 sq.ft |



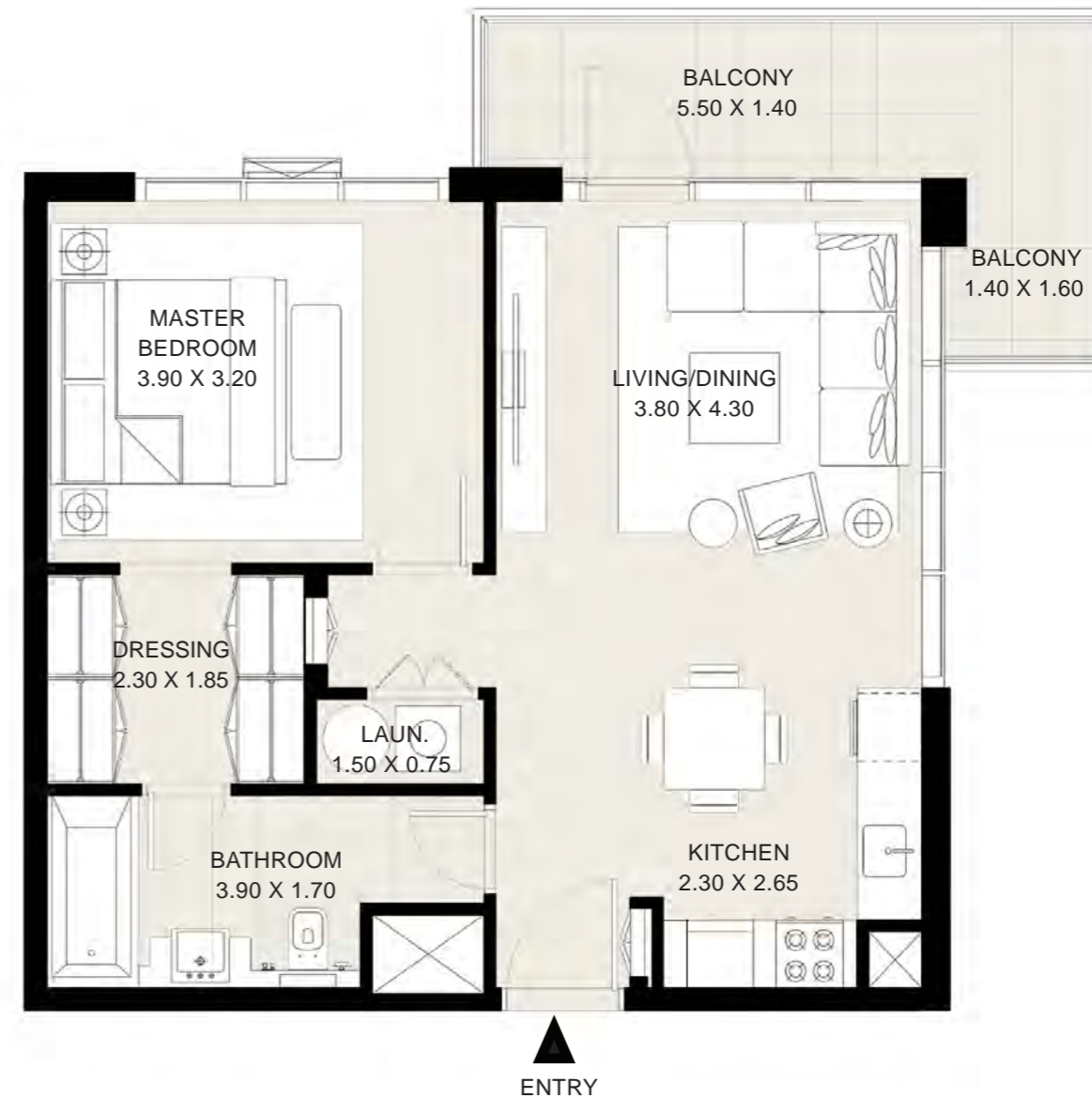
G+14
KEY PLAN

DISCLAIMER: All measurements, dimensions, coordinates and drawings given as the Floor Plans in this literature are approximate and provided only for the purpose of marketing, illustration, information and general guidance as such drawings are not to scale. All the rooms, sizes, locations, orientations, dimensions, fixtures, fittings, finishes and specifications (including materials for, placement, size of rooms, windows, doors, balcony, furniture's, inbuilt wardrobe etc.) provided in the floor plans may vary as the same have been taken from concept designs prior to the actual development/construction and therefore their accuracy in relation to actual construction cannot be confirmed. Hence, we make no guarantee, warranty or representation as to the accuracy and completeness of the Floor plan information as changes may be made during the development process, without notice. Always refer to latest IFC design available in the sales office for the most accurate representation of all construction details.

1 BEDROOM

UNIT 08 | 5TH to 14TH FLOORS

| | |
|---------------|-----------|
| Suite Area: | 611 sq.ft |
| Balcony Area: | 109 sq.ft |
| Total Area: | 720 sq.ft |



G+14
KEY PLAN

DISCLAIMER: All measurements, dimensions, coordinates and drawings given as the Floor Plans in this literature are approximate and provided only for the purpose of marketing, illustration, information and general guidance as such drawings are not to scale. All the rooms, sizes, locations, orientations, dimensions, fixtures, fittings, finishes and specifications (including materials for, placement, size of rooms, windows, doors, balcony, furniture's, inbuilt wardrobe etc.) provided in the floor plans may vary as the same have been taken from concept designs prior to the actual development/construction and therefore their accuracy in relation to actual construction cannot be confirmed. Hence, we make no guarantee, warranty or representation as to the accuracy and completeness of the Floor plan information as changes may be made during the development process, without notice. Always refer to latest IFC design available in the sales office for the most accurate representation of all construction details.

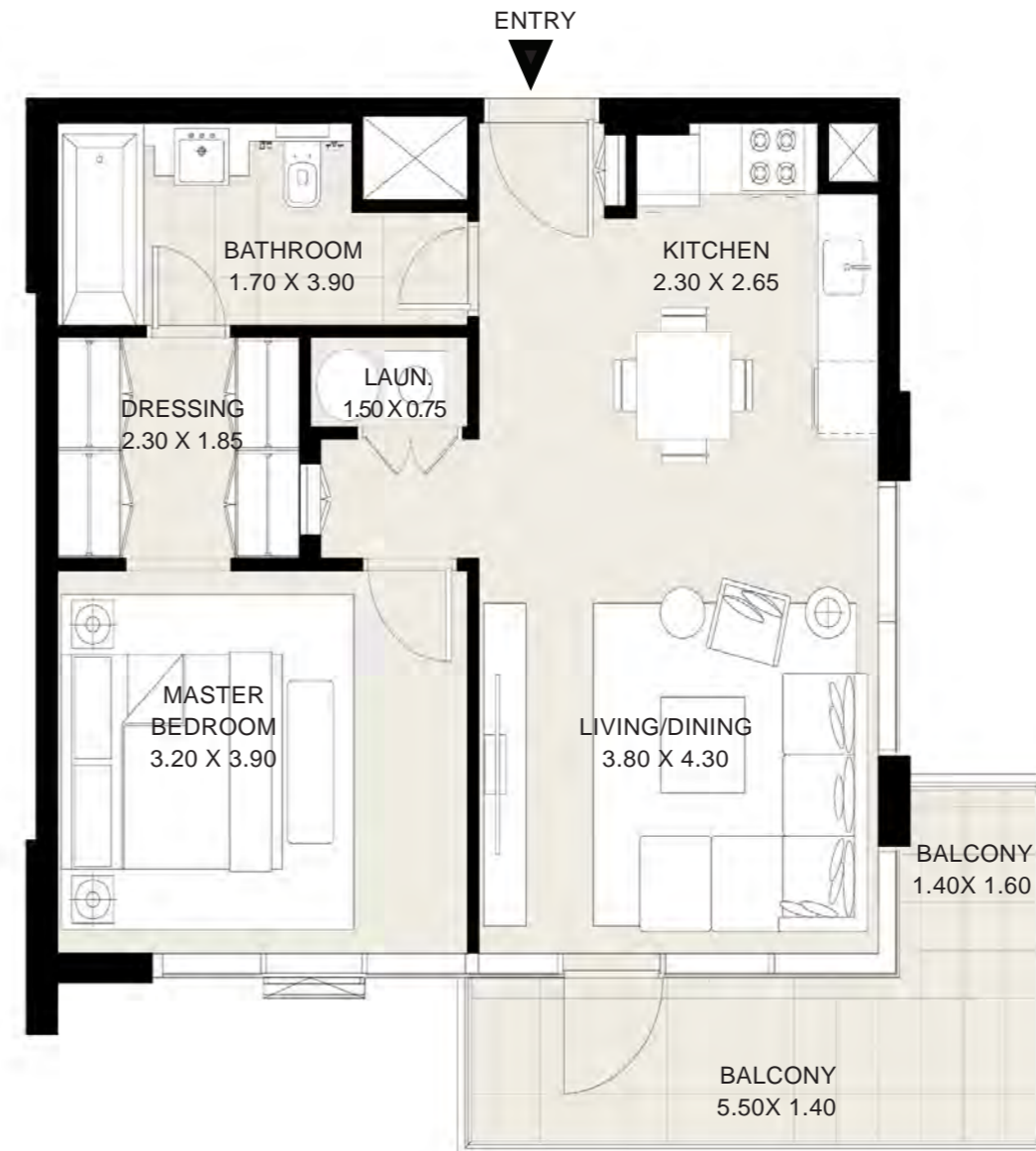
1 BEDROOM

UNIT 09| 5TH to 14TH FLOORS

| | |
|---------------|-----------|
| Suite Area: | 611 sq.ft |
| Balcony Area: | 109 sq.ft |
| Total Area: | 720 sq.ft |



G+14 KEY PLAN



DISCLAIMER: All measurements, dimensions, coordinates and drawings given as the Floor Plans in this literature are approximate and provided only for the purpose of marketing, illustration, information and general guidance as such drawings are not to scale. All the rooms, sizes, locations, orientations, dimensions, fixtures, fittings, finishes and specifications (including materials for, placement, size of rooms, windows, doors, balcony, furniture's, inbuilt wardrobe etc.) provided in the floor plans may vary as the same have been taken from concept designs prior to the actual development/construction and therefore their accuracy in relation to actual construction cannot be confirmed. Hence, we make no guarantee, warranty or representation as to the accuracy and completeness of the Floor plan information as changes may be made during the development process, without notice. Always refer to latest IFC design available in the sales office for the most accurate representation of all construction details.

1 BEDROOM

UNIT 10 | 5TH to 14TH FLOORS

| | |
|---------------|-----------|
| Suite Area: | 612 sq.ft |
| Balcony Area: | 61 sq.ft |
| Total Area: | 673 sq.ft |



G+14 KEY PLAN



DISCLAIMER: All measurements, dimensions, coordinates and drawings given as the Floor Plans in this literature are approximate and provided only for the purpose of marketing, illustration, information and general guidance as such drawings are not to scale. All the rooms, sizes, locations, orientations, dimensions, fixtures, fittings, finishes and specifications (including materials for, placement, size of rooms, windows, doors, balcony, furniture's, inbuilt wardrobe etc.) provided in the floor plans may vary as the same have been taken from concept designs prior to the actual development/construction and therefore their accuracy in relation to actual construction cannot be confirmed. Hence, we make no guarantee, warranty or representation as to the accuracy and completeness of the Floor plan information as changes may be made during the development process, without notice. Always refer to latest IFC design available in the sales office for the most accurate representation of all construction details.



**MOHAMMED BIN RASHID
AL MAKTOUM CITY**

DISTRICT ONE

WITHIN UAE: 800 111 111 | OUTSIDE UAE: +971 4 403 0000 | EMAIL: INFO@DISTRICT1.COM | WWW.DISTRICT1.COM